






DOVE MEWS

South Kensington, SW5



# A CHARMING THREE-BEDROOM MEWS HOUSE WITH A TERRACE

This well-presented mews house on Dove Mews offers approximately 1,128 sq ft of accommodation arranged over two floors, featuring bright interiors, balanced proportions and a balcony.

			EPC
3	2	1	TBC

Local Authority: Royal Borough of Kensington and Chelsea

Council Tax band: F

Tenure: Freehold

**Guide Price: £1,850,000**



## A MEWS HOUSE WITH OPEN PLAN LIVING

The ground floor is particularly wide and is centred around a superb open-plan reception and kitchen extending to over 24 ft, with windows on both sides flooding the space with natural light.

The well-equipped kitchen offers ample storage and workspace, while the adjoining dining and seating areas provide a comfortable and flexible layout for modern living. A utility area is discreetly positioned to the rear.







## LOCATED IN THE HEART OF SOUTH KENSINGTON

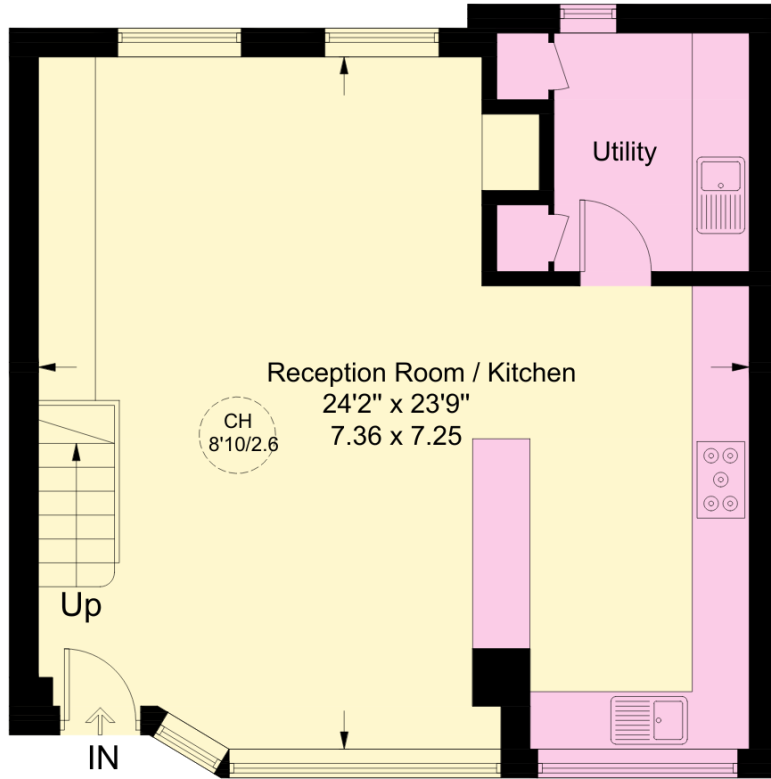
Upstairs, the principal bedroom features fitted wardrobes and a well-appointed en suite shower room. Two further bedrooms, both with fitted wardrobes, share a family bathroom and offer excellent versatility for guests, family, or home working. The design maximises space and light, with every room carefully considered for practicality and comfort. The second bedroom gives access to the balcony.

With its inviting proportions, bright interiors, and sought-after South Kensington location, this mews house offers an ideal balance of character and convenience.

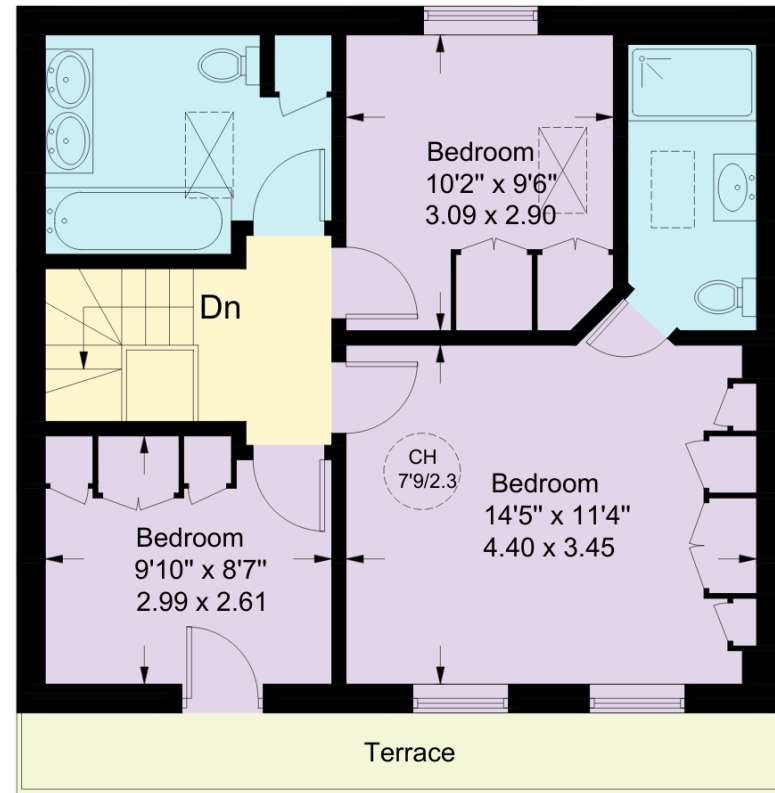


Dove Mews is a quiet, cobbled street tucked away between Cromwell Road and Harrington Gardens, ideally located for the restaurants, shops, and cafés of South Kensington and Gloucester Road. The area offers a vibrant mix of everyday amenities and cultural landmarks, including the Natural History Museum, V&A, and Hyde Park, all within easy reach. Transport connections are excellent, with Gloucester Road and South Kensington underground stations nearby, providing District, Circle, and Piccadilly line services for fast access across London, Heathrow Airport, and the West End.





**Ground Floor**



**First Floor**

Dove Mews, SW5  
Approximate Gross Internal Area = 104.8 sq m / 1,128 sq ft

This plan is for layout guidance only. Not drawn to scale unless stated. Windows and door openings are approximate. Whilst every care is taken in the preparation of this plan, please check all dimensions, shapes and compass bearings before making any decisions reliant upon them. (ID767266)

Claire Mengham

020 3978 2462

claire.mengham@knightfrank.com

**Knight Frank Chelsea and South Kensington**

352a Kings Road

SW3 5UU

**knightfrank.co.uk**

Your partners in property

---

1. Particulars: These particulars are not an offer or contract, nor part of one. You should not rely on statements given by Knight Frank in the particulars, by word of mouth or in writing ("information") as being factually accurate about the property, its condition or its value. Neither Knight Frank nor any joint agent has any authority to make any representations about the property, and accordingly any information given is entirely without responsibility on the part of Knight Frank. 2. Material Information: Please note that the material information is provided to Knight Frank by third parties and is provided here as a guide only. While Knight Frank has taken steps to verify this information, we advise you to confirm the details of any such material information prior to any offer being submitted. If we are informed of changes to this information by the seller or another third party, we will use reasonable endeavours to update this as soon as practical. 3. Photos, Videos etc: The photographs, property videos and virtual viewings etc. show only certain parts of the property as they appeared at the time they were taken. Areas, measurements and distances given are approximate only. 4. Regulations etc: Any reference to alterations to, or use of, any part of the property does not mean that any necessary planning, building regulations or other consent has been obtained. A buyer must find out by inspection or in other ways that these matters have been properly dealt with and that all information is correct. 5. Fixtures and fittings: A list of the fitted carpets, curtains, light fittings and other items fixed to the property which are included in the sale (or may be available by separate negotiation) will be provided by the Seller's Solicitors. 6. VAT: The VAT position relating to the property may change without notice. 7. To find out how we process Personal Data, please refer to our Group Privacy Statement and other notices at <https://www.knightfrank.com/legals/privacy-statement>.

Particulars dated October 2025. Photographs and videos dated October 2025. All information is correct at the time of going to print. Knight Frank is the trading name of Knight Frank LLP. Knight Frank LLP is a limited liability partnership registered in England and Wales with registered number OC305934. Our registered office is at 55 Baker Street, London W1U 8AN. We use the term 'partner' to refer to a member of Knight Frank LLP, or an employee or consultant. A list of members names of Knight Frank LLP may be inspected at our registered office. If you do not want us to contact you further about our services then please contact us by either calling 020 3544 0692, email to [marketing.help@knightfrank.com](mailto:marketing.help@knightfrank.com) or post to our UK Residential Marketing Manager at our registered office (above) providing your name and address.

