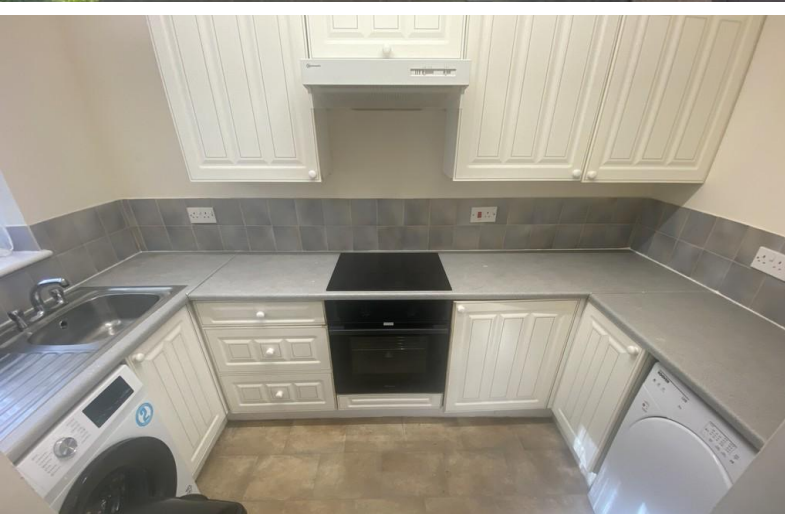


**TO LET**



## **Briarswood, Upper Shirley**

**1 Bedroom, 1 Bathroom, Apartment**

**£825 pcm**



## Briarswood, Upper Shirley

Apartment,  
1 bedroom, 1 bathroom

£825 pcm

Date available: Available Now

Deposit: £951.92

Unfurnished

Council Tax band: B

- One bedroom ground floor Apartment
- Neutral decor throughout
- White goods included
- Electric Heating
- Available 5th May 2026
- Allocated parking
- Close to shops and amenities

One bedroom property available from 5th May 2026 in popular location, includes allocated Parking

Deposit £951.92

EPC D

Southampton Tax band B

Score	Energy rating	Current	Potential
92+	A		
81-91	B		
69-80	C		75 C
55-68	D	66 D	
39-54	E		
21-38	F		
1-20	G		



---

**Martin & Co Southampton City** **02380 988881**  
46 London Road • • Southampton • SO15 2AH  
T: 02380 988881 • E: southamptoncity@martinco.com <http://www.martinco.com>



**Accuracy:** References to the Tenure of a Property are based on information supplied by the Seller. The Agent has not had sight of the title documents. A Buyer is advised to obtain verification from their Solicitor. Items shown in photographs including but not limited to carpets, fixtures and fittings are not included unless specifically mentioned within the sales particulars. They may however be available by separate negotiation. Buyers must check the availability of any property and make an appointment to view before embarking on any journey to see a property. No person in the employment of the agent has any authority to make any representation about the property, and accordingly any information given is entirely without responsibility on the part of the agents, sellers(s) or lessors(s). Any property particulars are not an offer or contract, nor for part of one. **Sonic / laser Tape:** Measurements taken using a sonic / laser tape measure may be subject to a small margin of error. **All Measurements:** All Measurements are Approximate. **Services Not tested:** The Agent has not tested any apparatus, equipment, fixtures and fittings or services and so cannot verify that they are in working order or fit for the purpose. A Buyer is advised to obtain verification from their Solicitor or Surveyor.