



ADBROKE ROAD



FLAT 4 PRINCESS HOUSE, 45 LADBROKE ROAD, REDHILL, SURREY, RH1 1JQ

**£220,000
LEASEHOLD**

One bedroom, ground floor apartment in one of the most convenient locations possible for Redhill town and station.

If you commute to work, and wish for easy access to the shops and entertainment available in the town centre, then this ground floor apartment, complete with allocated parking is a perfect fit.

The property has a secure communal hallway, with a telephone entry system. Through the private door there is an entrance hall with built in storage, a fitted kitchen with a window to the rear, separate lounge/dining room, double bedroom with fitted wardrobes and a bathroom.

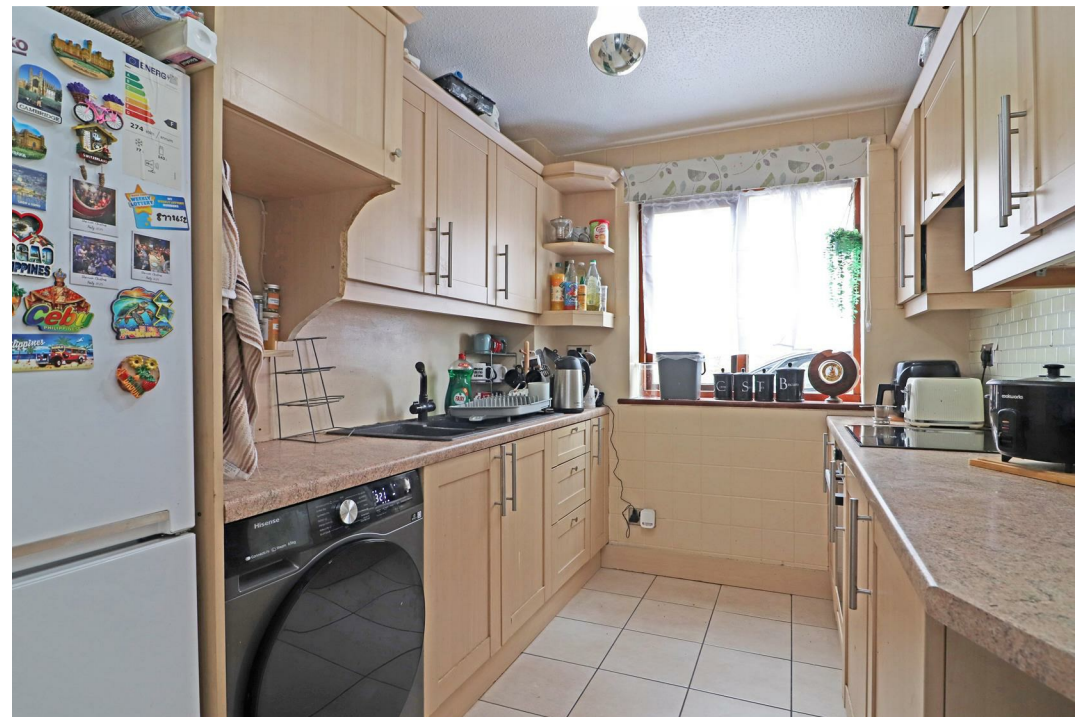
To the rear there is a residents car park, where you have an allocated parking space. In addition, this well run building, constructed by local builders Hystar, has very reasonable outgoings (£800 per year plus £200 ground rent) and also the benefit of a 149 year lease.

Redhill Memorial Park is right next door to the property, where you will find a cafe and tennis courts, as well as attractive green space.

Mainline train services are only moments away, offering direct trains to central London in as little as 29 minutes, with additional links to Gatwick, Reading, Guildford and Tonbridge.

The town centre itself now offers a great range of high street shops, as well as a shopping centre, multi screen cinema and leisure complex, weekly local market and some excellent restaurants.

- IDEAL FIRST PURCHASE
- DOUBLE BEDROOM
- LOW SERVICE CHARGE
- EASY STATION ACCESS
- COUNCIL TAX BAND: B
- GROUND FLOOR APARTMENT
- SEPARATE KITCHEN
- ALLOCATED PARKING
- NEXT TO REDHILL PARK
- EPC RATING: C





ROOM DIMENSIONS:

ENTRANCE HALL

8'1 x 6'4 (2.46m x 1.93m)

LOUNGE

13'10 x 12'7 (4.22m x 3.84m)

KITCHEN

9'6 x 7'6 (2.90m x 2.29m)

DOUBLE BEDROOM

11'0 x 9'10 (3.35m x 3.00m)

BATHROOM

6'11 x 6'3 (2.11m x 1.91m)

ELECTRIC HEATING

WOOD AND SECONDARY GLAZED WINDOWS

ALLOCATED PARKING

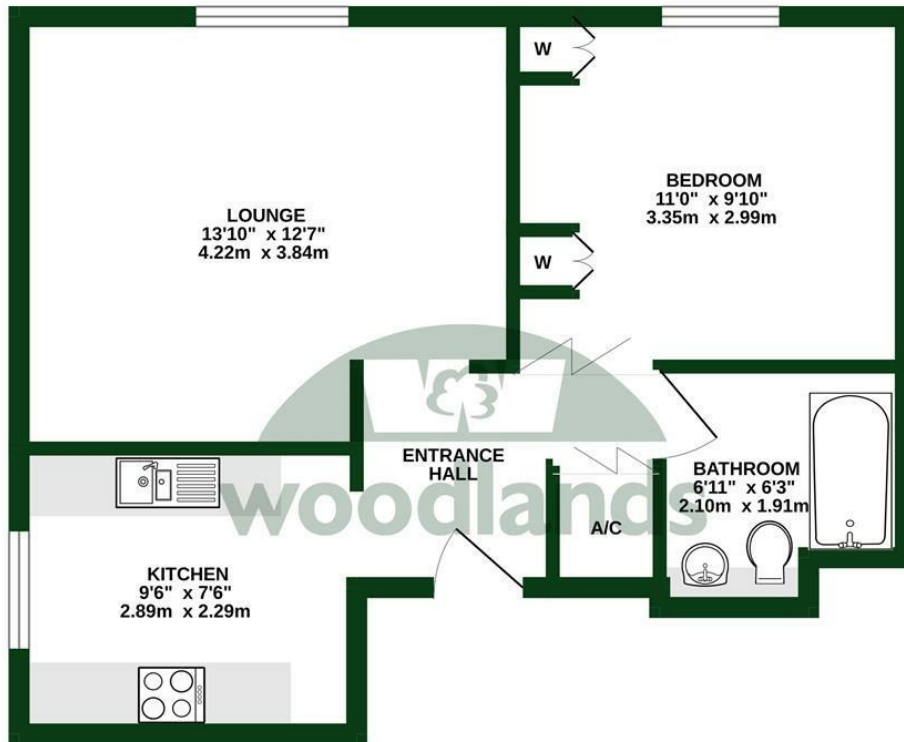
YEARS REMAINING ON LEASE: 149

GROUND RENT: £200 PER ANNUM

SERVICE CHARGES: £800 PER ANNUM



GROUND FLOOR
437 sq.ft. (40.6 sq.m.) approx.



TOTAL FLOOR AREA : 437 sq.ft. (40.6 sq.m.) approx.

Whilst every attempt has been made to ensure the accuracy of the floorplan contained here, measurements of doors, windows, rooms and any other items are approximate and no responsibility is taken for any error, omission or mis-statement. This plan is for illustrative purposes only and should be used as such by any prospective purchaser. The services, systems and appliances shown have not been tested and no guarantee as to their operability or efficiency can be given.
Made with Metropix ©2025



Energy Efficiency Rating		
	Current	Potential
Very energy efficient - lower running costs		
(92 plus) A		
(81-91) B		
(69-80) C	69	77
(55-68) D		
(39-54) E		
(21-38) F		
(1-20) G		
Not energy efficient - higher running costs		
England & Wales	EU Directive 2002/91/EC	

To view this property please call 01737 771777

www.woodlands-estates.co.uk

These particulars are set out as a general outline for the guidance of intending purchasers or lessees and do not constitute any part of an offer or contract. No person in the employment of the above named agents has any authority to make or give any representation or warranty whatsoever in relation to this property. If there is any point which is of particular interest, please contact our office and we will be pleased to check the information. The mention of any appliances and/or services does not imply they are in full and efficient working order.