

**LONDON  
VICTORIA  
GROUPS** 



## **Pink Mews, 1-6 the Dyers Building**

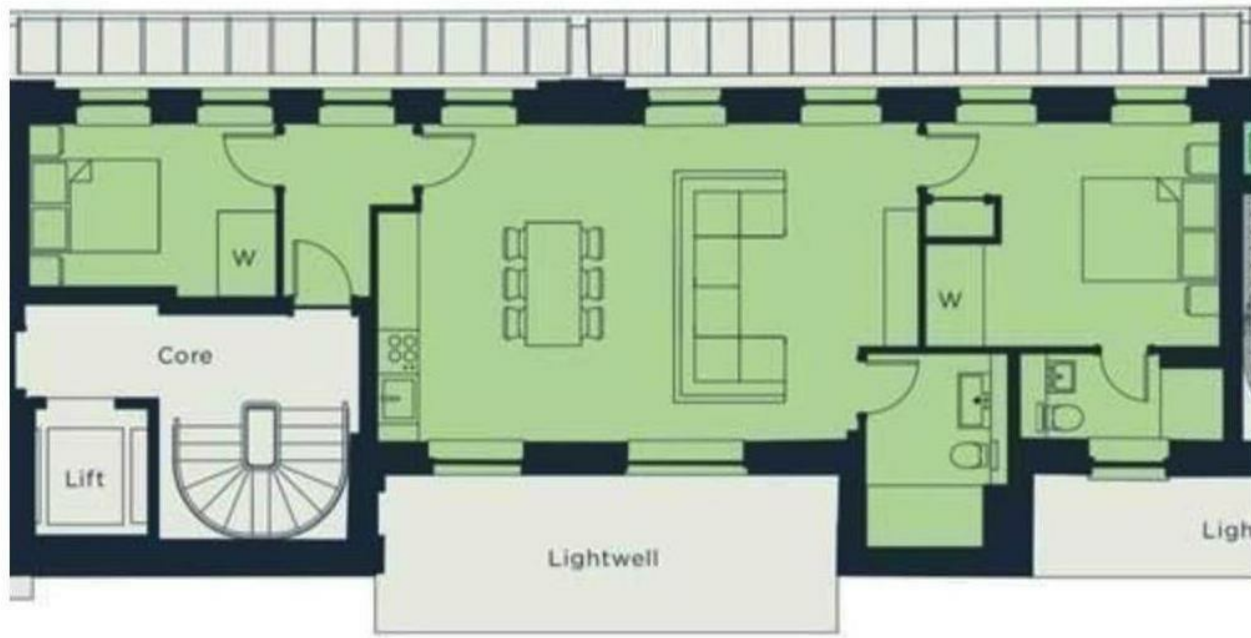
, London EC1N 2JT

- Two-bedroom, two-bathroom apartment
- Perfectly positioned between Farringdon, Chancery Lane, and Holborn
- Concierge
- CTB-F
- Bright open-plan reception and dining area
- Secure entry system
- EPC-B

**£4,000 Per Month**



Local Authority **City Of London**  
Council Tax Band **F**  
EPC Rating **B**



**London Office Office**

Spaces Victoria, 25 Wilton Road, Pimlico,  
London, SW1V 1LW

**Contact**

020 3084 3094  
XL@londonvictoriagroups.co.uk  
www.londonvictoriagroups.co.uk

Agents Note: Whilst every care has been taken to prepare these particulars, they are for guidance purposes only. All measurements are approximate and for general guidance purposes only and whilst every care has been taken to ensure accuracy, they should not be relied upon and potential buyers/tenants are advised to recheck the measurements.