



Kestrel House

St George Wharf, Nine Elms, SW8 2AZ

£745 Per Week

This is a well presented two double bedroom apartment situated on the Fifth Floor of Kestrel House by the riverside, set within the sought after 'St George Wharf' residential development.

This fine property comprises of:- Entrance hallway with good storage, stylish and spacious living room with dining area and semi open plan fitted kitchen, with sliding patio doors leading out onto a wonderful private terrace with uninterrupted river views, two good sized bedrooms (master with en-suite shower/wc), second family bathroom. The property also benefits from having wooden flooring throughout, communal gardens, 24 hour concierge, on-site facilities include: Riverside bars and restaurants, 24 hour Gym (not included in rent), underground car park (payable separately). Underground and overground stations are with minutes walk away and many bus connection's are right on your doorstep. The property is offered furnished and will be available in end of March for long let only. Suitable for a small family and or 2 sharers. Rent only with no Bills included.

- Two Double Bedrooms
- Two Bathrooms
- Large Balcony
- With River view
- Wooden Flooring
- Fifth Floor
- Lifts and Concierge

Viewing

Please contact our Messila Residential Office on 020 7586 6699 if you wish to arrange a viewing appointment for this property or require further information.



2



2

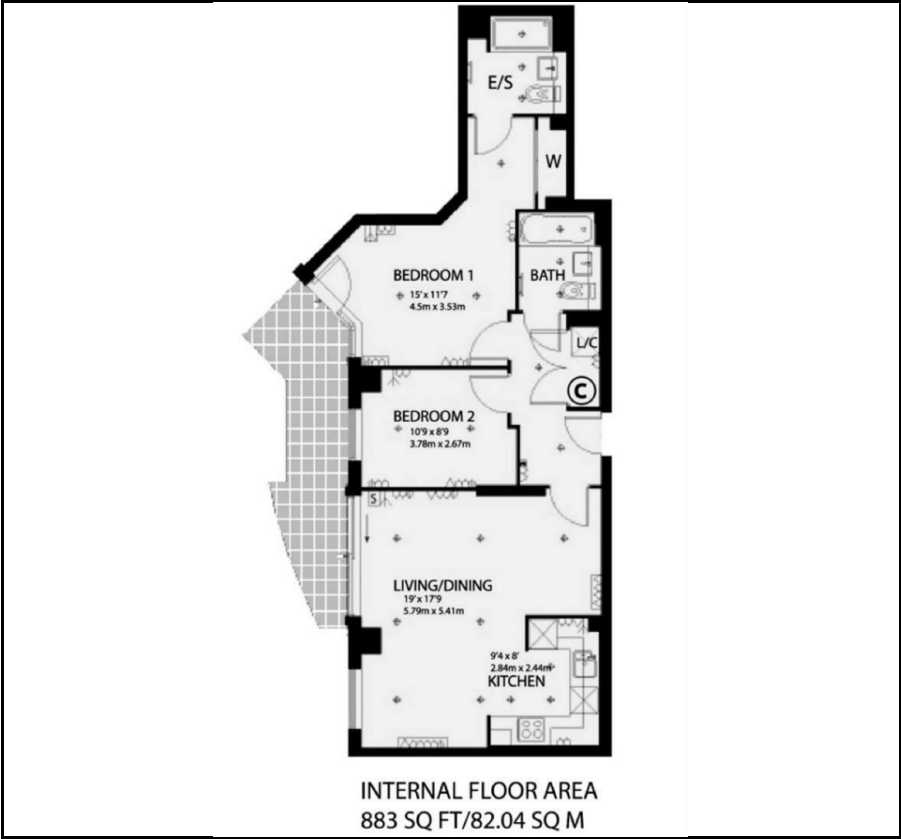


1

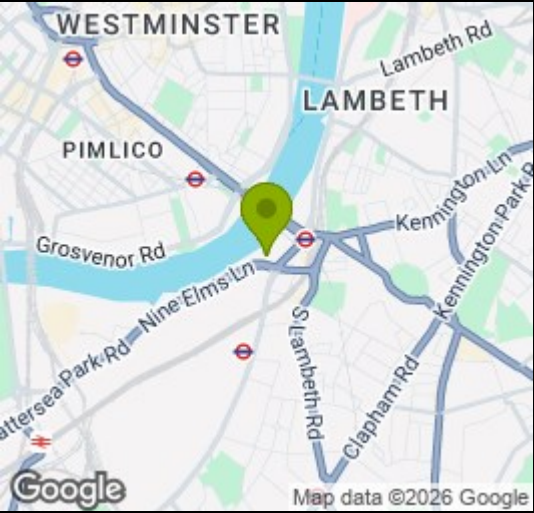


B

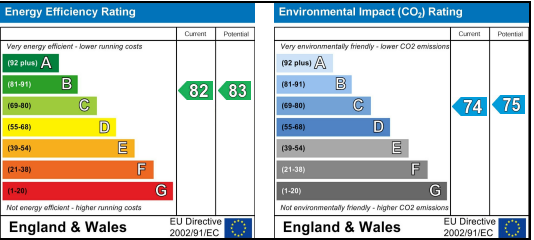
Floor Plan



Area Map



Energy Efficiency Graph



These particulars, whilst believed to be accurate are set out as a general outline only for guidance and do not constitute any part of an offer or contract. Intending purchasers should not rely on them as statements of representation of fact, but must satisfy themselves by inspection or otherwise as to their accuracy. No person in this firms employment has the authority to make or give any representation or warranty in respect of the property.