

## Yelverton Road, SW11

£3,500 Per calendar month

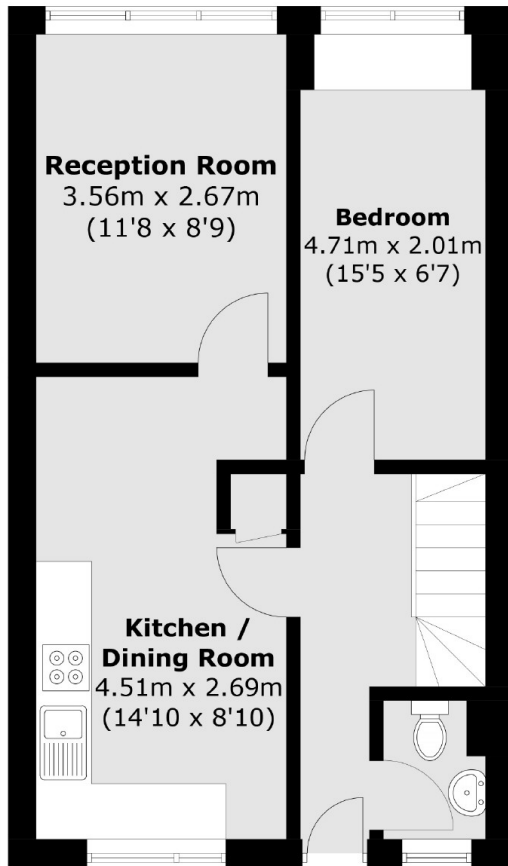
A four double bedroom, split level flat in this purpose built development close to Clapham Junction with access to all the local shops, bars and restaurants.

Badric Court is located within half a mile of Clapham Junction station and with easy access to Wandsworth.

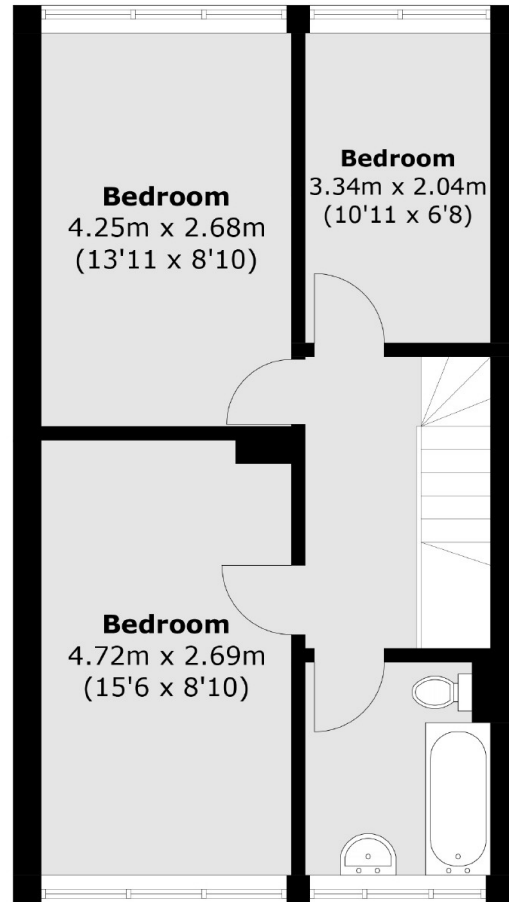
### Features

Four Double Bedrooms  
Well Presented Throughout  
Secure Entry System  
Moments From Transport  
Perfect For Sharers  
Battersea Park

# Yelverton Road, London, SW11



**First Floor**



**Second Floor**

Total area (approx.): 86.4 sq. m (930.0 sq. ft)