



Guide Price
£325,000

Freehold

4x  2x  2x 

**Larkfield Avenue,
Gillingham, Kent, ME7**

OVER 60?

Secure this property
for up to **59% less!**

Wards
Helping you move forwards



Main features

- **Extended 1930's mid terraced house making an ideal family home**
- **Family bathroom and en-suite**
- **Gas central heating and double glazing**
- **Some updating required**
- **Situated within walking distance of Gillingham High Street and train station**

Accommodation

GROUND FLOOR

Entrance Hall

Lounge: 14'0 into bay x 13'8 (4.27m x 4.17m)

Dining Room: 11'4 x 11'3 (3.46m x 3.43m)

Kitchen: 8'2 x 7'4 (2.49m x 2.24m)

FIRST FLOOR

Landing

Bathroom

Bedroom 3: 11'7 x 11'5 (3.53m x 3.48m)

Bedroom 2: 15'0 into bay x 12'7 (4.58m x 3.84m)

Bedroom 4: 8'8 x 6'1 (2.64m x 1.86m)

SECOND FLOOR

Landing

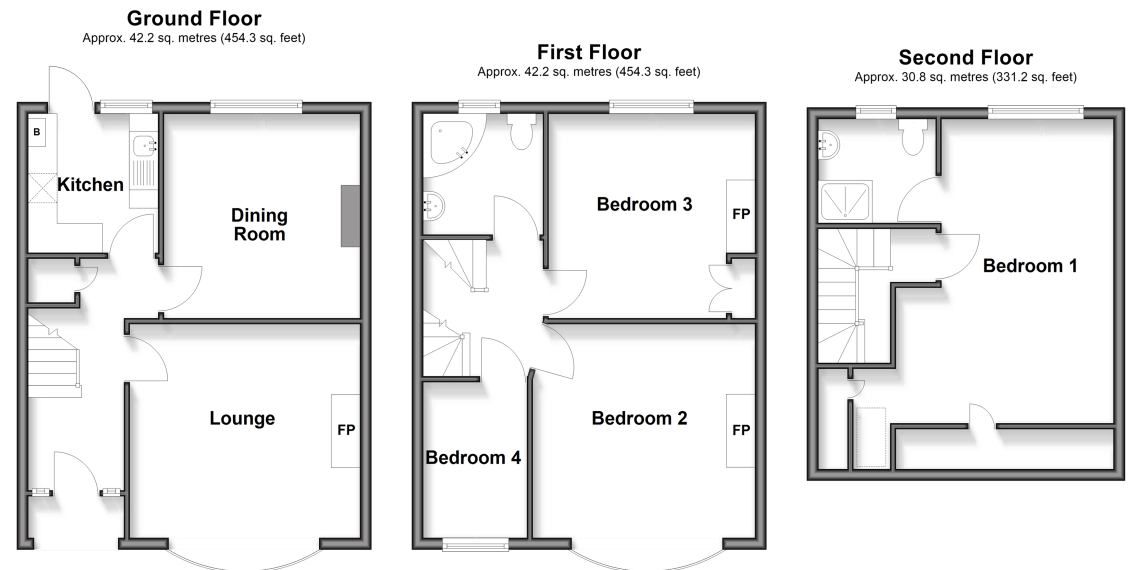
Bedroom 1: 17'2 x 12'4 (5.24m x 3.76m)

En-suite Shower Room

OUTSIDE

Front Garden

Rear Garden



Call Gillingham - 01634 851191 ■ wardsofkent.co.uk

- Legal advice should be taken to verify fixtures/fittings, planning, alterations and/or lease details
- Through a Homewise Home For Life Plan people aged 60+ can secure this property for up to 50% less, by purchasing a Lifetime Lease.

■ Appliances & services are untested, dimensions are approximate and floor plans are not to scale



10927314/20251115/ML/GS