



Sinclair  Hammelton

ASKING PRICE

£425,000

St. Marys Green

Biggin Hill, TN16 3RB

PROPERTY SUMMARY

Set on this quiet cul-de-sac location, this spacious three bedroom end of terrace family home has been modernised and tastefully decorated by the current owners. The property offers well proportioned accommodation, a generous kitchen/diner, four piece bathroom suite, landscaped south facing rear garden and a garage en bloc, providing secure parking or further storage. The property is an ideal first time family home purchase. EPC: D

Freehold
COUNCIL TAX - D
Construction - Traditional brick
Mains Services - Gas, Electricity and Water
Heating System - Gas
Broadband –
Mobile coverage -
Restrictive covenants –

3

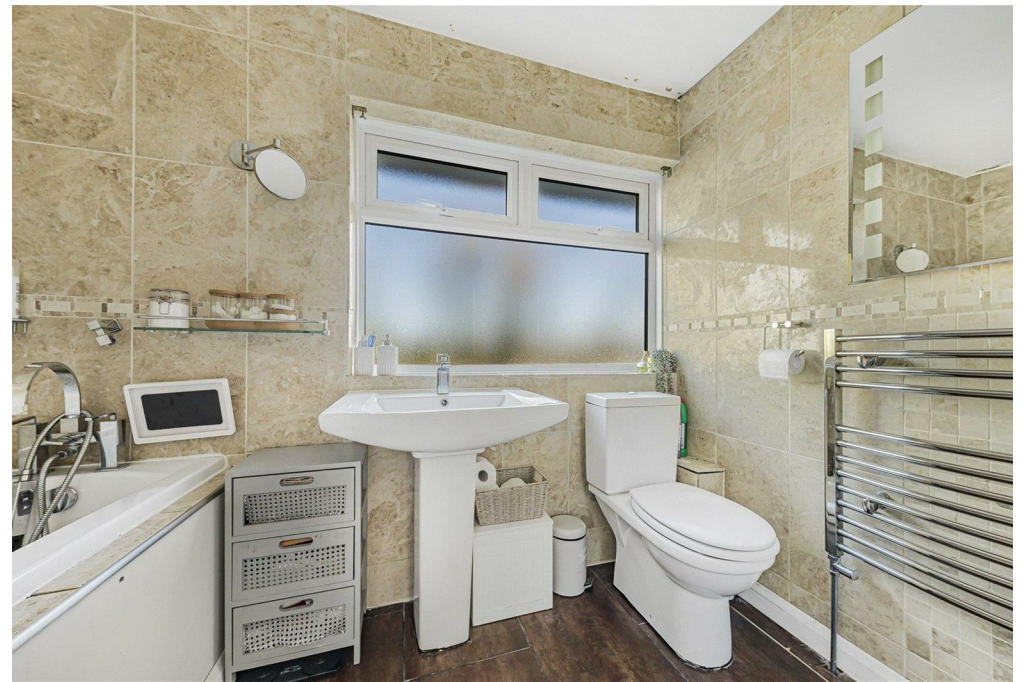


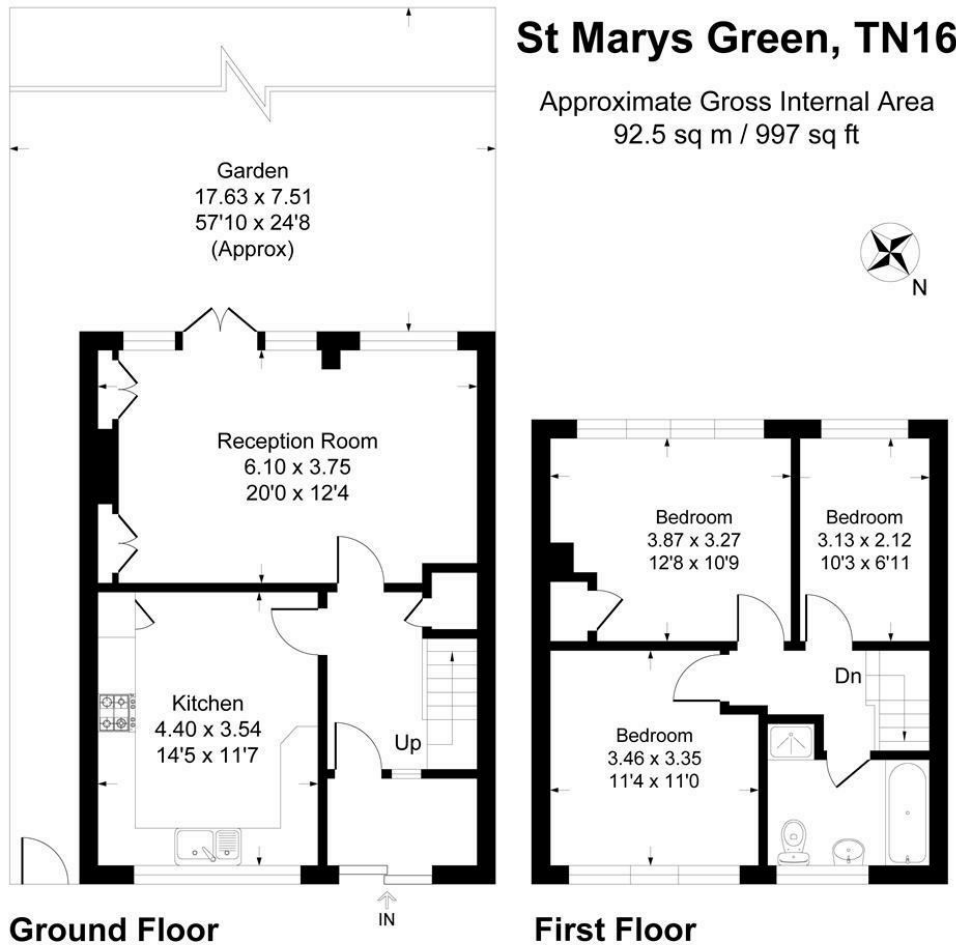
1



1







This plan is for layout guidance only. Not drawn to scale unless stated. Windows and door openings are approximate. Whilst every care is taken in the preparation of this plan, please check all dimensions, shapes and compass bearings before making any decisions reliant upon them.
Produced By Planpix

LOCAL AUTHORITY

TENURE

Freehold

EPC RATING

D

COUNCIL TAX BAND

D

VIEWINGS

By prior appointment only

Energy Efficiency Rating		
	Current	Potential
Very energy efficient - lower running costs		
(92 plus) A		83
(81-91) B		
(69-80) C		
(55-68) D	64	
(39-54) E		
(21-38) F		
(1-20) G		
Not energy efficient - higher running costs		
England & Wales		EU Directive 2002/91/EC

Agents Note: Whilst every care has been taken to prepare these particulars, they are for guidance purposes only. All measurements are approximate and are for general guidance purposes only and whilst every care has been taken to ensure their accuracy, they should not be relied upon and potential buyers/tenants are advised to recheck the measurements

Sinclair Hammelton

OFFICE ADDRESS

1&2 The Grange
Westerham
Kent
TN16 7AH

OFFICE DETAILS

01959 587 460
infowh@sinclairhammelton