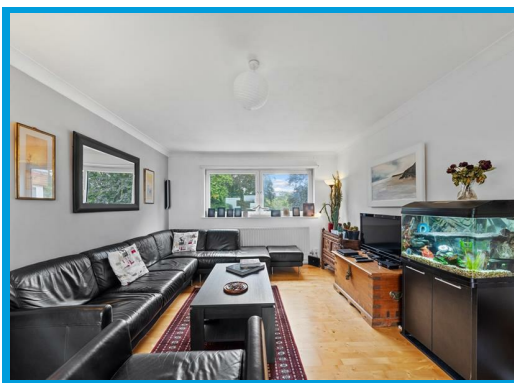




Warren Road, Guildford, GU1 2HT

Offers In Excess Of £340,000

This spacious top-floor apartment in a prime Guildford location offers stunning views across the town and towards London. Featuring two large bedrooms, a bright living room, separate dining area, private office space, and on-site parking, it's just a short walk from the town centre and surrounded by scenic countryside walks.



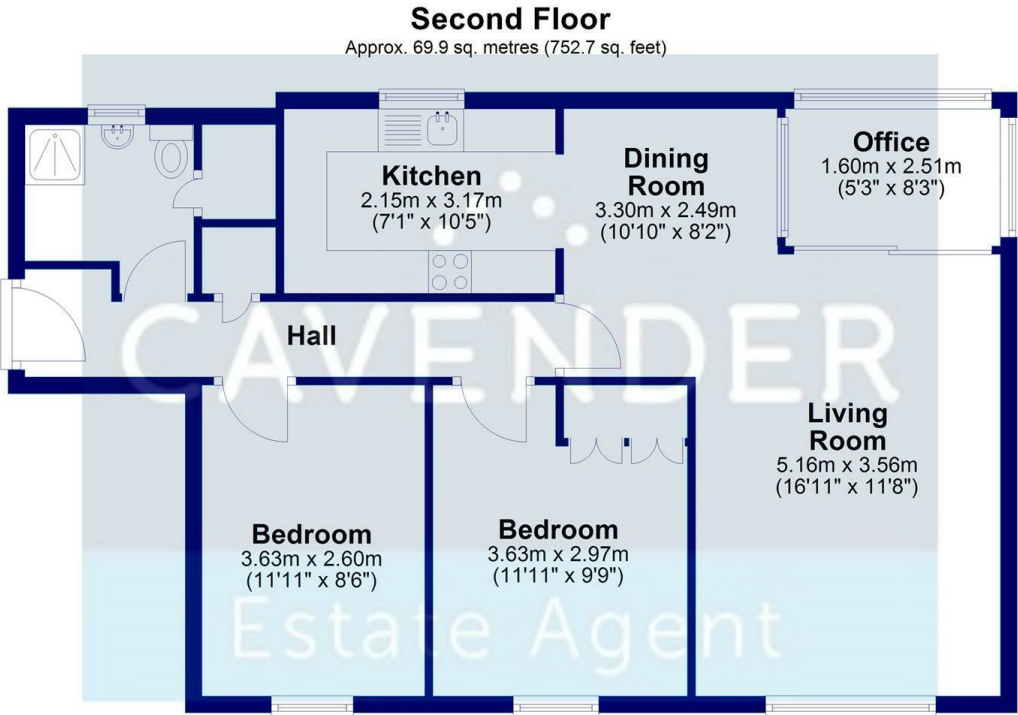
Description

Set in one of Guildford's most sought-after areas, this spacious top-floor apartment with stunning views offers the perfect blend of comfort, style, and convenience. Located within walking distance of the town centre and surrounded by picturesque countryside and scenic walking trails, it's ideal for professionals, downsizers, or anyone seeking a peaceful yet connected lifestyle.

Flooded with natural light, the apartment features two generously sized bedrooms, a large, airy living room, and a separate dining room—perfect for everyday living and entertaining. A dedicated office space makes working from home a true pleasure, boasting panoramic views across Guildford and stretching all the way to London.

Additional highlights include private parking—an increasingly rare find this close to town—and easy access to Guildford's vibrant shops, cafés, restaurants, and excellent transport links.

This is a rare opportunity to secure a beautifully appointed, spacious top-floor apartment with stunning views in one of the area's most desirable locations.



Total area: approx. 69.9 sq. metres (752.7 sq. feet)

