



Long Lane, SE1

£450,000

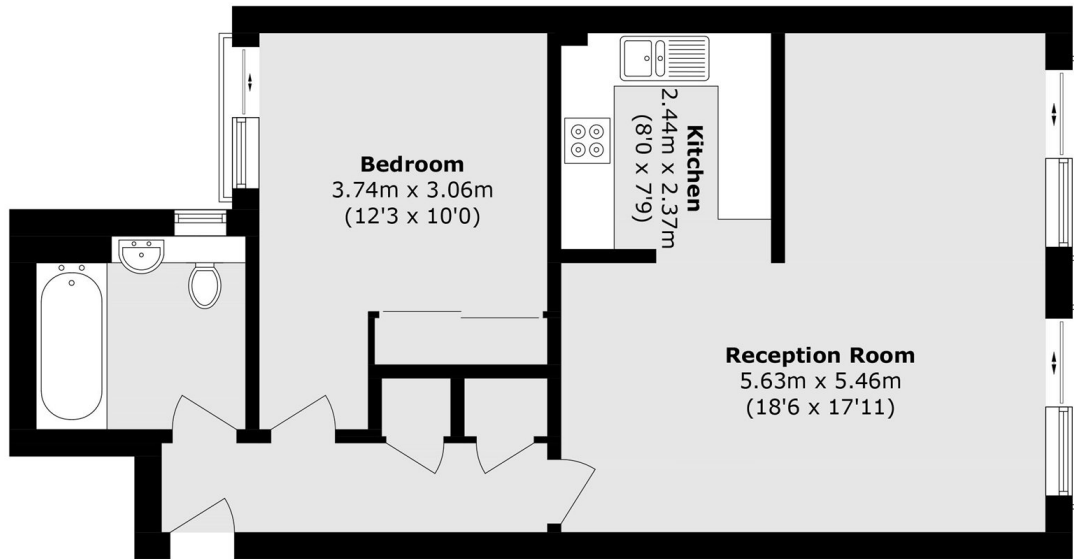
A highly attractive south-facing apartment, with a spacious open plan living room and fully fitted kitchen, with ample room for dining and a separate seating area, a generous double bedroom, a modern bathroom and plenty of built-in storage. Sold chain free. Offers in excess of £450,000

The Printworks Apartments are set in the heart of SE1, moments away from London Bridge Station. Bermondsey Street, Borough Market and the Southbank are all on your doorstep, with numerous attractions, cafés, restaurants, galleries and other amenities nearby.

Features

Offers in excess of £450,000
South-Facing Aspect
Open Plan Living Area
Wooden Floors Throughout
Secure Entry & Lift Access
Chain Free Sale

Long Lane, London, SE1



Fourth Floor

Total area (approx.): 56.6 sq. m (609.2 sq. ft)