



Court Close, Deal

Guide Price £385,000

DOMINIC MURPHY POWERED BY exp TM UK

@ dominic.murphy@exp.uk.com

dominicmurphy.exp.uk.com

01304 746 016

Court Close, Deal

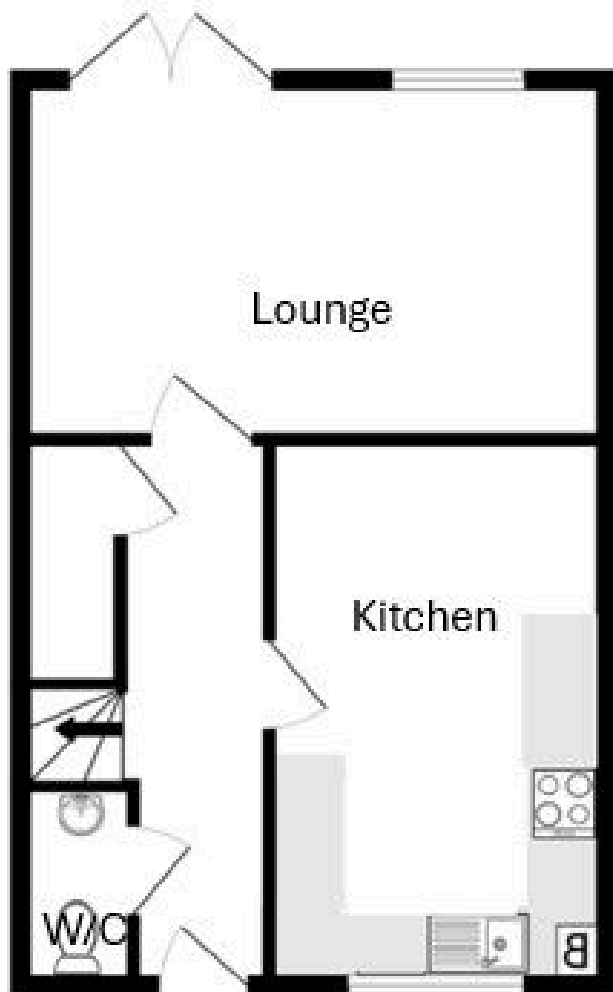
Beautifully presented four-bedroom semi-detached townhouse offering spacious and versatile living throughout, complete with off-street parking and a lovely private rear garden.



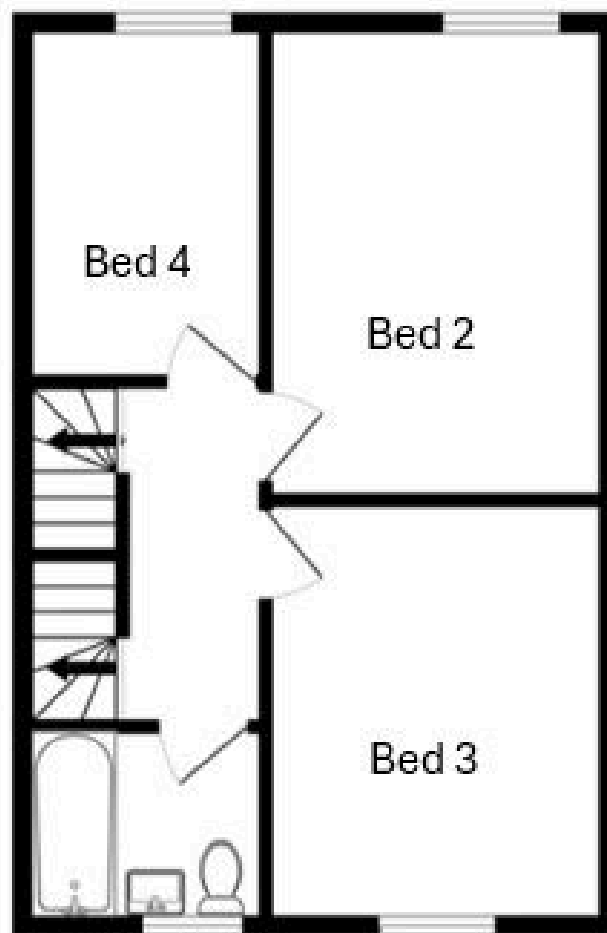




GROUND FLOOR
39.5 sq.m. (425 sq.ft.) approx.



1ST FLOOR
39.5 sq.m. (425 sq.ft.) approx.



2ND FLOOR
28.6 sq.m. (308 sq.ft.) approx.

