



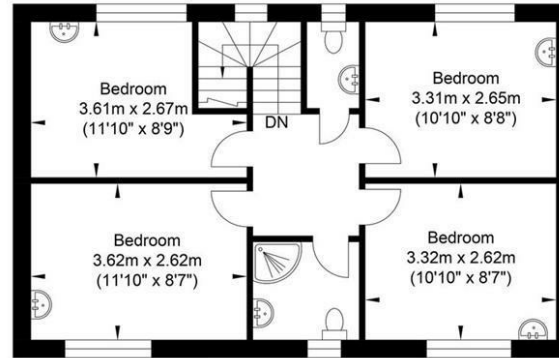
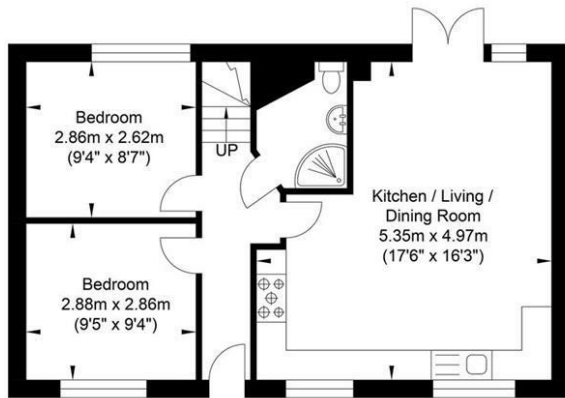
6 Bed
House - Terraced
located in

£3,250 Per month



TAYLOR
MICHAEL
STUDENTS

Twyford Road



Ground Floor
Approximate Floor Area
509.67 sq ft
(47.35 sq m)

First Floor
Approximate Floor Area
509.67 sq ft
(47.35 sq m)

Approximate Gross Internal Area = 94.70 sq m / 1019.34 sq ft

Illustration for identification purposes only, measurements are approximate, not to scale.

CONTACT

62 Church Road
Hove
East Sussex
BN3 2FP

E: lettings@taylormichael.agency
T:
<https://taylormichael.agency/>

