



**2 Parker Avenue, Eastchurch**  
Sheerness

Offers Over **£625,000**

## 2 Parker Avenue

Eastchurch, Sheerness

Impressive five bedroom detached home in Kingsborough Manor with spacious kitchen, conservatory, double garage, cabin bar, large garden, and high spec finishes. Ideal for family living. Council Tax band: F

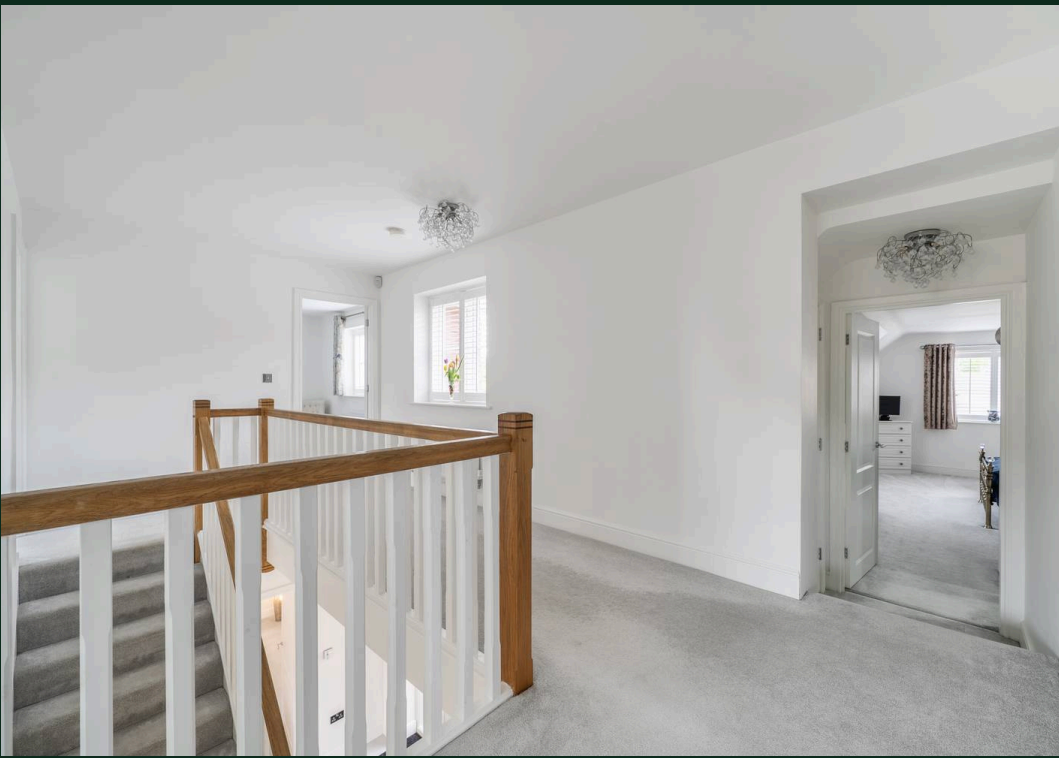
Tenure: Freehold

EPC Energy Efficiency Rating: C

EPC Environmental Impact Rating: C

- 5 Bedroom detached executive home situated at Kingsborough Manor
- Situated at Kingsborough Manor built by Jones Home
- Kitchen/diner/ family room with central island, fitted appliances and Bifold doors to conservatory
- Utility with plumbing for washing machine access to the garden and access to double garage
- Family bathroom, 2 ensuites and downstairs cloakroom
- Spacious and sunny lounge with feature bay window
- Driveway with off road parking for several cars
- Cabin with bar for entertaining and relaxing
- Generous garden with paved patio area and external lighting
- Viewing is highly recommended







# Parker Avenue, Eastchurch, Sheerness, ME12

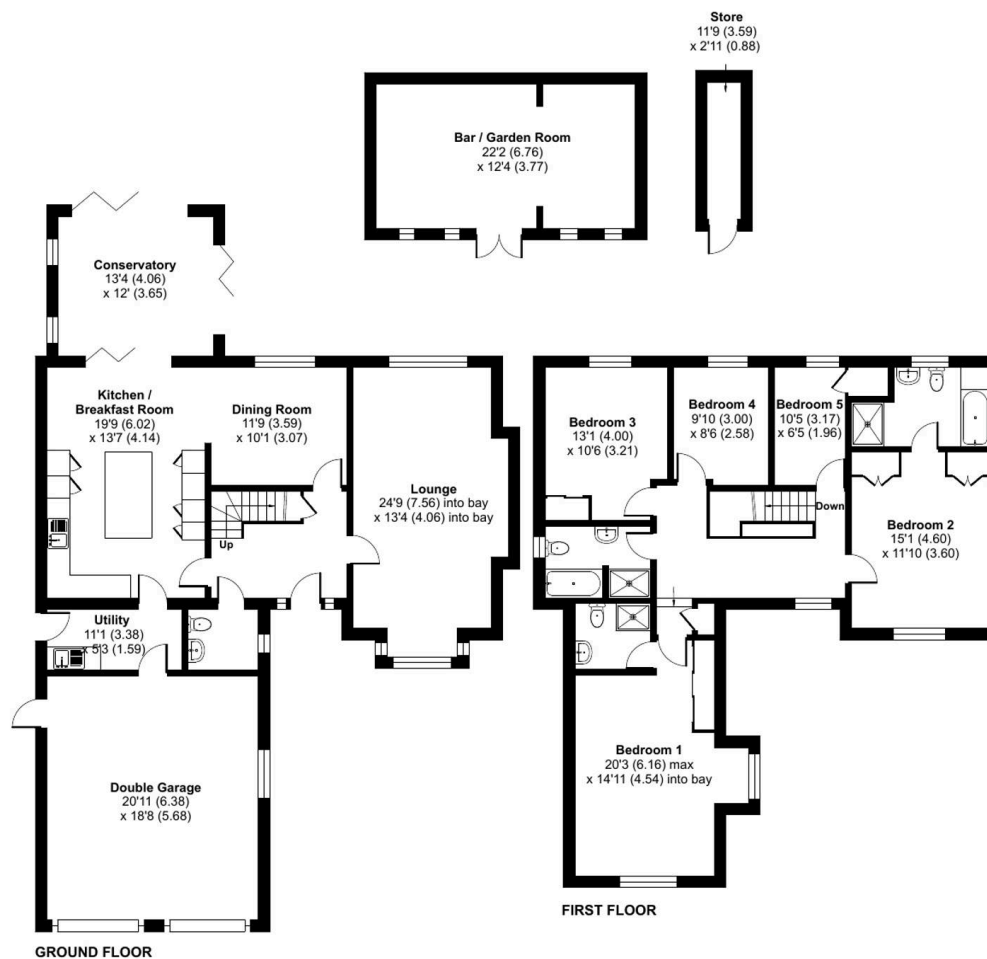
Approximate Area = 2182 sq ft / 202.7 sq m

Garage = 380 sq ft / 35.3 sq m

Outbuildings = 309 sq ft / 28.7 sq m

Total = 2871 sq ft / 266.7 sq m

For identification only - Not to scale





## Homely Bespoke Estate Agents

10 Orchard Way, Eastchurch – ME12 4DS

07817 727321

[lynne@homelyproperties.co.uk](mailto:lynne@homelyproperties.co.uk)

[www.homelyproperties.co.uk](http://www.homelyproperties.co.uk)