



Flat 5, 39 Bramham Gardens, London | Earls Court | London | SW5 0JE

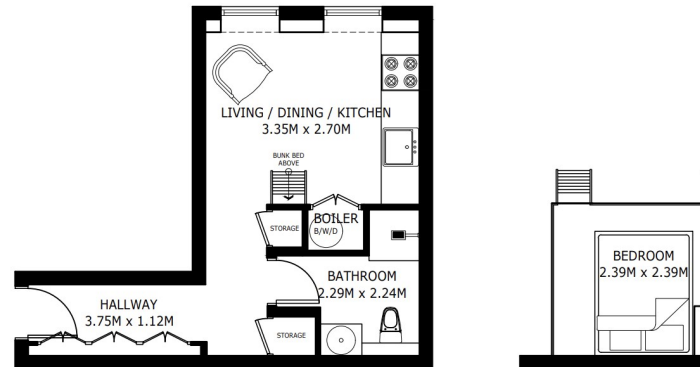
£1,780 Per Month

SÉJOUR

**Flat 5, 39 Bramham Gardens,
London | Earls Court
London | SW5 0JE**

Positioned within the beautifully restored Bramham Gardens development, this exceptional mezzanine studio apartment has been newly refurbished and thoughtfully curated by award-winning interior designers to deliver stylish, contemporary living in one of West London's most desirable garden square locations.

- Recently refurbished designer studio apartment
- Contemporary open-plan kitchen with integrated appliances
- High-specification modern bathroom
- Access to exclusive private garden square
- Bright interiors with excellent use of space
- Prime Bramham Gardens location in West London



UNIT 5

GROSS INTERNAL AREA
19.95 SQ.M. / 214.74 SQ.FT.

*SIZES AND DIMENSIONS ARE APPROXIMATE, ACTUAL MAY VARY.

| Energy Efficiency Rating | | Current | Potential |
|--|---|----------------------------|-----------|
| <i>Very energy efficient - lower running costs</i> | | | |
| (92 plus) | A | | |
| (81-91) | B | | |
| (69-80) | C | 75 | 82 |
| (55-68) | D | | |
| (39-54) | E | | |
| (21-38) | F | | |
| (1-20) | G | | |
| <i>Not energy efficient - higher running costs</i> | | | |
| England & Wales | | EU Directive 2002/91/EC | |

**Council Tax Band C
EPC Rating C**

**10 Cromwell Pl
South Kensington
London
SW7 2JN**

**020 3865 0611
lettings@cityrelay.com**