

An aerial photograph of a coastal city at sunset. The sky is a mix of blue and orange, with wispy clouds. In the background, there are mountains. The city below is densely packed with buildings and greenery. The text "18 INDIVIDUALLY DESIGNED SUSTAINABLE VILLAS" is overlaid in white, bold, sans-serif font in the center of the image.

18 INDIVIDUALLY DESIGNED SUSTAINABLE VILLAS

VILLA
N°5



VILLA Nº5

LOCATION

In this image, taken from Google Earth before work began in 2018, the layout of the development is superimposed upon the 6-hectare plot of land.

The highest point of the plot is 365 metres above sea level.

These images are not contractual but only for illustrative purposes. The images are subject to technical, legal or commercial modifications approved by the project management or the competent authority. The 3D images corresponding to the facades, common elements, and the rest of the spaces are merely indicative and will be subject to verification or Modification in the technical projects. The furniture of the 3D images is not included and the equipment of the villas will be indicated in the corresponding building and quality specifications. The energy certification corresponds with the one established in the project in process. All the information and documentation will be provided according to the terms established in the Royal Decree 515/1989 and in the rest of the autonomous or state regulations currently in force that could complement the Mentioned Decree.

Villa N°5 sits on a south-southwest facing plot that has stunning views across the Mediterranean to Gibraltar. The carefully thought-out orientation of the villa ensures uninterrupted sea views and complete privacy. With generous terraces and an ample garden, the villa design makes the most of the fabulous Marbella climate. In key parts of the villa the windows disappear into the walls, framing the undisturbed, panoramic views of the idyllic natural surroundings. There are four spacious ensuite bedrooms, with the Master Suite enjoying its own private terrace. Built over four floors with a huge basement that can be customised to suit the owners' needs and a carport for 2 cars, this is a magnificent family home.



VILLA N°5

SECOND FLOOR	20,94 m ²
FIRST FLOOR	144,29 m ²
GROUND FLOOR	111,36 m ²
BASEMENT	258,00 m ²
TOTAL	534,59 m²

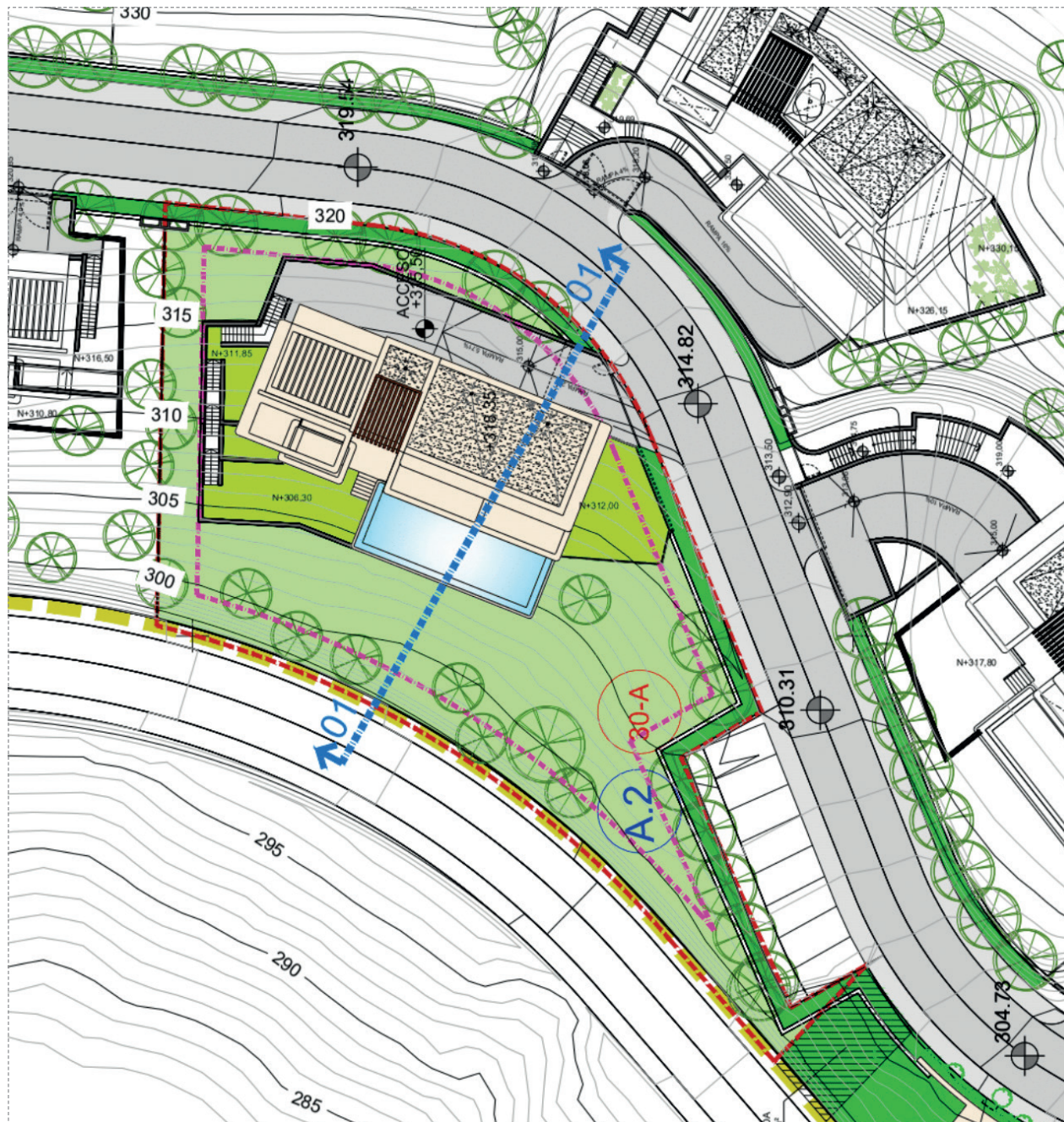
TERRACES	39,16 m ²
PERGOLAS	48,69 m ²
GARAGE	41,44 m ²
COMUN AREAS	8,70 m ²
TOTAL CONSTRUCTED	672,58 m²

PLOT	1.580,00 m²
GARDEN	183,88 m ²
SWIMMING POOL	56,43 m ²
TOTAL USEFUL AREA	495,88 m²
DECREE 218/2005	

These images are not contractual but only for illustrative purposes. The images are subject to technical, legal or commercial modifications approved by the project management or the competent authority. The 3D images corresponding to the facades, common elements, and the rest of the spaces are merely indicative and will be subject to verification or Modification in the technical projects. The furniture of the 3D images is not included and the equipment of the villas will be indicated in the corresponding building and quality specifications. The energy certification corresponds with the one established in the project in process. All the information and documentation will be provided according to the terms established in the Royal Decree 515/1989 and in the rest of the autonomous or state regulations currently in force that could complement the Mentioned Decree.

VILLA Nº5

PLOT OVERVIEW



These images are not contractual but only for illustrative purposes. The images are subject to technical, legal or commercial modifications approved by the project management or the competent authority. The 3D images corresponding to the facades, common elements, and the rest of the spaces are merely indicative and will be subject to verification or Modification in the technical projects. The furniture of the 3D images is not included and the equipment of the villas will be indicated in the corresponding building and quality specifications. The energy certification corresponds with the one established in the project in process. All the information and documentation will be provided according to the terms established in the Royal Decree 515/1989 and in the rest of the autonomous or state regulations currently in force that could complement the Mentioned Decree.

VILLA Nº5

FRONTAL ELEVATIONS

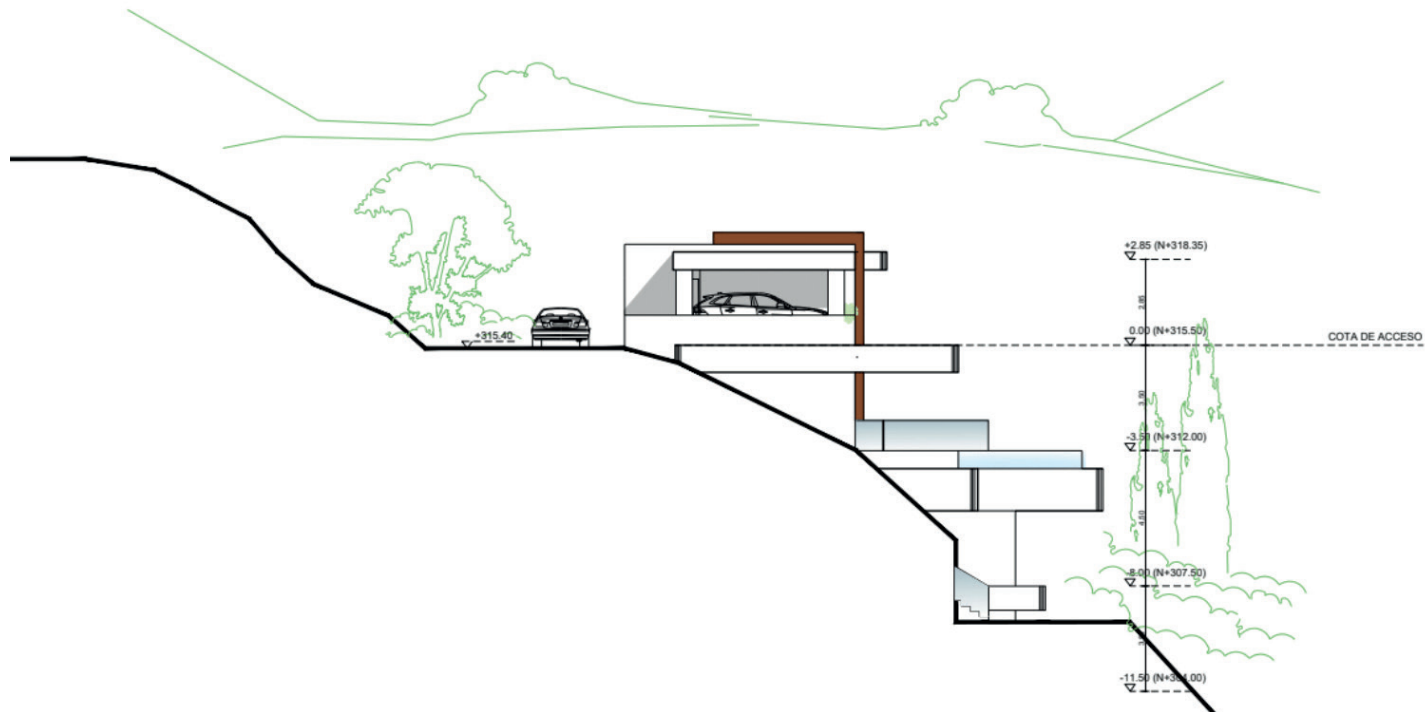


ALZADO FRONTAL (A-1)



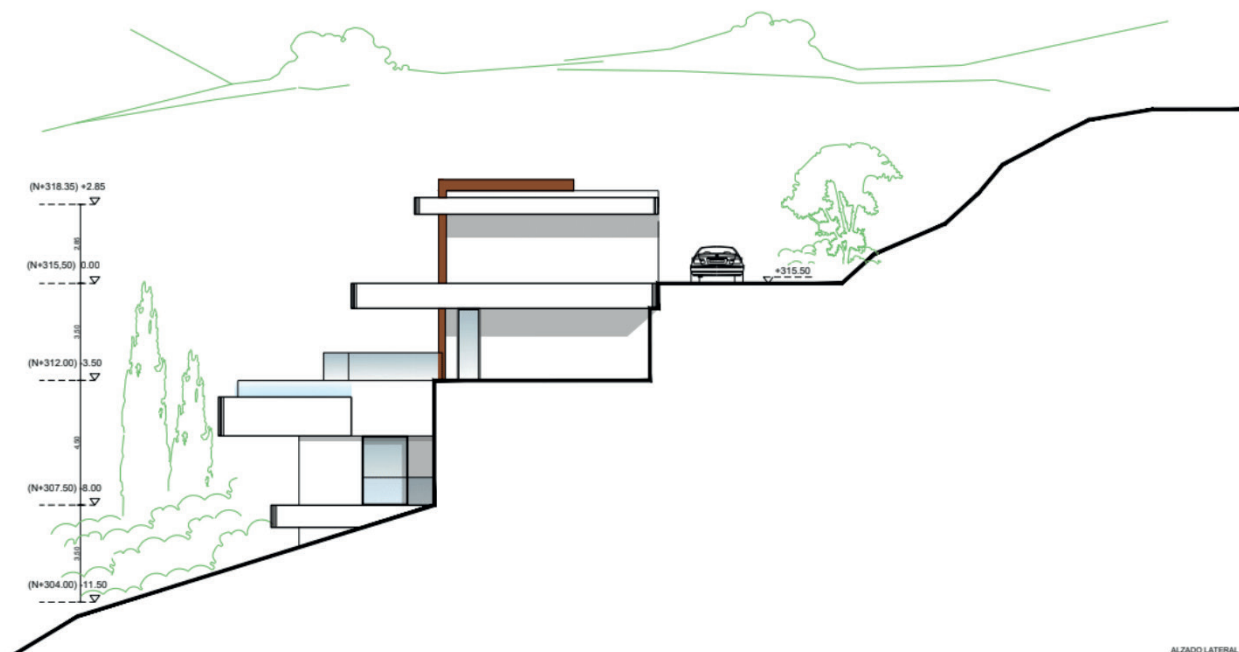
ALZADO FRONTAL (A-2)

These images are not contractual but only for illustrative purposes. The images are subject to technical, legal or commercial modifications approved by the project management or the competent authority. The 3D images corresponding to the facades, common elements, and the rest of the spaces are merely indicative and will be subject to verification or Modification in the technical projects. The furniture of the 3D images is not included and the equipment of the villas will be indicated in the corresponding building and quality specifications. The energy certification corresponds with the one established in the project in process. All the information and documentation will be provided according to the terms established in the Royal Decree 515/1989 and in the rest of the autonomous or state regulations currently in force that could complement the Mentioned Decree.



VILLA Nº5

LATERAL ELEVATIONS

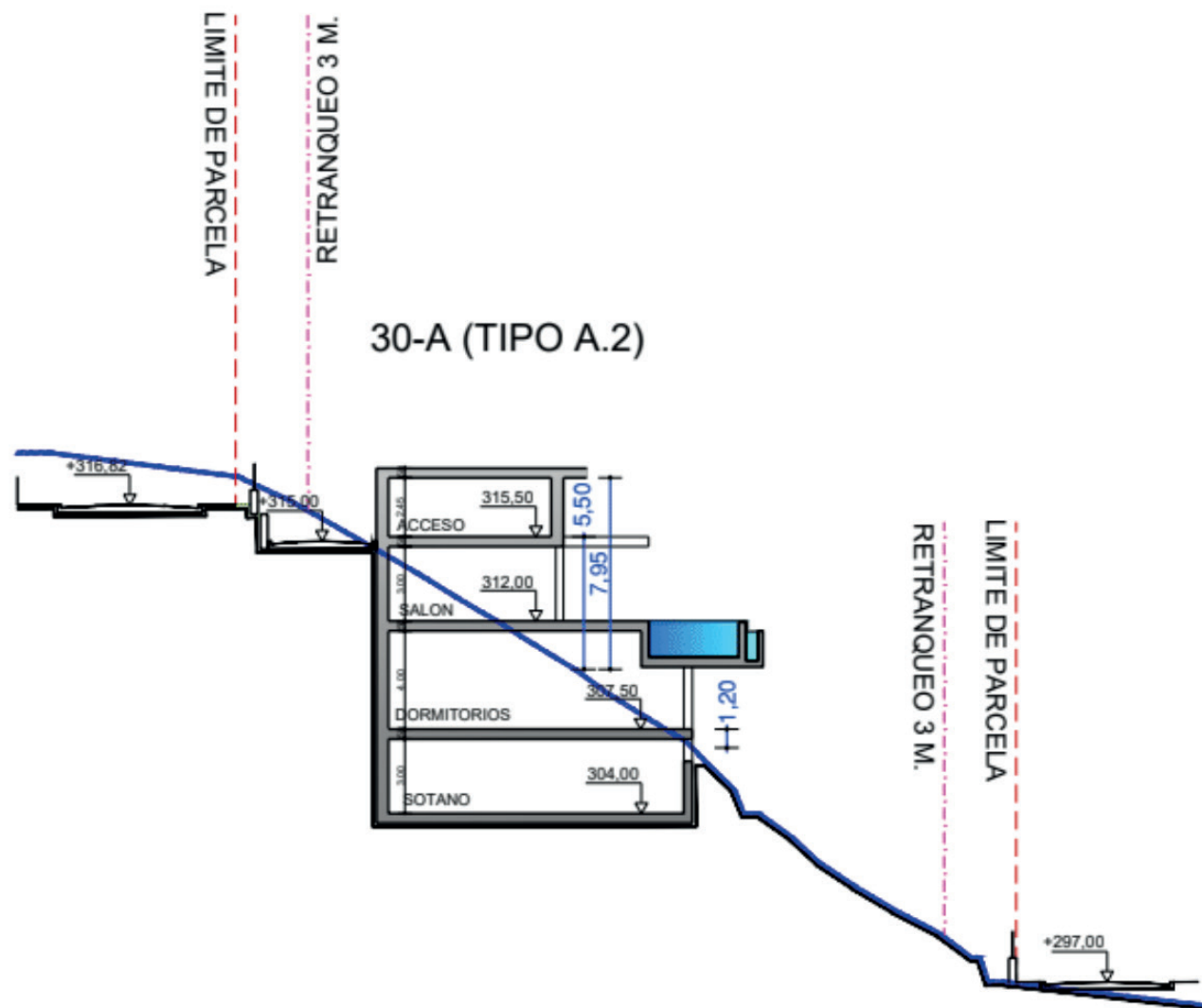


ALZADO LATERAL (A-4)

These images are not contractual but only for illustrative purposes. The images are subject to technical, legal or commercial modifications approved by the project management or the competent authority. The 3D images corresponding to the facades, common elements, and the rest of the spaces are merely indicative and will be subject to verification or Modification in the technical projects. The furniture of the 3D images is not included and the equipment of the villas will be indicated in the corresponding building and quality specifications. The energy certification corresponds with the one established in the project in process. All the information and documentation will be provided according to the terms established in the Royal Decree 515/1989 and in the rest of the autonomous or state regulations currently in force that could complement the Mentioned Decree.

VILLA Nº5

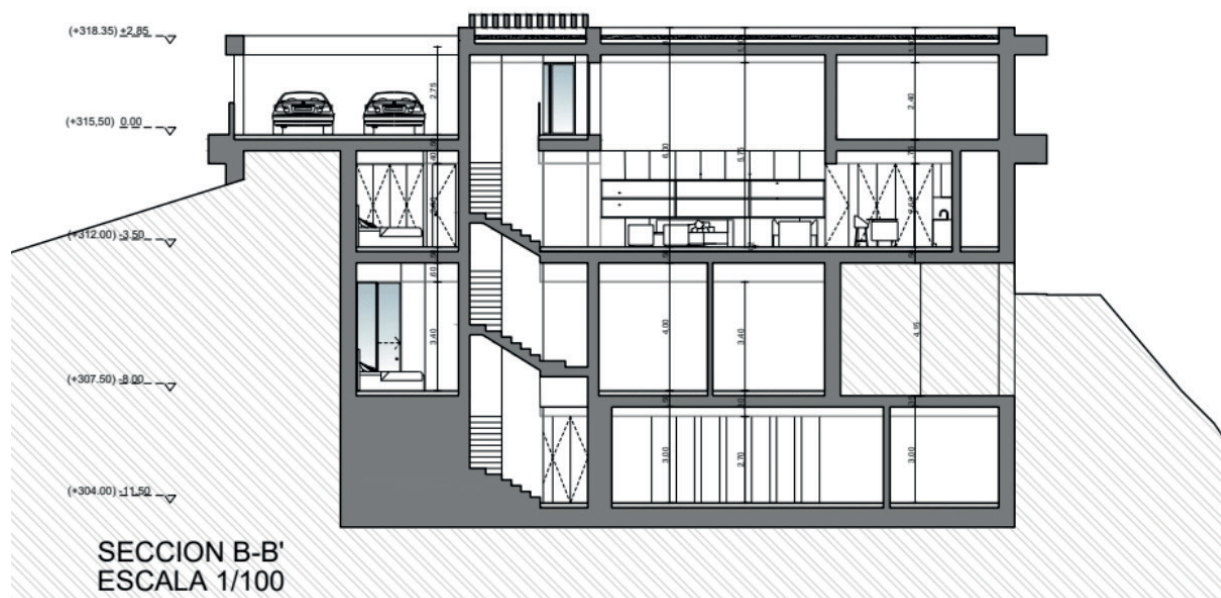
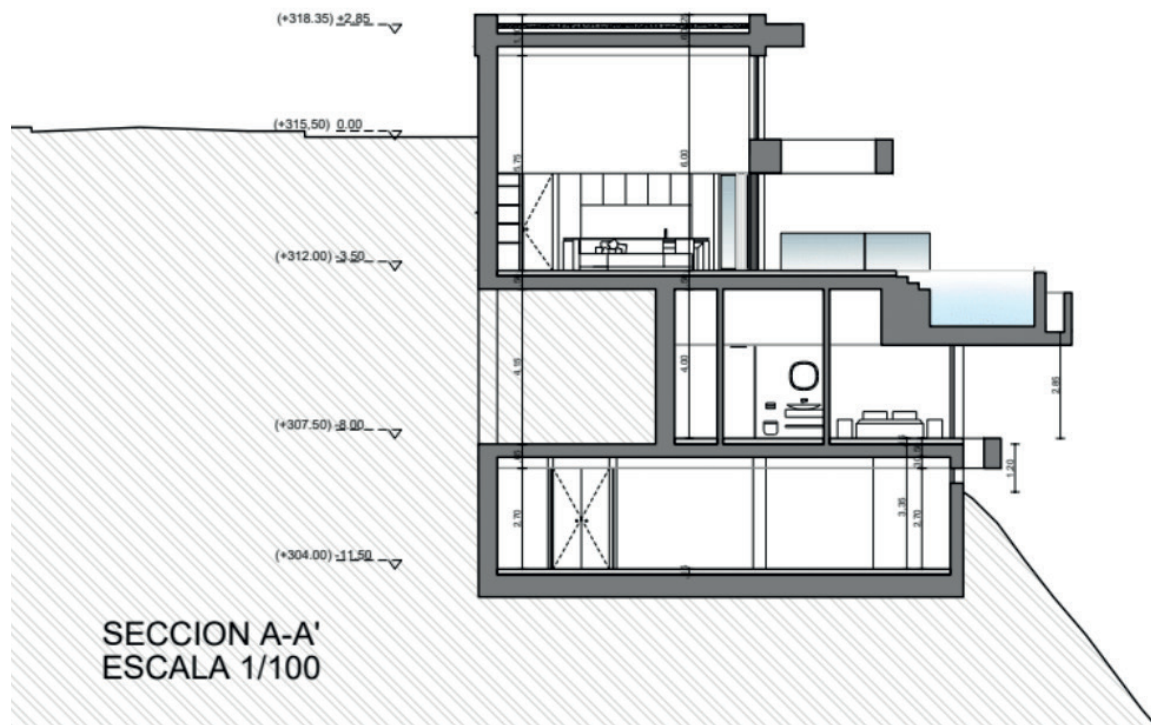
SECTIONS



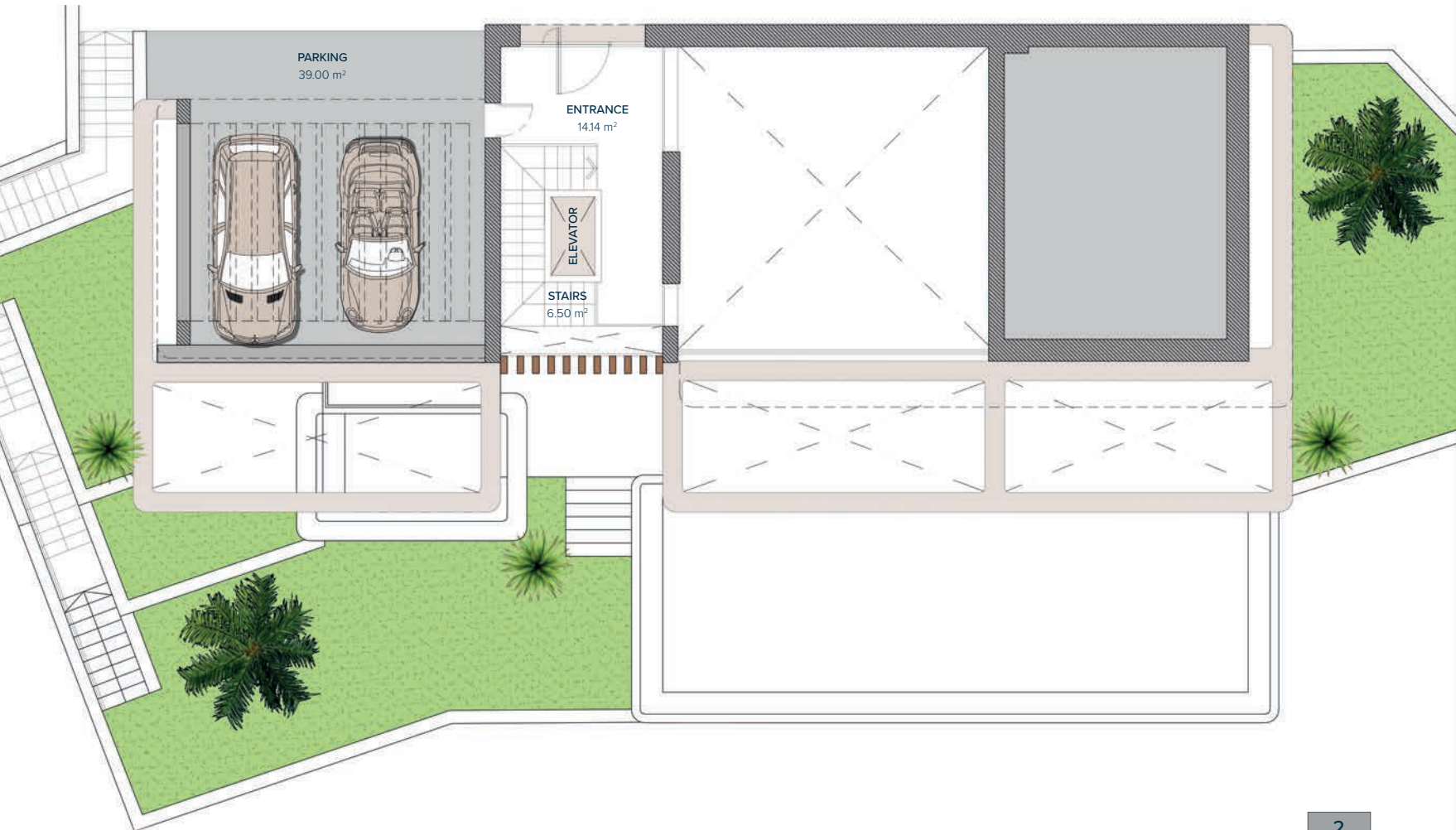
These images are not contractual but only for illustrative purposes. The images are subject to technical, legal or commercial modifications approved by the project management or the competent authority. The 3D images corresponding to the facades, common elements, and the rest of the spaces are merely indicative and will be subject to verification or Modification in the technical projects. The furniture of the 3D images is not included and the equipment of the villas will be indicated in the corresponding building and quality specifications. The energy certification corresponds with the one established in the project in process. All the information and documentation will be provided according to the terms established in the Royal Decree 515/1989 and in the rest of the autonomous or state regulations currently in force that could complement the Mentioned Decree.

VILLA Nº5

SECTIONS



These images are not contractual but only for illustrative purposes. The images are subject to technical, legal or commercial modifications approved by the project management or the competent authority. The 3D images corresponding to the facades, common elements, and the rest of the spaces are merely indicative and will be subject to verification or Modification in the technical projects. The furniture of the villas will be indicated in the corresponding building and quality specifications. The energy certification corresponds with the one established in the project in process. All the information and documentation will be provided according to the terms established in the Royal Decree 515/1989 and in the rest of the autonomous or state regulations currently in force that could complement the Mentioned Decree.



VILLA N°5

SECOND FLOOR

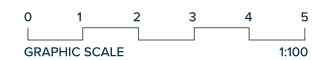
ENTRANCE

ENTRANCE	14,14 m ²
STAIRS	6,50 m ²
TOTAL	20,64 m²

PARKING

PARKING (PERGOLA)	39,00 m ²
TOTAL	39,00 m²

Entrance	2
	1
	0
	-1



These images are not contractual but only for illustrative purposes. The images are subject to technical, legal or commercial modifications approved by the project management or the competent authority. The 3D images corresponding to the facades, common elements, and the rest of the spaces are merely indicative and will be subject to verification or Modification in the technical projects. The furniture of the 3D images is not included and the equipment of the villas will be indicated in the corresponding building and quality specifications. The energy certification corresponds with the one established in the project in process. All the information and documentation will be provided according to the terms established in the Royal Decree 515/1989 and in the rest of the autonomous or state regulations currently in force that could complement the Mentioned Decree.



VILLA N°5

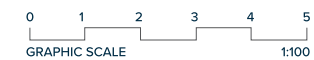
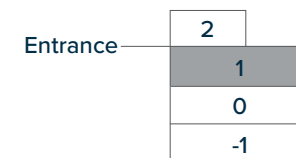
FIRST FLOOR

LIVING AREA

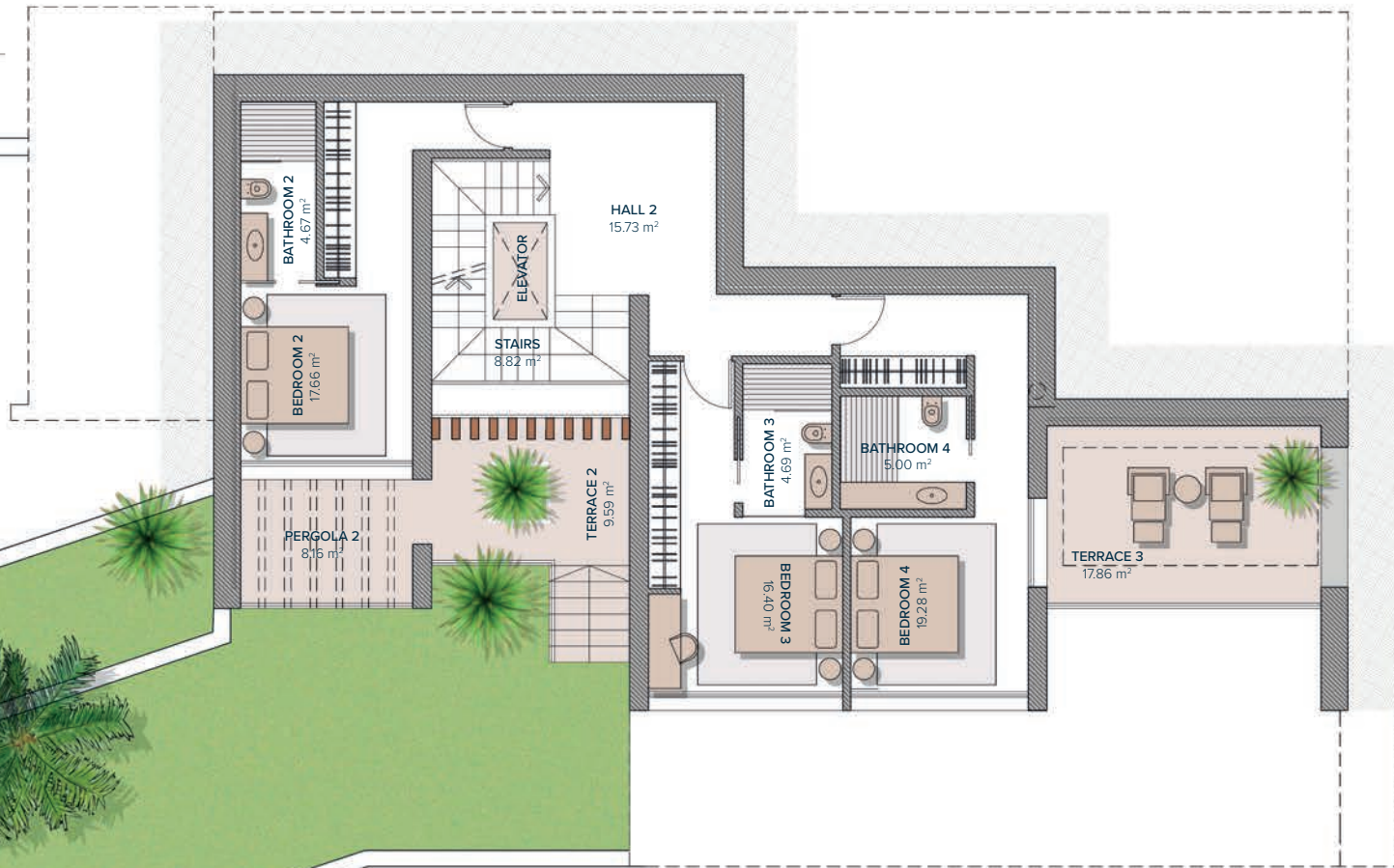
HALL 1	19,06 m ²
STAIRS	6,50 m ²
LOUNGE-DINING-KITCHEN	74,03 m ²
BATHROOM 1	5,48 m ²
BEDROOM 1	12,49 m ²
ROOM 1	9,99 m ²
TOTAL	127,55 m²

ACCESS & TERRACES

TERRACE 1	6,27 m ²
PERGOLA 1	37,34 m ²
TOTAL	43,61 m²
POOL	56,43 m ²
GARDEN	165,11 m ²



These images are not contractual but only for illustrative purposes. The images are subject to technical, legal or commercial modifications approved by the project management or the competent authority. The 3D images corresponding to the facades, common elements, and the rest of the spaces are merely indicative and will be subject to verification or Modification in the technical projects. The furniture of the 3D images is not included and the equipment of the villas will be indicated in the corresponding building and quality specifications. The energy certification corresponds with the one established in the project in process. All the information and documentation will be provided according to the terms established in the Royal Decree 515/1989 and in the rest of the autonomous or state regulations currently in force that could complement the Mentioned Decree.



VILLA Nº5

GROUND FLOOR

BEDROOMS

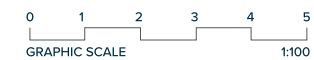
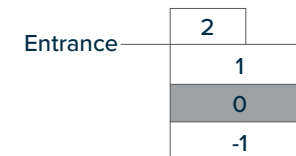
STAIRS	8,82 m ²
HALL 2	15,73 m ²
BATHROOM 2	4,67 m ²
BEDROOM 2	17,66 m ²
BATHROOM 3	4,69 m ²
BEDROOM 3	16,40 m ²
BATHROOM 4	5,00 m ²
BEDROOM 4	19,28 m ²

TOTAL **92,25 m²**

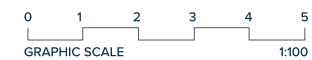
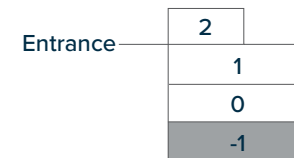
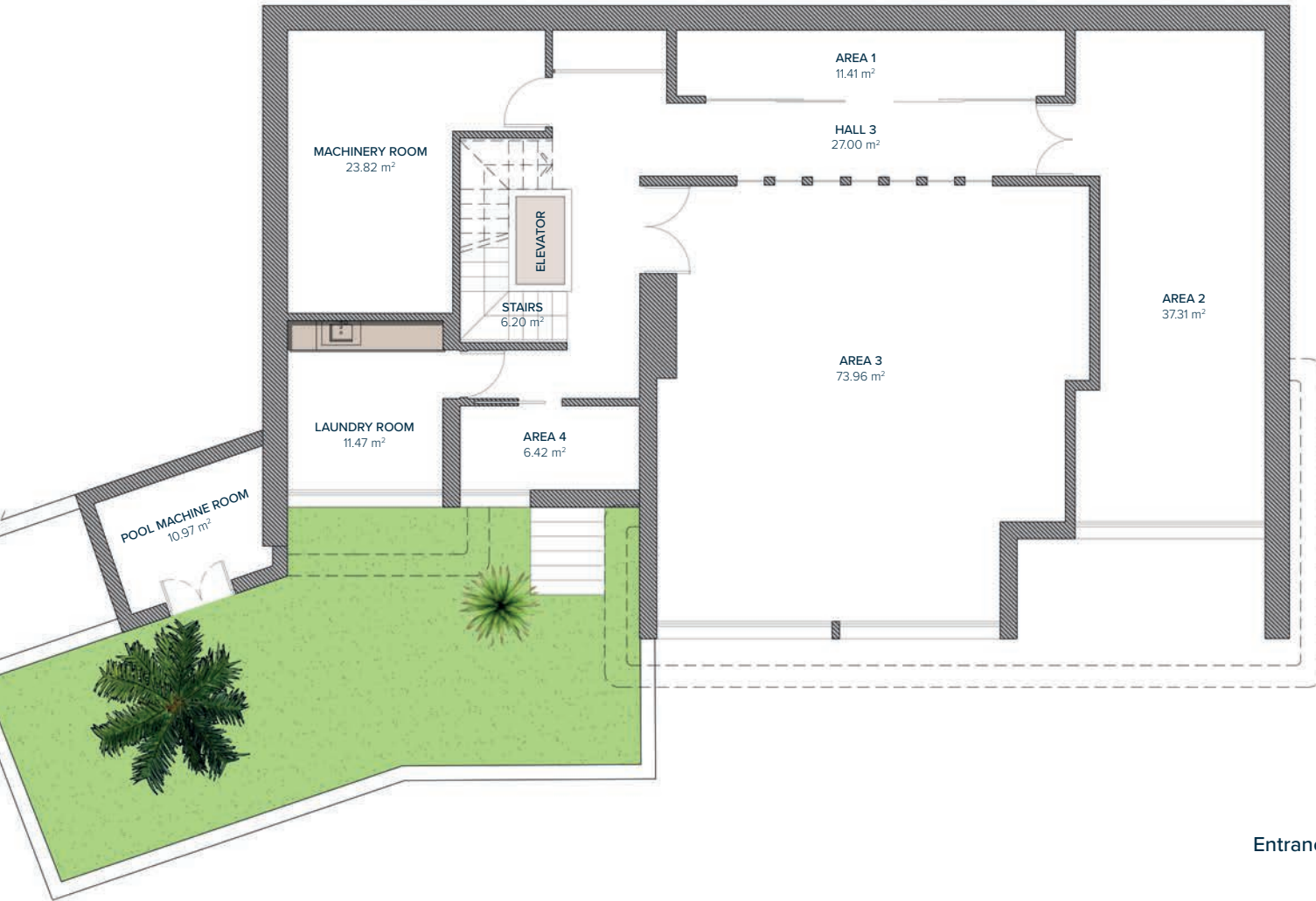
TERRACES

PERGOLA 2	8,16 m ²
TERRACE 2	9,59 m ²
TERRACE 3	17,86 m ²

TOTAL **35,61 m²**



These images are not contractual but only for illustrative purposes. The images are subject to technical, legal or commercial modifications approved by the project management or the competent authority. The 3D images corresponding to the facades, common elements, and the rest of the spaces are merely indicative and will be subject to verification or Modification in the technical projects. The furniture of the 3D images is not included and the equipment of the villas will be indicated in the corresponding building and quality specifications. The energy certification corresponds with the one established in the project in process. All the information and documentation will be provided according to the terms established in the Royal Decree 515/1989 and in the rest of the autonomous or state regulations currently in force that could complement the Mentioned Decree.

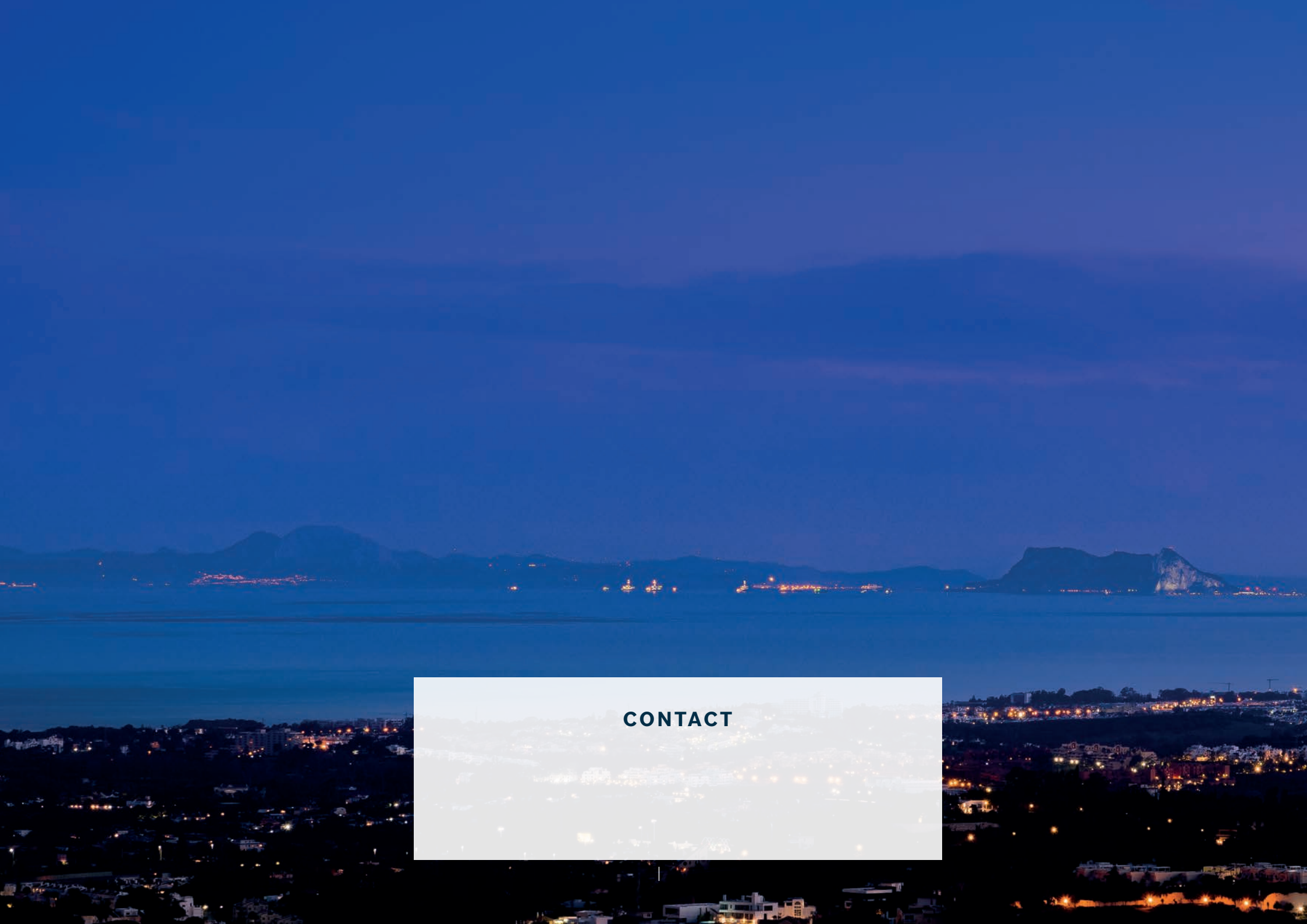


VILLA Nº5

BASEMENT

HALL 3	27,00 m ²
AREA 1	11,41 m ²
AREA 2	37,31 m ²
AREA 3	73,96 m ²
AREA 4	6,42 m ²
POOL MACHINE ROOM	10,97 m ²
STAIRS	6,20 m ²
MACHINERY ROOM	23,82 m ²
LAUNDRY ROOM	11,47 m ²
PATIO (ELEVATOR)	1,80 m ²
TOTAL	210,36 m²

These images are not contractual but only for illustrative purposes. The images are subject to technical, legal or commercial modifications approved by the project management or the competent authority. The 3D images corresponding to the facades, common elements, and the rest of the spaces are merely indicative and will be subject to verification or Modification in the technical projects. The furniture of the 3D images is not included and the equipment of the villas will be indicated in the corresponding building and quality specifications. The energy certification corresponds with the one established in the project in process. All the information and documentation will be provided according to the terms established in the Royal Decree 515/1989 and in the rest of the autonomous or state regulations currently in force that could complement the Mentioned Decree.



CONTACT