



**Vanbrugh Fields, SE3**

£1,500,000

**Dexters**



## Vanbrugh Fields, SE3

This substantial four bedroom semi-detached family home is arranged over three floors and benefits from off-street parking and excellent potential to extend (STPP).

The ground floor features a wide entrance hallway with a charming fireplace, a front reception room and a generous rear reception that flows into a bright conservatory overlooking the private garden ideal for entertaining. The kitchen sits just off the main living space and offers room to incorporate a utility area, along with a ground floor shower room. Upstairs, there are four well-proportioned double bedrooms and a family bathroom. The top floor loft room provides flexible additional space with scope to extend further, subject to planning. A fantastic family home offering both immediate space and future potential.

Situated on a quiet residential road and minutes from Westcombe Park and Maze Hill Stations and in an excellent position for schools. The shops and restaurants in East Greenwich are just a short walk away, as is Greenwich Royal Park and Observatory. North Greenwich Jubilee Line and the DLR at Cutty Sark are also within easy access.

### Features

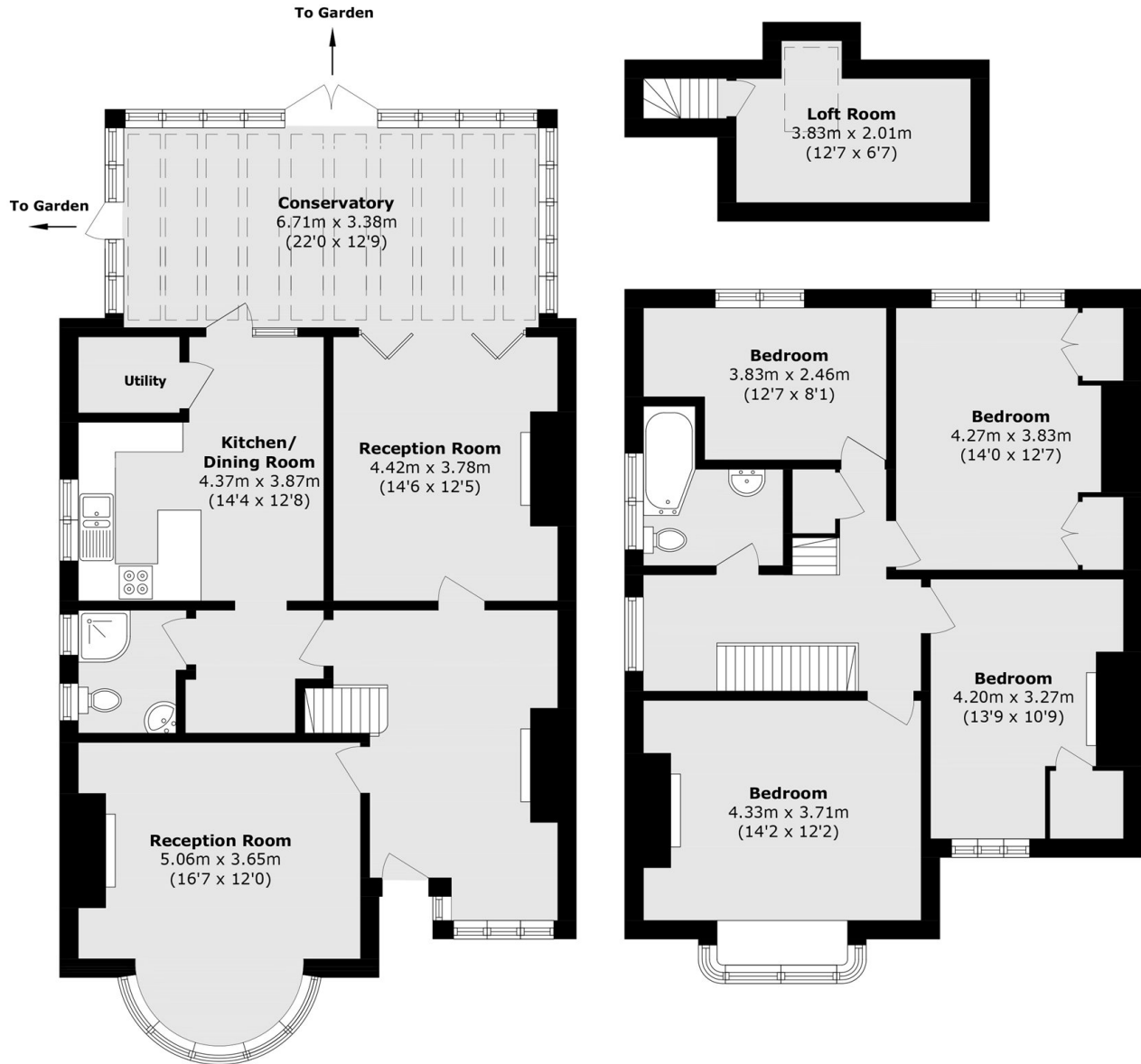
- Off Street Parking
- Semi-Detached
- Four Double Bedrooms
- Three Bathrooms
- Popular Residential Road
- Close To Greenwich Park







# Vanbrugh Fields, London, SE3



Total area (approx.): 183.9 sq. m (1979.4 sq. ft)

## Dexters

Blackheath  
1 Stratheden Road  
London  
SE3 7SX

Sales  
020 8815 2200

Energy Rating: D. We aim to make our particulars both accurate and reliable. However they are not guaranteed; nor do they form part of an offer or contract. If you require clarification on any points then please contact us, especially if you're traveling some distance to view. Please note that appliances and heating systems have not been tested and therefore no warranties can be given as to their good working order.

 **RICS** Regulated  
Estate Agent  
and Letting Agent

dexters.co.uk