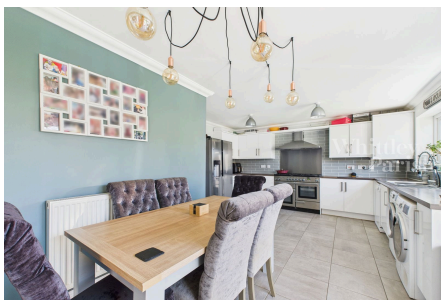


Sterlet Grove, Mulbarton, Norwich, NR14 8FS

Guide Price £525,000-£550,000

4 2 3



The ground floor features a large open-plan kitchen/diner with double doors opening onto a decked area and the fully enclosed rear garden beyond. The kitchen boasts ample workspace and modern fittings with plenty of room for a large dining table. The living room also benefits from double doors to the decked terrace, where external electrics are in place to accommodate a hot tub (available by separate negotiation). There is a ground floor cloakroom, a generous entrance hall, and a versatile additional reception room that could easily serve as a fifth bedroom, home office, or playroom depending on your needs. Upstairs, the property offers four spacious double bedrooms, including a luxurious master suite with a stylish four-piece en-suite bathroom. A well-appointed family bathroom serves the remaining bedrooms.

Key Features

- GUIDE PRICE £525,000 to £550,000
- 4 x double bedrooms
- Main bedroom with 4 piece en-suite
- Overlooking park area
- Large enclosed rear garden
- Solar panels & 5kw battery
- Ground floor 5th bedroom or study
- Cul-de-sac location
- Garage and driveway parking
- EV charger

