



Kenbrook House
Kensington High Street, W14





An elegant and exceptionally bright lateral apartment, positioned on the third floor of this distinguished mansion block on Kensington High Street.

Benefiting from a favourable south-facing orientation, the property enjoys an abundance of natural light throughout. The well-proportioned accommodation is centred around a generous reception and dining room, which opens onto a private balcony offering far-reaching views across London's skyline.

Presented in good order, the apartment comprises a separate contemporary kitchen with integrated appliances, a spacious principal bedroom with extensive built-in wardrobes, two further double bedrooms—both offering excellent storage—and two bathrooms.

Kenbrook House is an attractive and well-maintained period building situated in a prime position on Kensington High Street. The building has also recently undergone internal refurbishment. As well as the addition of double glazed windows. The property is ideally located for the wide range of shops, restaurants, and amenities the area affords, including the renowned Gail's Bakery a short distance away. The open green spaces of Holland Park are moments from the property, providing a rare sense of tranquillity within central London.

Transport links are superb, with High Street Kensington, Holland Park, and Kensington Olympia stations all within close proximity, offering convenient access across the capital.

- Three bedrooms
- Lift
- Caretaker
- Balcony
- Storage unit

Asking Price £1,600,000

Score	Energy rating	Current	Potential
92+	A		
81-91	B		
69-80	C		
55-68	D		
39-54	E		
21-38	F		
1-20	G		
		77 C	81 B

Tenure: Leasehold 126 years remaining

Service Charge: £6,500 per annum

Ground Rent: £0

Local Authority: Kensington and Chelsea

Council Tax Band: G

Chestertons Kensington Sales

116 Kensington High Street

London

W8 7RW

kensington@chestertons.co.uk

020 7937 7244

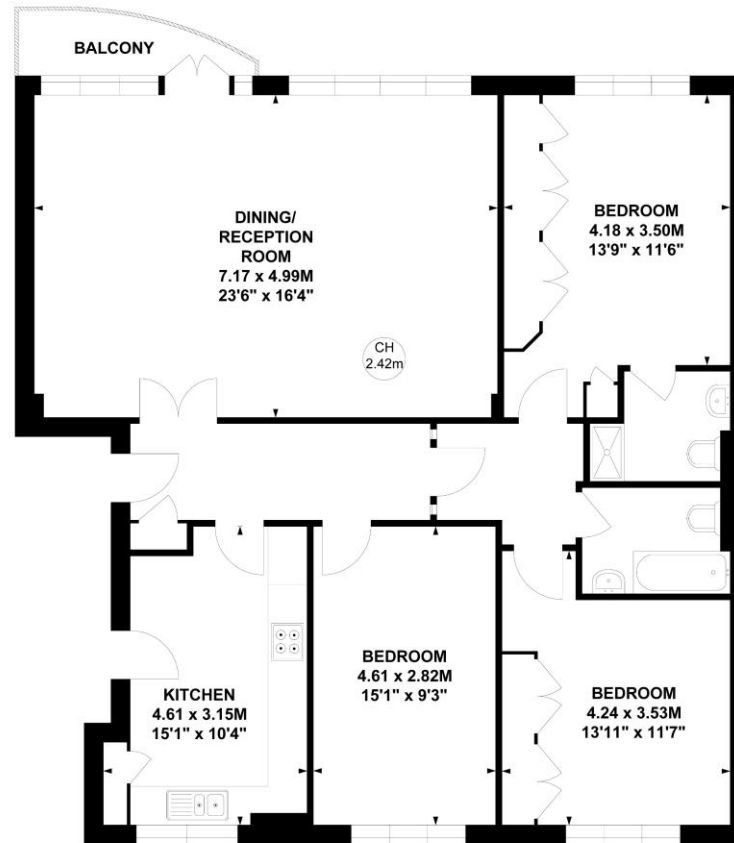
chestertons.co.uk

Kenbrook House, W14

Approximate gross internal area

112.86 sq m / 1215 sq ft

Key :
CH - Ceiling Height



Third Floor

Not to scale, for guidance only and must not be relied upon as a statement of fact.

All measurements and areas are approximate only

Chesterton UK Services Limited trading as Chestertons for themselves and for the vendor of this property whose agents they are, give notice that (i) these particulars do not constitute any part of an offer or contract, (ii) all statements contained within these particulars are made without responsibility on the part of Chestertons or the vendor, (iii) whilst made in good faith, none of the statements contained within these particulars are to be relied upon as a statement or representation of fact, (iv) any intending purchasers must satisfy themselves by inspection or otherwise as to the correctness of each of the statements contained within these particulars, (v) the vendor does not make or give either Chestertons or any person in their employment any authority to make or give representation or warranty whatsoever in relation to this property. Wide angle lenses may be used. ©Copyright Chestertons | Chesterton UK Services Limited | Registered Office 40 Connaught Street, Hyde Park, London W2 2AB Registered Company Number 05334580.



This paper is
100% recyclable