



15 Westdale Lane, Carlton – NG4 3JF

Guide Price **£230,000**



15 Westdale Lane

Carlton, Nottingham

Stylishly-presented 3 bed mid-terraced home close to Gedling's amenities! Modern dining kitchen, lounge, upgraded bathroom and a southerly-facing garden plus driveway parking to the front.

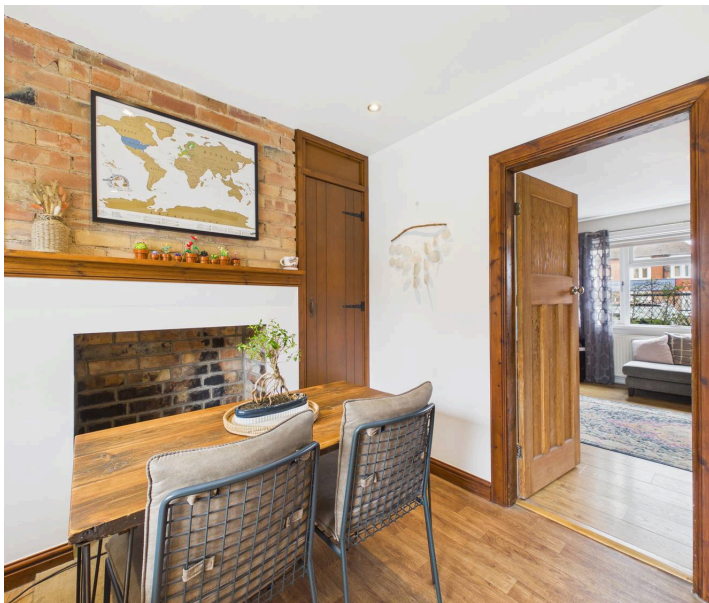
Council Tax band: A

Tenure: Freehold

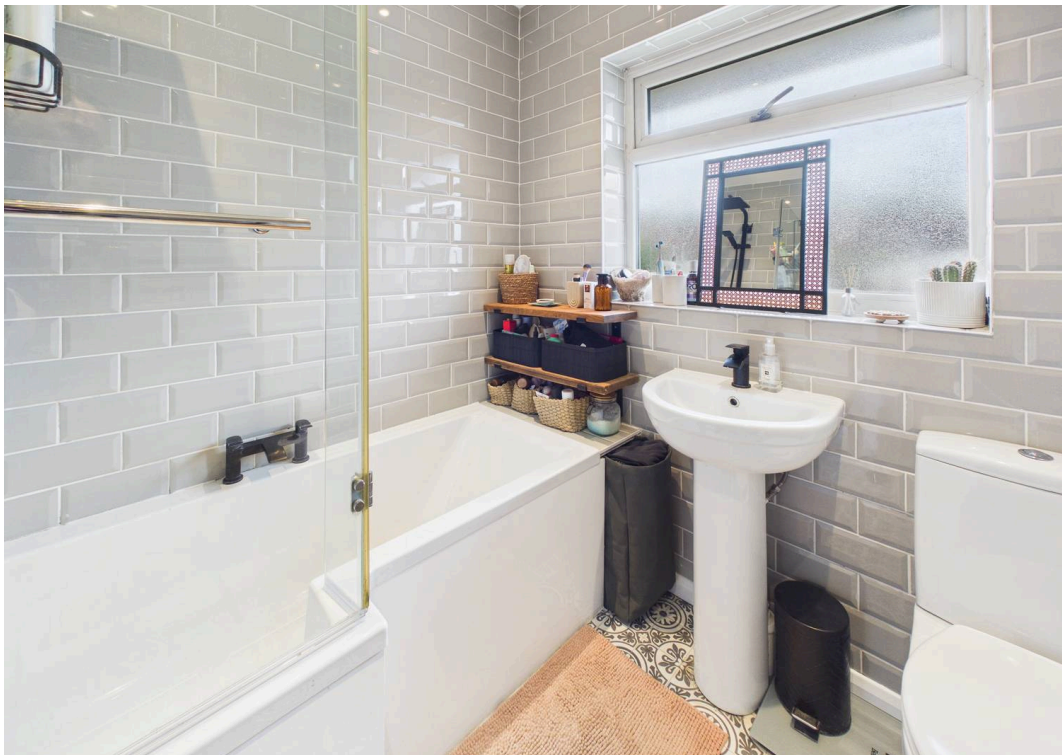
EPC Energy Efficiency Rating: C

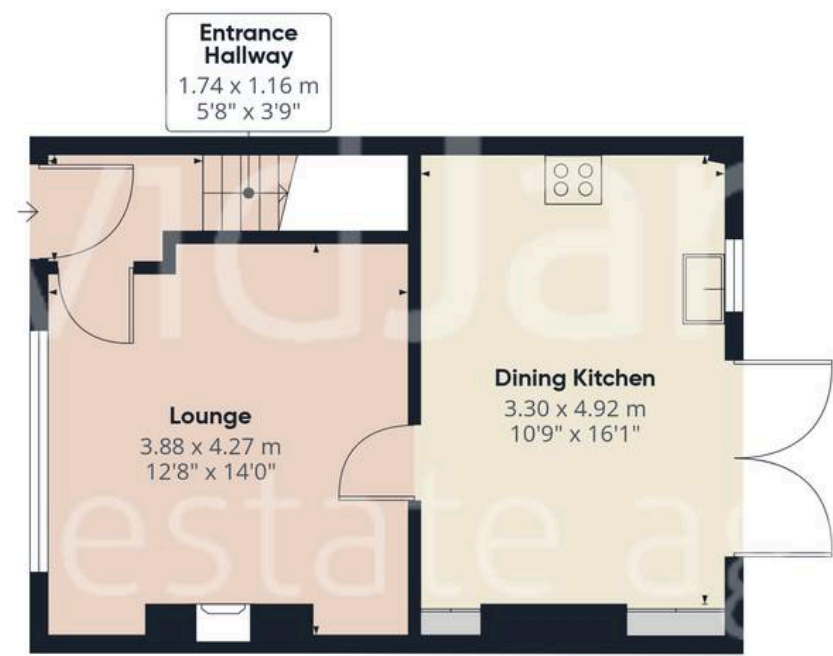
EPC Environmental Impact Rating:

- Stylishly presented mid-terraced home
- Conveniently positioned close to Gedling's amenities, nearby schools and transport links
- Well-suited to a variety of buyers including growing families and first-time purchasers
- Bright lounge with a feature fireplace and wood-finish flooring offers a relaxing living space
- Superb open-plan dining kitchen with French doors to the garden
- Three bedrooms (including two generous doubles)
- Upgraded bathroom with a white three-piece suite including a rainfall shower and contemporary matt black fittings
- Combi boiler added under current ownership improving overall efficiency
- Landscaped and southerly-facing rear garden with a paved seating area leading to artificial lawn
- Driveway providing convenient off-street parking to the front of the property









Floor 0

Approximate total area⁽¹⁾
70.3 m²
757 ft²



Floor 1



(1) Excluding balconies and terraces

Calculations reference the RICS IPMS 3C standard. Measurements are approximate and not to scale. This floor plan is intended for illustration only.



David James Estate Agents

376 Carlton Hill, Carlton - NG4 1JA

0115 987 8957 • carlton@david-james.com • www.david-james.com

These particulars are produced in good faith and are set out as a general guide only. Measurements are approximate and floor plans are for illustrative purposes only. Services have not been tested. We have established professional relationships with third-party suppliers for the provision of services to Clients, details of which can be found on the property listing page on our website.