

**Churchills**

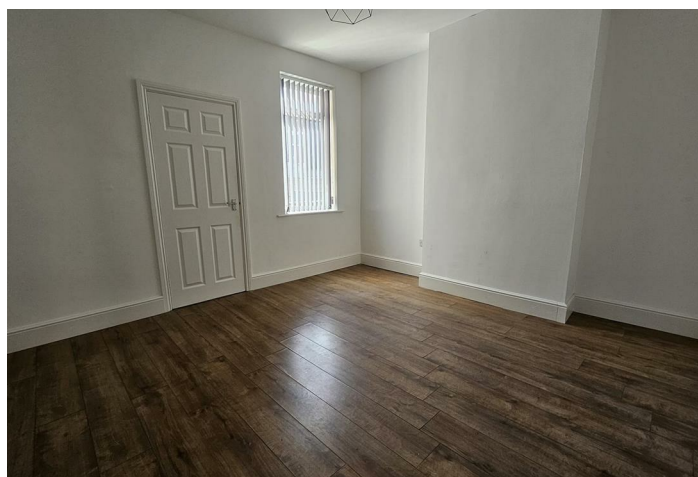


## Avenue Road

Wath-Upon-Deerne, Rotherham S63 7AG

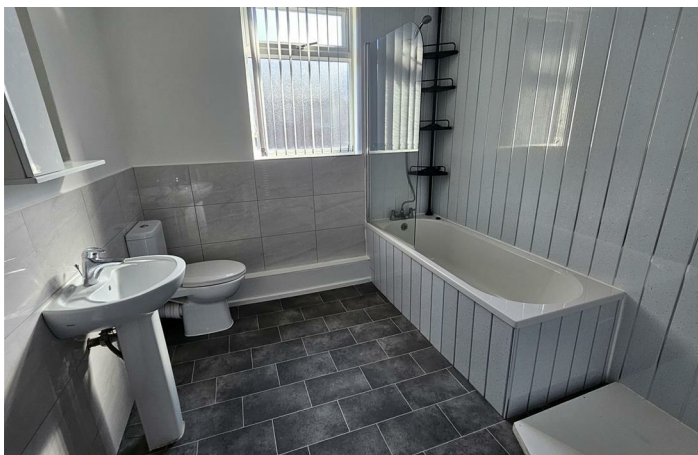
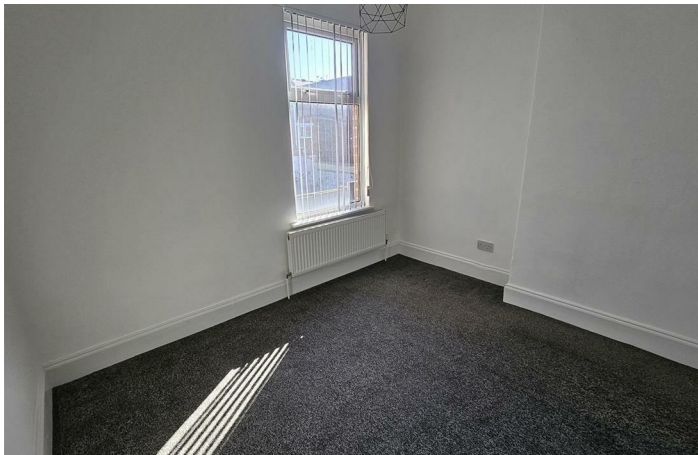
- STONE FRONTED END TERRACE
  - THREE BEDROOMS
- MODERN KITCHEN & BATHROOM
  - GOOD LOCATION
- TWO RECEPTION ROOMS
  - SPACIOUS LIVING
  - REAR GARDEN AREA
  - EPC RATING E

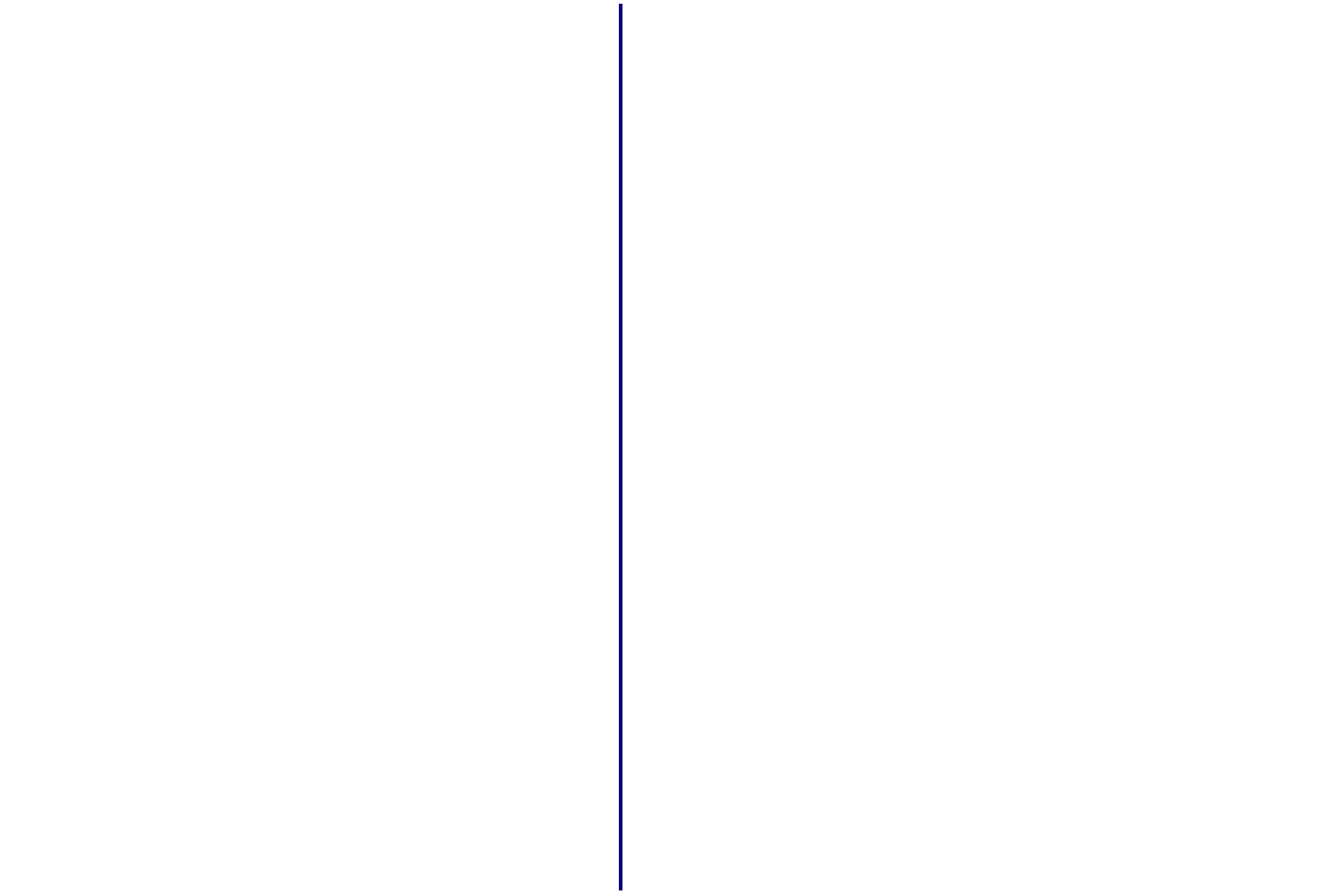
**£725 PCM**





Location





**Local Authority Rotherham**  
**Council Tax Band A**  
**EPC Rating E**



**Churchills Lettings Office**

16 High Street, Mexborough, South  
Yorkshire, S64 9AS

**Contact**

01709 582880  
[Info@churchillsestateagents.com](mailto:Info@churchillsestateagents.com)  
[www.churchillsestateagents.com](http://www.churchillsestateagents.com)

Agents Note: Whilst every care has been taken to prepare these particulars, they are for guidance purposes only. All measurements are approximate and for general guidance purposes only and whilst every care has been taken to ensure accuracy, they should not be relied upon and potential buyers/tenants are advised to recheck the measurements.