



22 Fraser Drive, Lochgelly - KY5 9LS

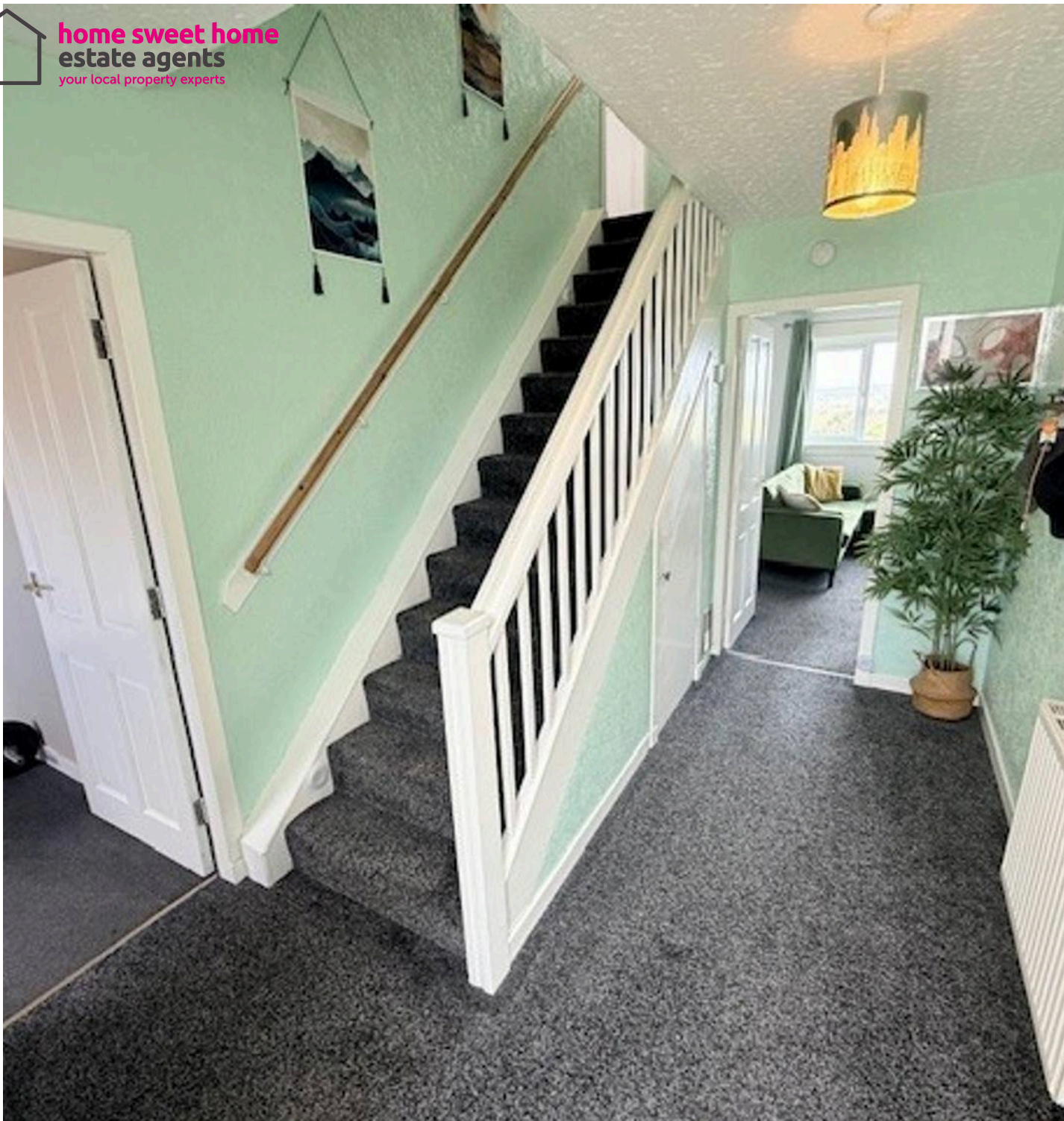
Lochgelly

Offers Over £105,000





home sweet home
estate agents
your local property experts



22 Fraser Drive

Lochgelly, Lochgelly

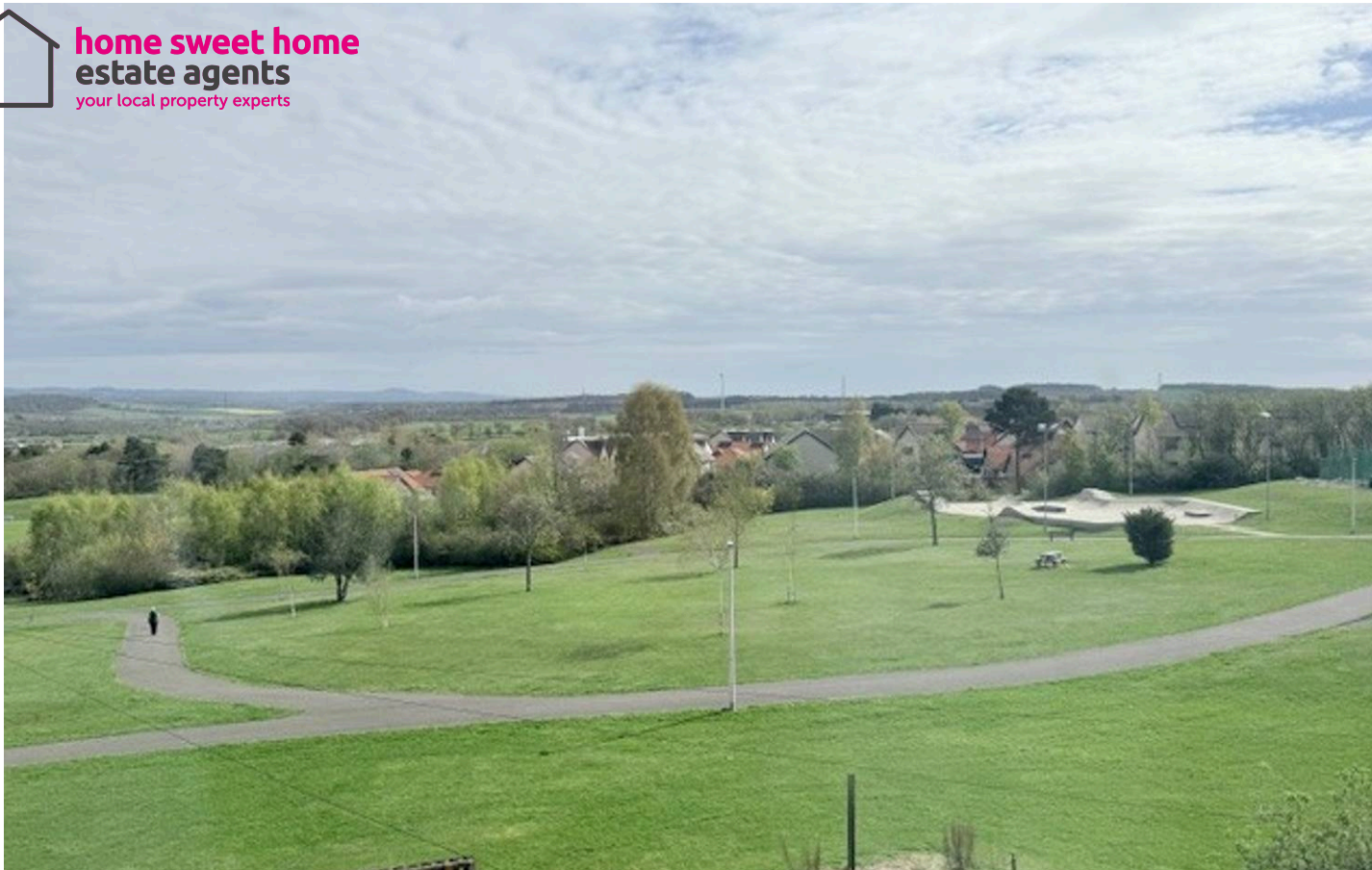
New for sale a deceptively spacious Maisonette Flat with open aspects to rear over countryside/ park ideally suited to a First Time Buyer. Award Winning Home Sweet Home Estate Agents Fife are pleased to offer for sale the perfect starter home comprising Entrance Porch - Entrance Hall - Lounge - Open Plan Kitchen/ Diner - Three Double Bedrooms - Bathroom. Benefitting from DG- GCH - EPC C - HOME REPORT £115,000. Externally rear garden & shed. View Now! Council Tax band: B

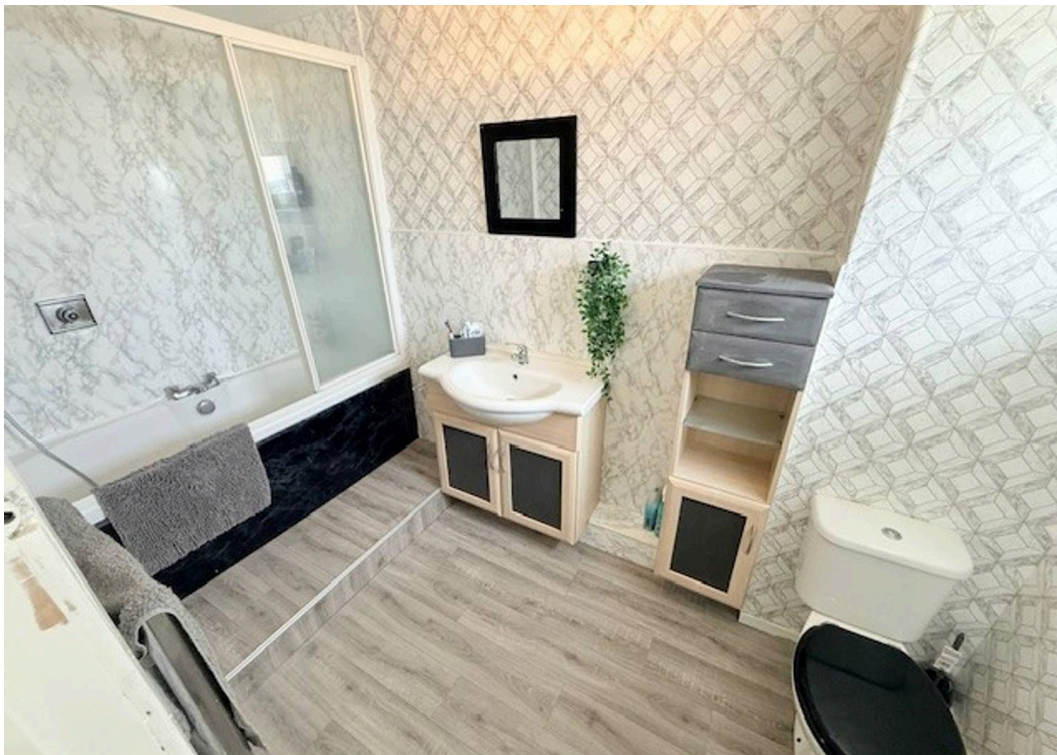
Tenure: Freehold

EPC Energy Efficiency Rating: C

EPC Environmental Impact Rating: C

- SPACIOUS MAISONETTE IN CUL DE SAC & VIEWS
- BRIGHT LOUNGE - KITCHEN/ DINER
- THREE DOUBLE BEDROOMS
- BATHROOM/WC
- DG- GCH - EPC C
- HOME REPORT £115,000
- PERFECT STARTER HOME
- OPEN COUNTRYSIDE ASPECTS
- VIEW NOW!

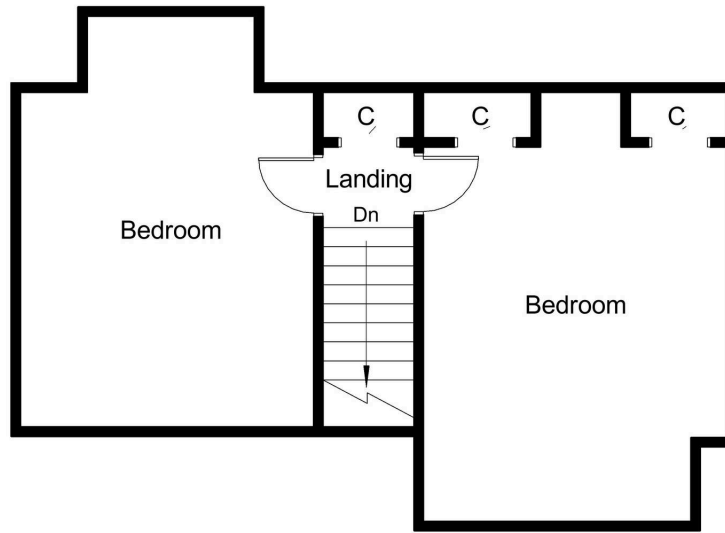




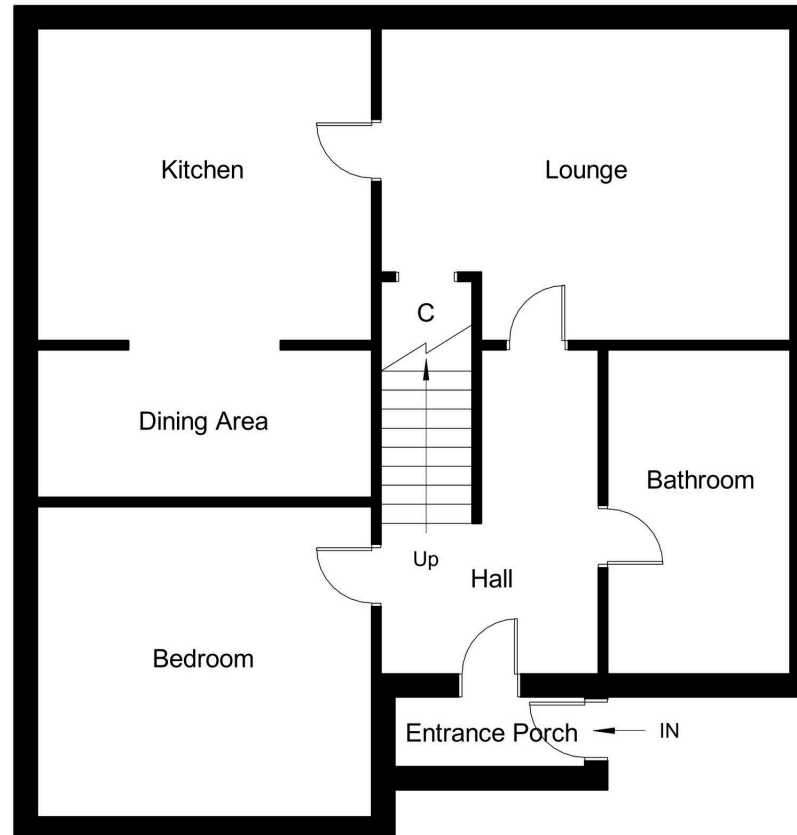
Energy Efficiency Rating		Current	Potential
<i>Very energy efficient - lower running costs</i>			
(92+)	A		
(81-91)	B		
(69-80)	C	72	72
(55-68)	D		
(39-54)	E		
(21-38)	F		
(1-20)	G		
<i>Not energy efficient - higher running costs</i>			
England, Scotland & Wales		EU Directive 2002/91/EC	

Environmental Impact (CO ₂) Rating		Current	Potential
<i>Very environmentally friendly - lower CO₂ emissions</i>			
(92+)	A		
(81-91)	B		
(69-80)	C	75	75
(55-68)	D		
(39-54)	E		
(21-38)	F		
(1-20)	G		
<i>Not environmentally friendly - higher CO₂ emissions</i>			
England, Scotland & Wales		EU Directive 2002/91/EC	

Attic Floor



First Floor



home sweet home
estate agents
your local property experts