



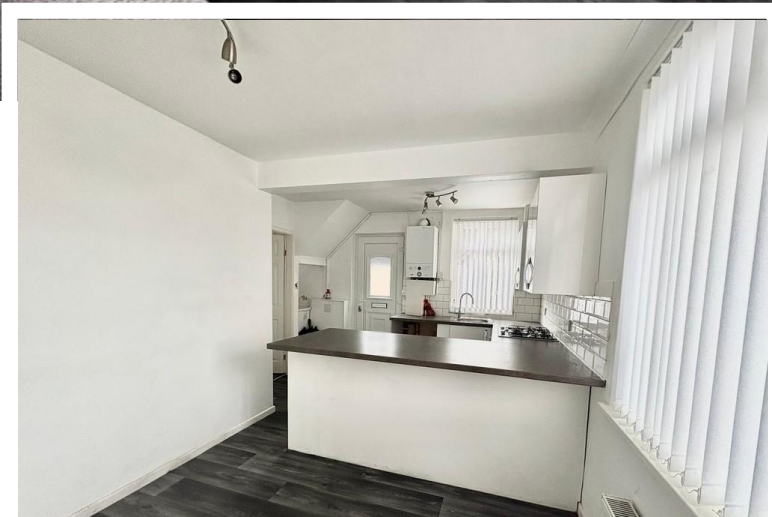
20 Westminster Gardens

Clayton, Bradford, BD14 6SN

- THREE BEDROOM SEMI DETACHED
- CLOSE TO LOCAL AMENITIES
- DINING KITCHEN
- POPULAR LOCATION

£1,200 pcm
EPC Rating 'TBC'





Property Description

DIRECTIONS:

PURCHASE DETAILS:

Please note that the services & appliances have not been tested & the property is sold on that basis.

Once you are interested in purchasing this property, ideally call in person or telephone this office to discuss your offer, we would suggest that this is done before contacting a bank, building society or solicitor as any delay could result in the property being sold to someone else and any survey and legal fees being



unnecessarily incurred.

VALUATION: If you are thinking of selling your home, why not contact one of our offices now for a FREE VALUATION strictly without any obligation. Contact us on Bradford (01274) 880019.

MORTGAGES: A full range of mortgage facilities are available subject to status. Our Financial Consultant will be only too happy to discuss with you your individual requirements. Please contact us for FREE & CONFIDENTIAL ADVICE.



RENT-A-HOUSE: Thinking of renting your HOUSE? FLAT? Contact (01274) 880019 for further details.







%epcGraph_c_1_200%