



**Merton Lane, N6**

**£2,750,000**

**Dexters**



## Merton Lane, N6

A superb four bedroom detached house with two bathrooms in this sought after and idyllic location, discreetly set back and with a secluded and sunny mature garden.

With Highgate ponds and the heath at the end of the road, this fine detached home forms part of the exclusive West Hill Park development by "Ted Levy, Benjamin and Partners" in the mid 1970's.

Approached via a pretty front garden, there is a good sized entrance hallway with guest WC and cloaks area, a sleek modern fitted kitchen and generous reception areas which have access to the gardens.

On the first floor there are four bedrooms with two bathrooms and one of the bedrooms is interlinked providing further flexibility.

Quietly positioned on this desirable tree-lined street, the property is convenient to reach the local schools, Highgate Village, Swains Lane's café society, Dartmouth Park and transport connections.

### Features

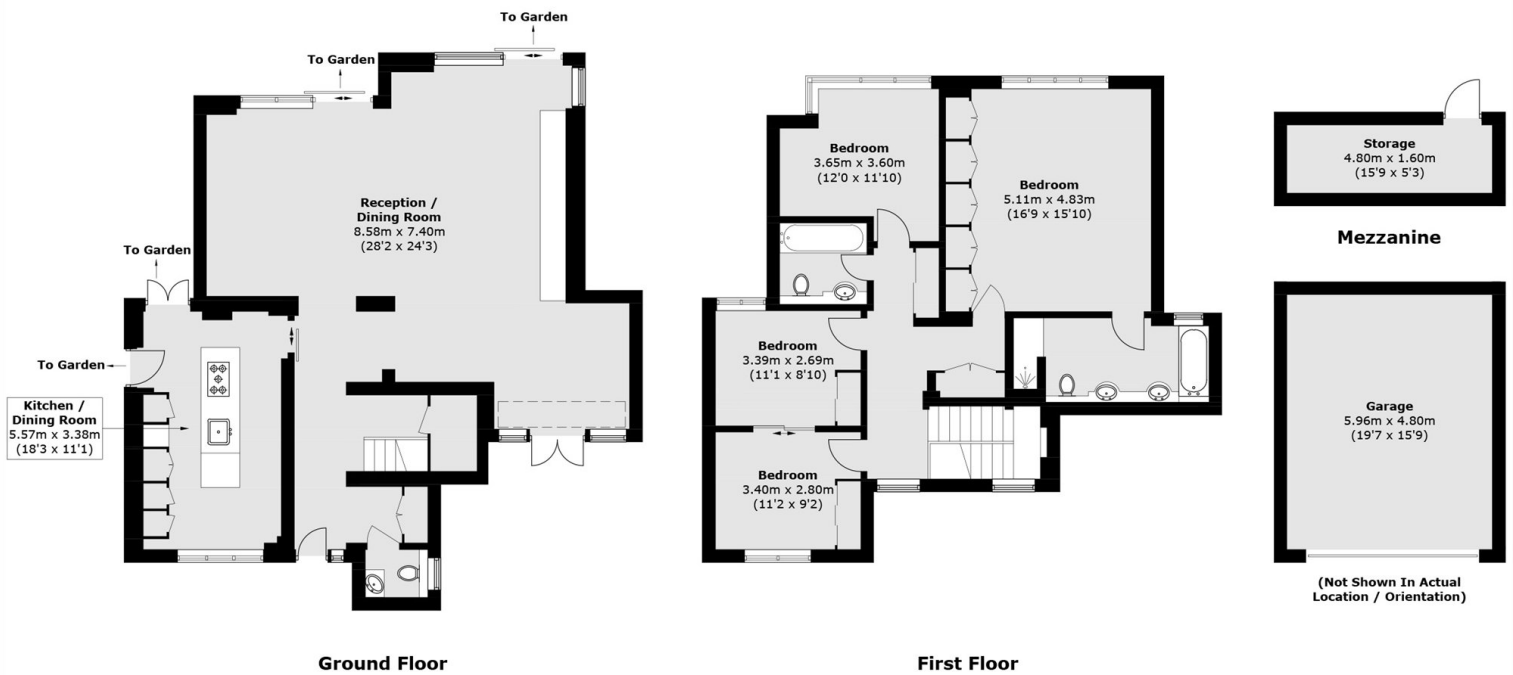
- Detached House
- Double Aspect Reception
- Four Bedrooms
- Two Bathrooms
- Front & Rear Gardens
- Garage







# Merton Lane, London, N6



Total area (approx.): 195.2 sq. m (2,101.1 sq. ft)  
Garage (approx.): 28.6 sq. m (307.8 sq. ft)  
(Including Mezzanine)