



Marvels Lane, SE12

£600,000

Located on the ever-popular Marvels Lane, this beautifully presented three-bedroom family home has been lovingly updated to create a stylish and welcoming home, perfectly suited to modern family living. The elegant front reception room is full of character, featuring a large bay window, wooden flooring and a charming fireplace, while the stunning kitchen/dining room has been finished to an exceptional standard with sleek contemporary units, quality worktops and integrated appliances. Thoughtfully designed with both practicality and entertaining in mind, the space is flooded with natural light and overlooks the beautifully landscaped rear garden.

Features

- Turn Key
- Semi Detached
- Landscaped Gardens
- Three Bedrooms
- Excellent Transport Links
- Beautiful Kitchen Diner



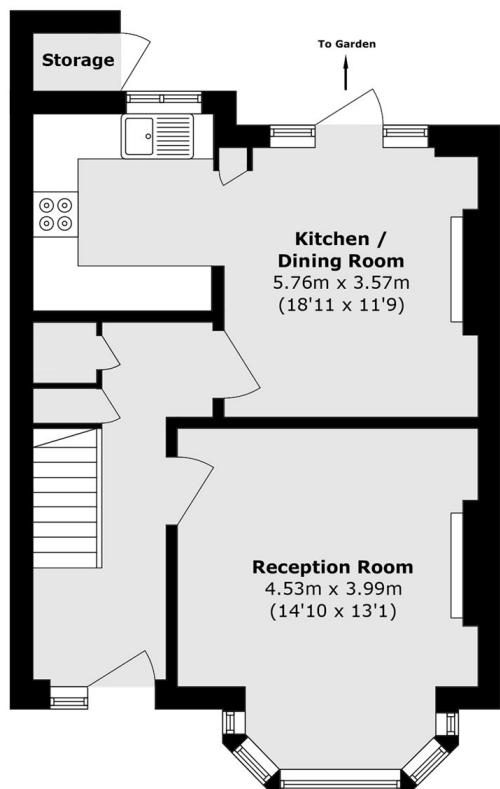
Marvels Lane, SE12

Upstairs are three well-proportioned bedrooms and a beautifully finished family bathroom, all presented in excellent decorative order with a calm, contemporary feel throughout. The landscaped front and rear gardens have been carefully designed to provide attractive, low-maintenance outdoor space, ideal for relaxing, entertaining and family life.

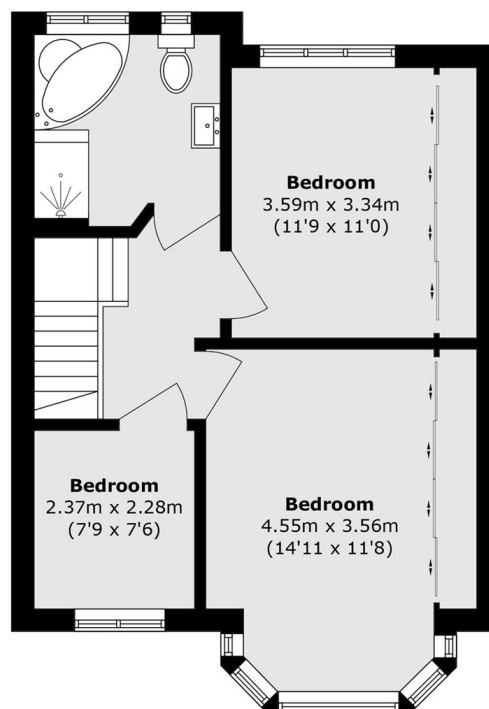
Conveniently located on Marvels Lane, this property is just 0.5 miles from Grove Park Station, offering excellent transport links into London Bridge in as little as 15 minutes. A wide range of local amenities are close at hand, including shops, the Bannatyne Health Club & Spa, and the open green spaces of Chinbrook Meadows making this an ideal location for both convenience and lifestyle.



Marvels Lane, London, SE12



Ground Floor



First Floor

Total area (approx.): 91.9 sq. m (989.2 sq. ft)

External Storage area (approx.): 0.6 sq. m (6.4 sq. ft)