



GUIDE PRICE OF £350,000 - £360,000

Daccabridge Road,
Kingskerswell, Newton
Abbot, TQ12 5DQ

Nestled in the heart of the picturesque village of Kingskerswell, cottage is a beautifully presented home oozing with charm and character. On entering the property you are instantly charmed by the feature fireplace and beamed ceilings the property comprises of a delightful lounge area, dining room and utility room, kitchen and a downstairs double bedroom. Upstairs are two double bedrooms and a family bathroom, outside accessed from the kitchen is a lovely garden with large patio and lawned area, further large garden at the front of the property, along with parking for 3/4 cars. Viewing is highly recommended.



uPVC door into:-

PORCH Door into:-

LOUNGE Very grand brick feature fireplace with chimney, beamed ceilings and adding rustic charm, open staircase, window to front and radiator. Wooden door into:-

BEDROOM THREE A double bedroom with window to back, beamed ceiling, window out to back and radiator.

DINING ROOM A large dining room with space for six seater dining table. Windows and door out to main garden. Radiator.

KITCHEN Wooden fitted kitchen with cupboards and drawers over and under surfaces, space for cooker and space for fridge/freezer. French doors lead out to the main garden.

UTILITY Plumbing for washing machine and dryer, cupboard door into:-

DOWNSTAIRS SHOWER ROOM Cubicle shower unit with glass door, low level WC and hand wash basin.

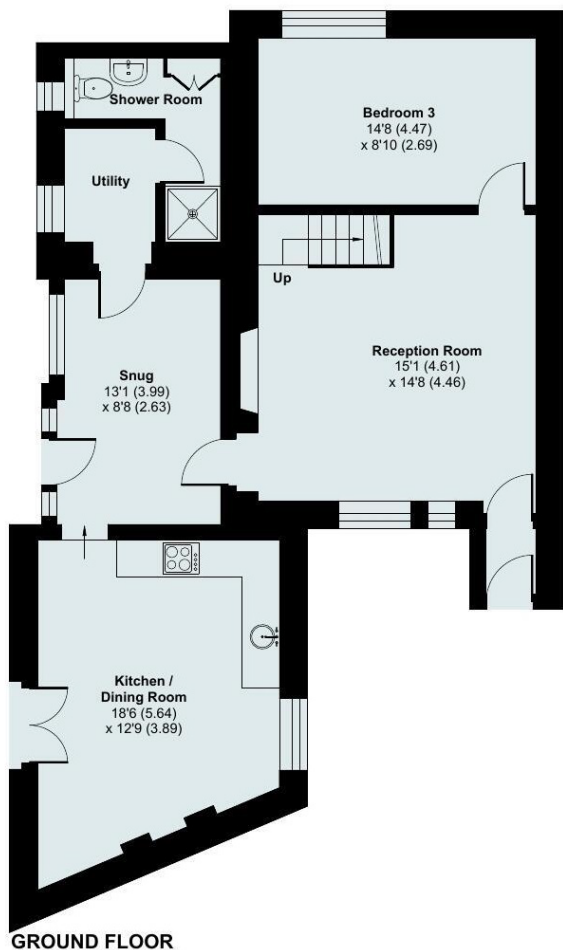
BEDROOM ONE A double bedroom with window to back, beamed ceilings and radiator.

BEDROOM TWO Another double bedroom with window to front overlooking the garden, beamed ceilings and radiator.

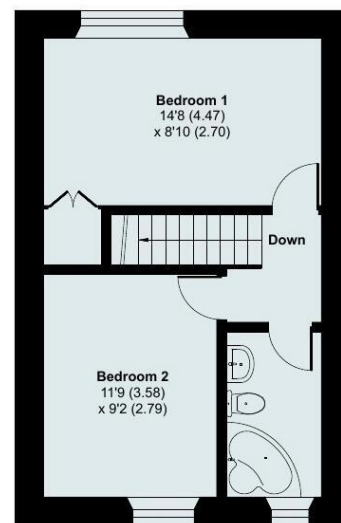
BATHROOM Comprising of white corner bathroom, low level w/c and washbasin, radiator and window to front.

OUTSIDE The property benefits from having its own private sunny garden with a large patio and lawned area, at the front of the property are further large gardens.

PARKING There is ample parking for 3/4 cars.



GROUND FLOOR



FIRST FLOOR

Address 'Daccabridge Road, Kingskerswell, Newton Abbot, TQ12 5DQ'

Tenure 'Freehold'

Council Tax Band 'D'

EPC Rating '54 | E'

Taylor's Estate Agents
256 Torquay Road
Paignton
TQ3 2EZ