



Lamberton Drive | | Brymbo | LL11 5FQ

Offers in the region of £225,000



ROSE RESIDENTIAL

Lamberton Drive |

Brymbo | LL11 5FQ

Offers in the region of £225,000

A beautifully presented three bedroom semi-detached property located on the highly regarded Mountain View development in Brymbo. The accommodation includes a spacious lounge, modern kitchen/diner and downstairs WC, with the first floor offering three bedrooms (principal with en-suite) and a family bathroom. Externally there is a south-facing rear garden and driveway parking for up to three vehicles.

Entrance & Hallway

A part glazed front door opens into the entrance hall, featuring tiled flooring and doors leading off to the kitchen, lounge & W/C.

Kitchen

10'9" x 8'7" (3.28m x 2.64m)

A beautifully designed room which also offers space for a dining table. There is a range of fitted base and wall units with complimentary work surfaces over and an inset stainless steel sink with mixer tap. Integrated appliances include a fridge/freezer, dishwasher, washing machine, electric oven and gas hob, extractor hood, and an Ideal boiler neatly housed within a cupboard. The room also benefits from a large front facing UPVC double glazed window which floods the room with natural light, tiled flooring and radiator.





Lounge

16'0" x 13'10" (4.89m x 4.22m)

A bright and inviting reception room featuring rear facing UPVC double glazed patio doors opening onto the garden. Additional features include a useful understairs storage cupboard, rear facing UPVC double glazed window, radiator, and fitted carpet.

Downstairs W/C

Featuring a front facing UPVC double glazed window with privacy glass, the room is fitted with a low level WC, pedestal wash basin, and radiator.

Stairs and Landing

A carpeted, turning staircase ascends from the hallway to a generous landing. The space feels open and airy, with doors leading to the bedrooms, bathroom, and a handy storage cupboard.

Bedroom One

9'3" x 9'10" (2.83m x 3.02m)

With UPVC double glazed window to the rear, radiator and fitted carpet. There is also a fitted wardrobe and door which opens into the en-suite shower room.

En-Suite Shower Room

Fitted with a walk in shower cubicle with mains fed mixer shower, pedestal wash hand basin, and WC.

Bedroom Two

9'3" x 9'8" (2.82m x 2.97m)

Currently used as a home office, this second bedroom is another double bedroom with front facing UPVC double glazed window, radiator and fitted carpet.

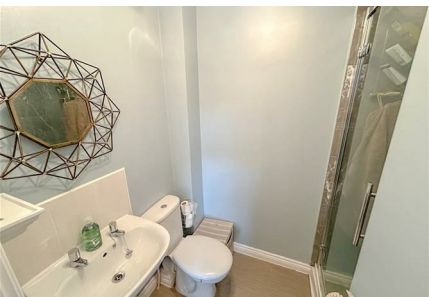
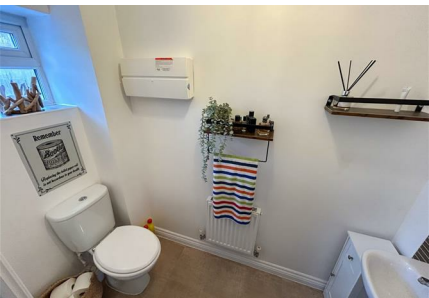
Bedroom Three

6'8" x 6'6" (2.04m x 1.99m)

The smallest of the three bedrooms with a rear facing UPVC double glazed window, radiator and fitted carpet.

Family Bathroom

Fitted with a three piece suite comprising of panelled bath with mains fed shower over and glazed shower screen, pedestal wash hand basin and low level w/c. There is a front facing UPVC double glazed window with privacy glass, radiator and partly tiled walls.





External

The garden is a real asset to the property - both south-facing and not immediately overlooked by neighbouring windows. Fully enclosed by fencing, it offers a decked seating area immediately outside the lounge patio doors with a lawned area beyond. A rear pedestrian gate provides access to the driveway, which offers parking for up to three cars.

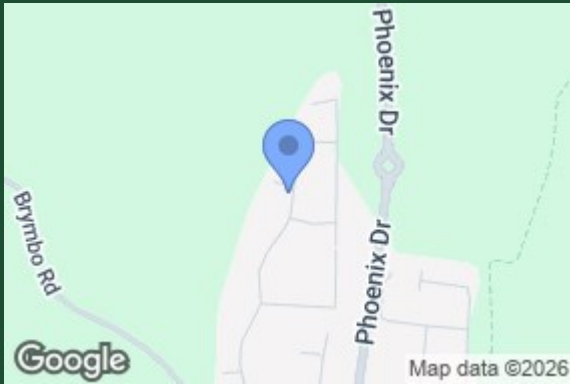
Disclaimer

The information provided on this property listing, including but not limited to descriptions, photographs, measurements, and pricing, is for informational purposes only. While all reasonable efforts have been made to ensure the accuracy of this information, the owner, agent, or company assumes no responsibility for any errors or omissions, and it is subject to change without notice.

All prospective buyers or tenants are strongly advised to verify any details and conduct their own due diligence before making any decisions. The property may be subject to changes in zoning, laws, or other factors that could impact its use or value. Additionally, the property is sold or leased "as-is" and may not be in perfect condition. By proceeding with any engagement with this property, you acknowledge that you have read, understood, and accepted these terms.

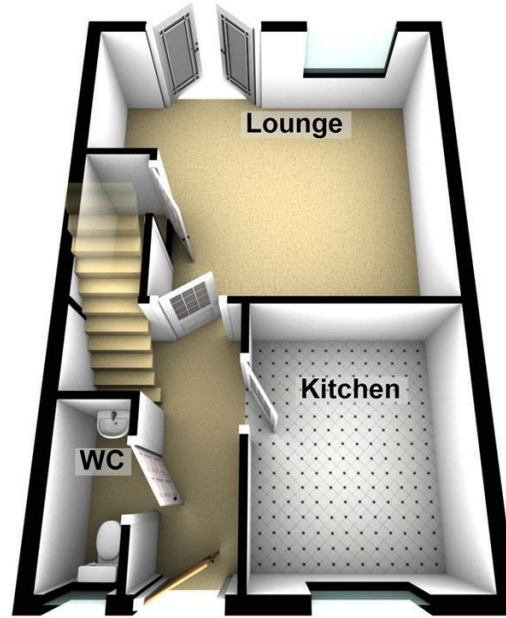
Anti Money Laundering (AML) Checks

We are required by law to carry out anti money laundering (AML) checks on all purchasers of property. Whilst we remain responsible for ensuring these checks and any ongoing monitoring are completed correctly, the initial checks are undertaken on our behalf by Lifetime Legal. Once your offer has been accepted, Lifetime Legal will contact you to complete the necessary verification. The cost of these checks is £60 (including VAT), which covers the cost of obtaining relevant data, as well as any manual checks and monitoring that may be required. This fee must be paid directly to Lifetime Legal before we can issue a memorandum of sale, and it is non-refundable.



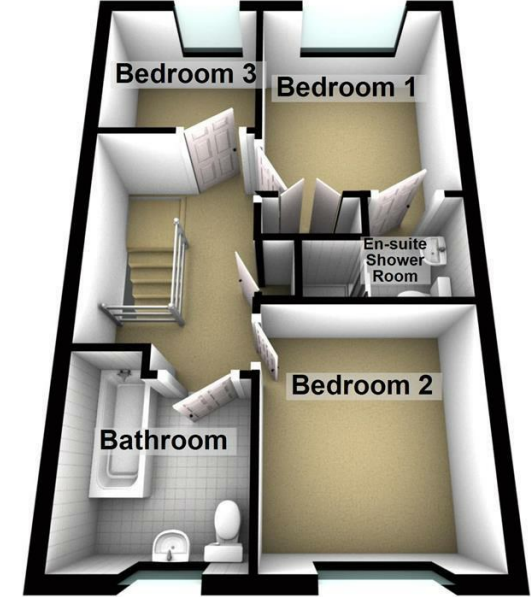
Ground Floor

Approx. 37.4 sq. metres (402.3 sq. feet)



First Floor

Approx. 37.1 sq. metres (399.7 sq. feet)



Total area: approx. 74.5 sq. metres (801.9 sq. feet)

Energy Efficiency Rating		Current	Potential
Very energy efficient - lower running costs			
(92 plus) A			
(81-91) B			
(69-80) C		78	83
(55-68) D			
(39-54) E			
(21-38) F			
(1-20) G			
Not energy efficient - higher running costs			
England & Wales		EU Directive 2002/91/EC	

Wrexham

01978 504001
 sales@rose-residential.co.uk