



Orchard Gardens, Purton – SN5 4EJ
Wiltshire

Guide Price **£575,000**
mcfarlane
property.com

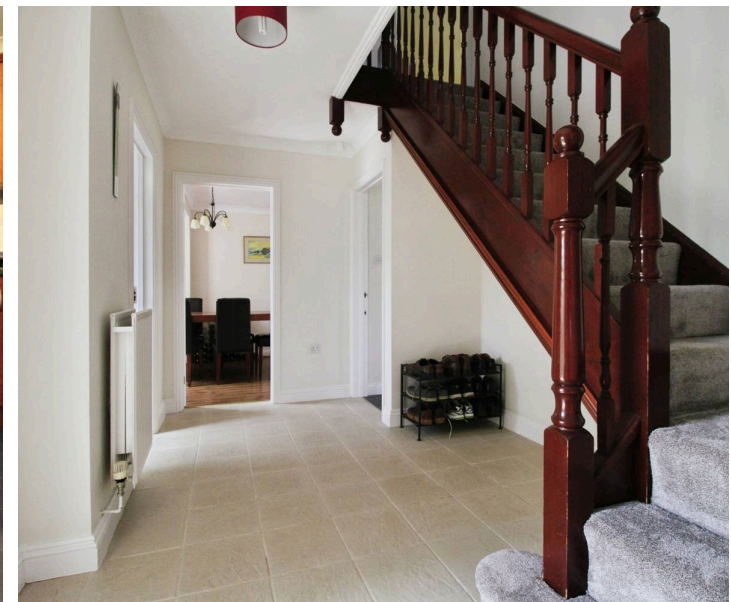
Orchard Gardens

Purton, Wiltshire

- **NO ONWARD CHAIN**
- Detached FOUR BEDROOM Family Home
- Modernised and Recently Updated
- Generous Corner Plot with Detached Double Garage
- Three Reception Rooms
- Master Bedroom with En-Suite PLUS BALCONY
- Generous Driveway and Parking
- Generous Enclosed Mature Gardens to Side and Rear

A well presented and improved FOUR bedroom detached home in a sought after Purton position. This well presented family home has been recently redecorated and updated and as a result offers a bright and airy feel throughout with versatile accommodation. With NO ONWARD CHAIN.

This delightful home occupies a generous corner plot with mature gardens and a detached double garage with additional garden space beyond. There is also a family sized driveway with off road parking for multiple cars.



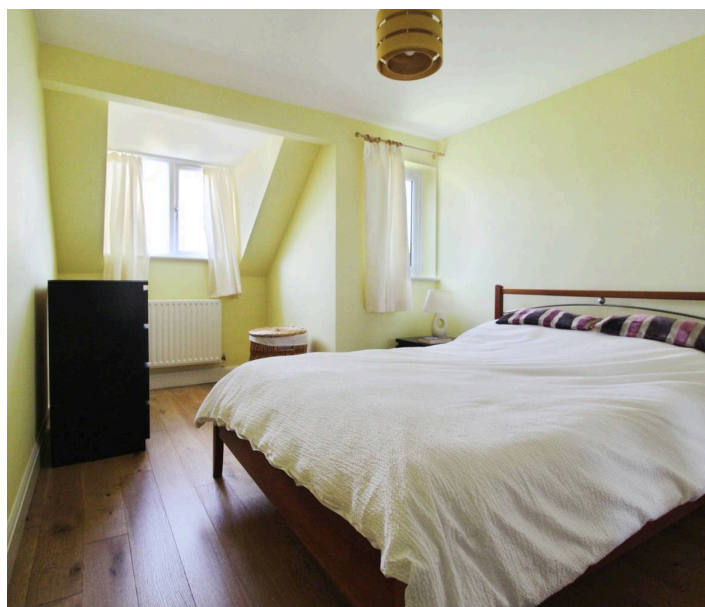
Orchard Gardens

Purton, Wiltshire

Purton is a larger village in Wiltshire located about 4 miles from the centre of Swindon. The capital of the Cotswold's Cirencester lies approximately 12.5 miles to the north with both market towns offering considerable amenities and shopping opportunities. Purton boasts a spirited community with schooling and sports and social clubs.

Council Tax band: F

Tenure: Freehold

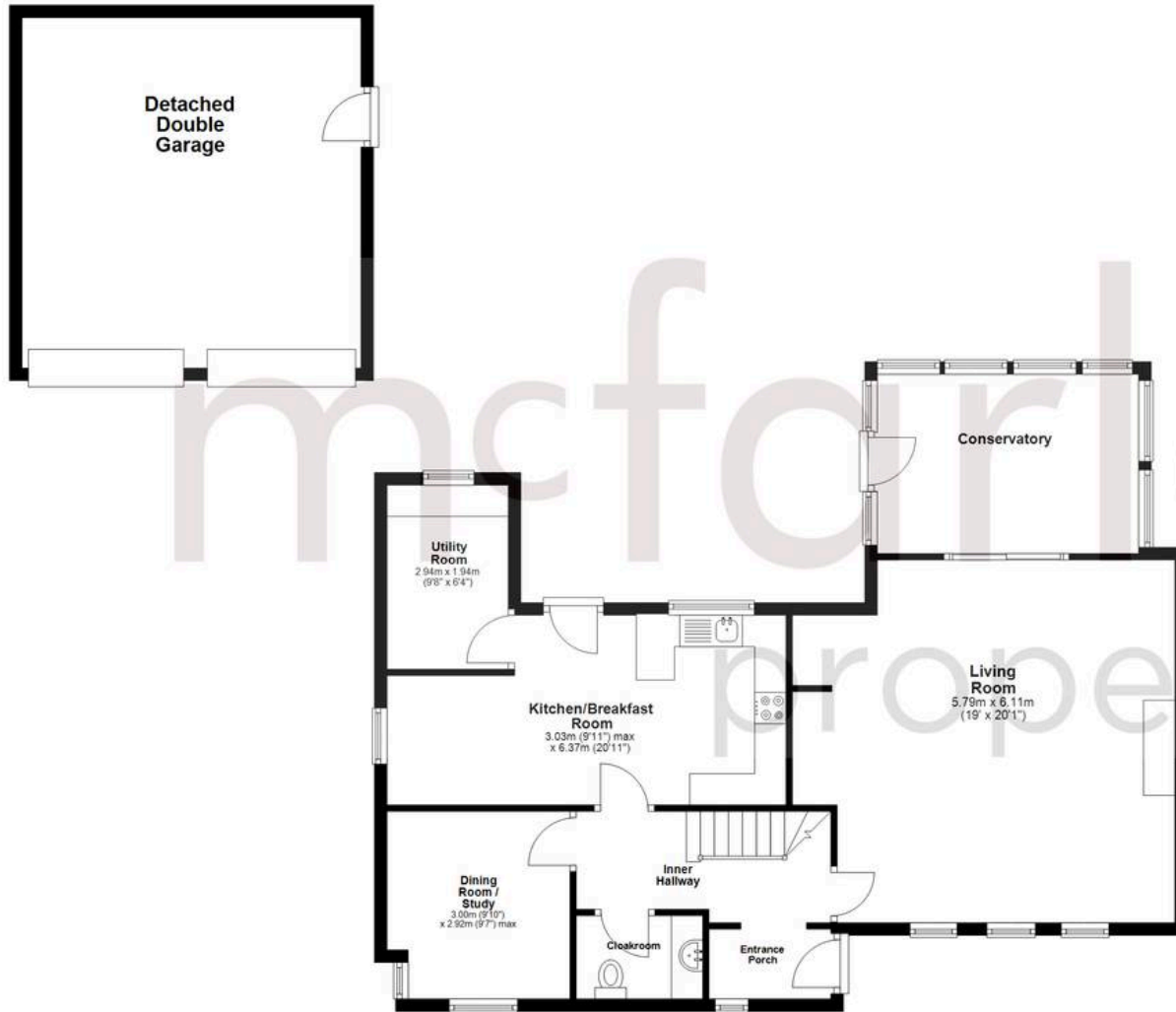


mcfarlane
property.com

Agents Note: Whilst every care has been taken to prepare these sales particulars, they are for guidance purposes only. All measurements are approximate are for general guidance purposes only and whilst every care has been taken to ensure their accuracy, they should not be relied upon and potential buyers are advised to recheck the measurements.

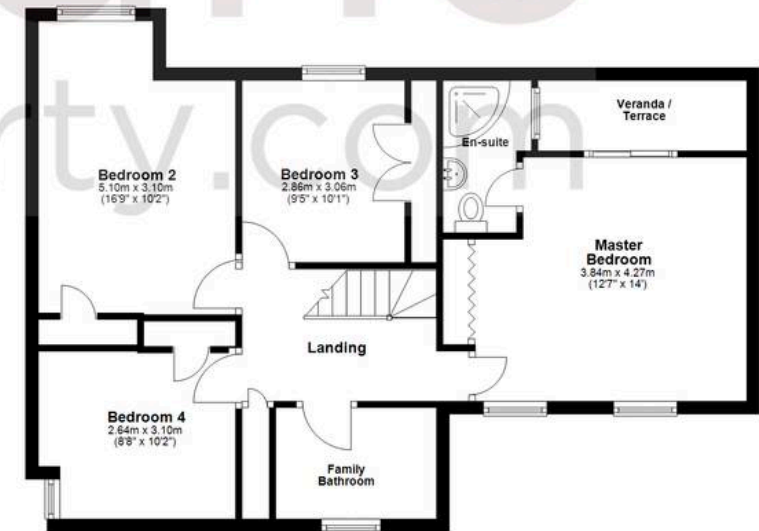
Ground Floor

Approx. 121.0 sq. metres (1302.7 sq. feet)



First Floor

Approx. 69.3 sq. metres (745.6 sq. feet)



Total area: approx. 190.3 sq. metres (2048.2 sq. feet)