



www.jeffreygross.co.uk

CARDIFF

VALE

CAERPHILLY

BRISTOL



Hewell Street



Cogan has been a highly popular location with young and old. There are some local shops within the immediate vicinity and Tesco Superstore a 5 minute walk away. With good transport links to include a reliable bus service at hand and Cogan train station plus a short drive leads you to M4 corridor.

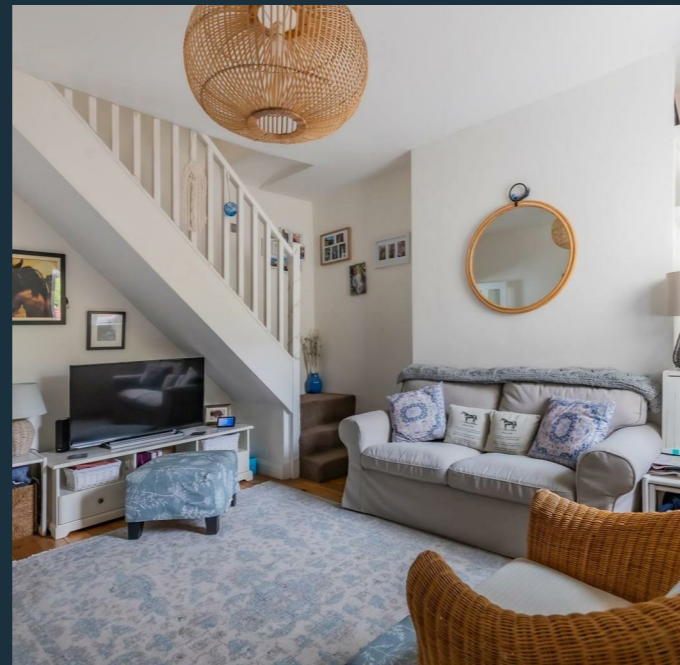
Comments by Mr Paul Davies



Property Specialist
Mr Paul Davies
Property Management Co-ordinator
paul.davies@jeffreycross.co.uk



Comments by the Homeowner





Hewell Street

, Penarth, CF64 2JZ

£265,000



3 Bedroom(s)



1 Bathroom(s)



861.00 sq ft



Contact our
Penarth Branch

02920415161

Located upon this popular side road within the ever sought after community of Cogan. A short walk/drive takes you into the town center. Within the immediate location are local shops, Tesco supermarket, Cogan train station and Penarth Leisure Center. This extended mid terrace and beautifully presented would make for a great home.

Briefly comprising an entrance porch, dining room, spacious lounge, modern kitchen - oak worktop with built in oven, hob & hood with rear lobby and stylish shower room. To the first floor there are 3 generous bedrooms (2 doubles).

Complimented with upvc double glazing and gas central heating. Catchment for the popular Cogan Primary & St. Cyres Secondary Schools.

Enclosed rear garden.

Viewing highly recommended.



Porch

Dining Room 12'7" max x 9'8" (3.84m max x 2.95m)

Window to front, oak flooring, 2 built in cupboards.

Lounge 13'6" max x 13'1" (4.11m max x 3.99m)

Generous main living room, window to rear, TV point, stairs rise to the first floor, oak flooring.

Kitchen 9'7" x 7'4" (2.92m x 2.24m)

Fitted wall and base units with solid oak worktops and inset stainless steel sink & drainer with mixer tap, plumbed washing machine & dishwasher, space for fridge/freezer, built in oven, hob & hood, window to side, wall mounted gas boiler.

Lobby

Door to the rear garden.

Shower Room

Modern white suite - tiled surround, double cubicle, vanity wash hand basin and close coupled wc - concealed cistern, extractor fan, 2 windows to rear.

First Floor Landing

Access to a part boarded loft via a retractable wooden slingsby ladder with light.

Bedroom 1 12'8" max x 9'9" (3.86m max x 2.97m)

Master double bedroom, 2 windows to front, 2 fitted wardrobes with over head cupboards, laminate flooring.

Bedroom 2 10'6" max x 10'2" (3.20m max x 3.10m)

Double bedroom, window to rear, laminate flooring, double cupboard over the stairs.

Bedroom 3 9'9" x 7'7" (2.97m x 2.31m)

Double bedroom, laminate flooring, window to rear.

Garden

Enclosed rear garden - boundary wall and fencing, paved, outside tap, 6' X 6' garden galvanised shed

Information

We believe the property is Freehold.
Council Banding - Band D £2,261.18 (2026-2027)



