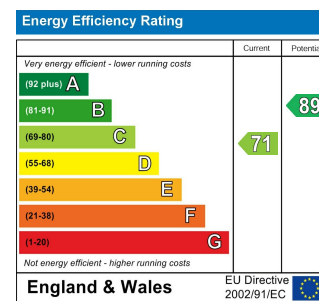
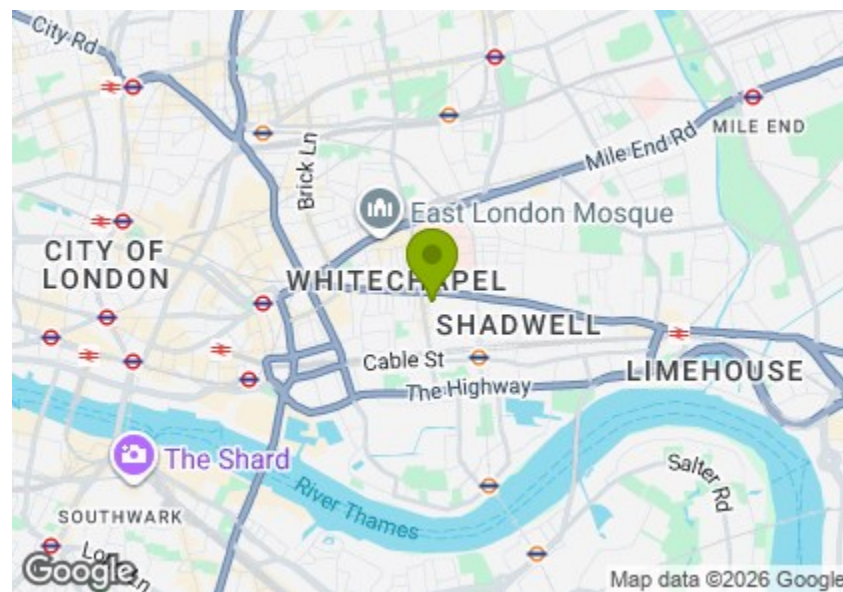




Total Area: 117.3 m² ... 1262 ft² (excluding terrace rooftop)
All measurements are approximate and for display purposes only



RAMPART STREET, TOWER HAMLETS

Offers In Excess Of £1,100,000 Freehold

3 Bed House - Townhouse



Features:

- Three Bedroom House
- Two Bathrooms
- Cloakroom on the Ground Floor
- Over 1260 sq.ft
- Private Rooftop Terrace
- Moments Away from Shadwell Overground Station
- Moments Away from Aldgate & Whitechapel Station
- Chain Free

A bright and unique three-bedroom home set across three storeys, nestled comfortably between Whitechapel and Shadwell, meaning excellent eateries and transport links right on the doorstep.

Along with its spacious layout, you'll enjoy two bathrooms and a WC, a master suite with dressing room, a private roof terrace, plenty of natural light, ample storage. You'll be just as happy staying in as exploring this fantastic postcode.

REQUEST A VIEWING
0208 520 3077

E11, E7, E12 & E15
hello11@stowbrothers.com
0203 397 2222

E4 & N17
hello4@stowbrothers.com
0203 369 6444

E17 & E10
hello17@stowbrothers.com
0203 397 9797

E18 & IG8
hello18@stowbrothers.com
0203 369 1818

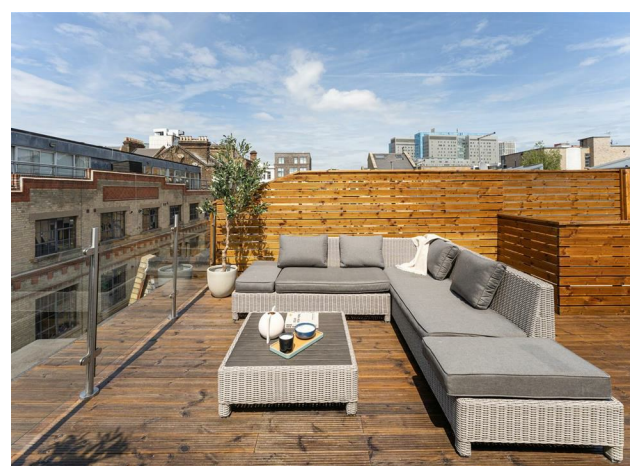
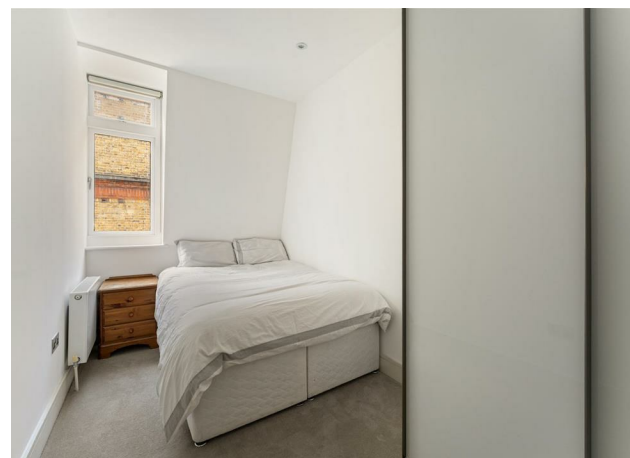
E8, E9, E5, N16, E3 & E2
hellohackney@stowbrothers.com
0208 520 3077

New Homes
newhomes@stowbrothers.com
0203 325 7227

Investment & Development
id@stowbrothers.com
0208 520 6220

Property Maintenance
propertymanagement@stowbrothers.com
0203 325 7228

STOWBROTHERS.COM
@STOWBROTHERS



IF YOU LIVED HERE...

You might already know this buzzing part of East London as a visitor, but living here is a whole new experience, with brilliant attractions right on your doorstep. Alongside known destinations such as Brick Lane, Tobacco Dock and the Whitechapel Gallery, exciting new ventures are constantly emerging, fuelled by the area's youthful, creative energy.

Back at home, you have 1262 square feet to enjoy, including a wonderfully bright open plan reception/kitchen with a generous west-facing window that floods the space with natural light. The kitchen area is sleek and contemporary, complete with ample units and high spec appliances. There's a WC on the first floor, as well as a cloak room.

Head up to the first floor and you'll find your master, complete with both a dressing room and modern ensuite - a real luxury. Meanwhile, the second floor offers two further bedrooms and another stylish bathroom, as well as more storage.

Finally, head up the striking open tread staircase to your stunning private terrace, which will be a point of envy amongst friends during warmer months. It's been conveniently decked, so you can sit back and enjoy the iconic London views.

While this is a fantastic spot for soaking up the sun, you're also close to plenty of green space, including Rope Walk Gardens and St George's Gardens.

Transport is plentiful in this area with some excellent bus routes nearby as well as Shadwell Station just moments away on the DLR and Windrush line. Whitechapel station, which is served by the District, Circle and Hammersmith & City, Elizabeth and Windrush lines, is just a stretch further.

Head north-west for Brick Lane, Spitalfields and Shoreditch's buzzing scene, or wander south to the River Thames and Tower Bridge. Local shops, cafes, and restaurants abound, making this a brilliant base for city living.

WHAT ELSE?

- New local? The White Hart Pub. A lively local on Whitechapel High Street offering craft beers, classic pub grub and a warm, welcoming atmosphere, great for a casual pint or Sunday roast.

- Moving in meal? Tayyabs is one of East London's most iconic restaurants, famed for its atmosphere and consistently regarded Punjabi cuisine. A Whitechapel institution since the 1970s, it's particularly known for its sizzling lamb chops. A true local favourite and destination spot alike.

- It's a pleasant wander into the Shoreditch via Brick Lane. On the way stop off for some bagels at Beigel Bake, visit the Spitalfields City Farm or spot Gilbert and George at their gallery on Heneage Street. There's so much choice.



A WORD FROM THE OWNER...

"What originally drew us to this house was how rare it felt for central London. You are moments from the City and surrounded by everything London has to offer, yet the house itself feels calm, spacious and private.

The terrace completely sold it to us the first time we viewed it. It genuinely feels like an extension of the home in the warmer months and is something very difficult to find locally. Whether it's a quiet coffee in the morning or hosting friends in the evening, the outside space has been one of our favourite parts of living here.

Inside, the proportions of the rooms are what really make the house stand out. All three bedrooms are proper doubles with excellent storage, and the walk-in wardrobe and overall layout make day-to-day living incredibly comfortable. The underfloor heating and quality fittings throughout also give the house a luxurious yet homely feel.

Location-wise, it has been perfect for us. Tower Hill, Aldgate, Aldgate East and Whitechapel stations are all within walking distance, making commuting effortless. Brick Lane, Spitalfields, St Katharine Docks and the City are all on your doorstep, with fantastic cafes and restaurants nearby whilst still being tucked away on a quieter residential street.

What we have loved most is having genuine family-sized living space in central London with such a beautiful terrace - something incredibly rare to find."

REQUEST A VIEWING
0208 520 3077

FOLLOW US ➔ @STOWBROTHERS
STOWBROTHERS.COM



REQUEST A VIEWING
0208 520 3077

FOLLOW US → @STOWBROTHERS
STOWBROTHERS.COM



Reception Room / Kitchen

16'1" x 26'10"

Bathroom

5'10" x 4'0"

Hallway

7'0" x 6'1"

Bedroom

15'8" x 13'8"

Dressing Room

7'8" x 6'4"

Ensuite

7'4" x 5'2"

Hallway

12'2" x 12'7"

Bathroom

7'10" x 5'6"

Storage

3'10" x 4'7"

Bedroom

8'10" x 12'9"

Bedroom

6'8" x 12'9"

Terrace Rooftop

17'3" x 23'5"



REQUEST A VIEWING
0208 520 3077

FOLLOW US → @STOWBROTHERS
STOWBROTHERS.COM