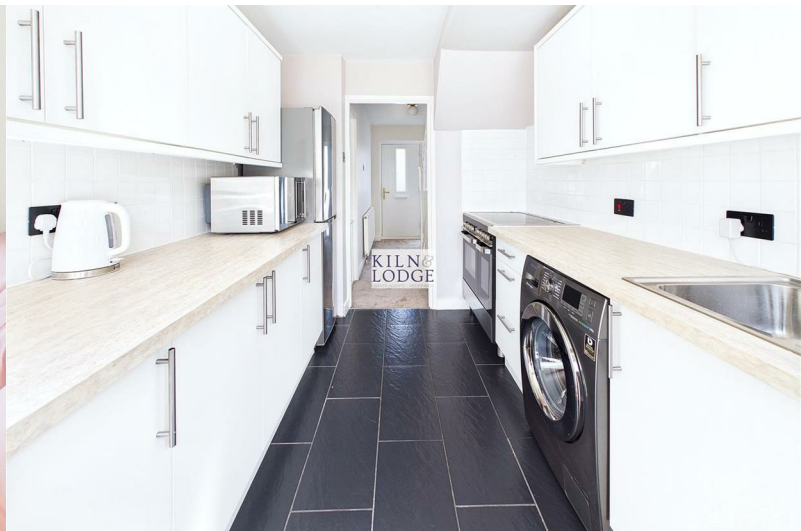




## 4 Ash Grove

Chelmsford, CM2 9JS

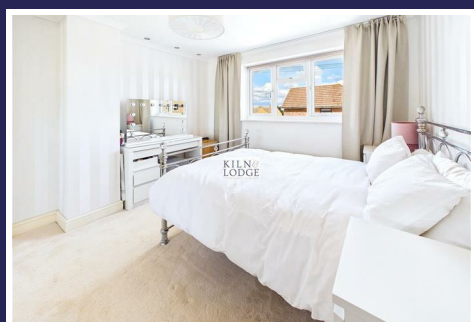
Asking price £375,000



# 4 Ash Grove

Chelmsford, CM2 9JS

Asking price £375,000



## Entrance Hall

11'2 x 5'8 (3.40m x 1.73m)

Entrance door, stairs to first floor, storage cupboard, radiator.

## Kitchen

10'3 x 7'8 (3.12m x 2.34m)

Window and door to rear, range of fitted storage cupboards, with space and plumbing for fridge/freezer, oven, washing machine. Work surfaces incorporate sink unit, part tiled walls.

## Lounge/Diner

21'11 x 11'1 (6.68m x 3.38m)

Window to front, doors to rear. Feature fireplace with gas fire, fitted shelving, radiator.

## First Floor

### Landing

7'4 x 3'7 (2.24m x 1.09m)

Stairs to ground floor, access to loft.

### Bedroom One

11'3 x 10'11 (3.43m x 3.33m)

Window to front, radiator.

### Bedroom Two

10'9 x 9'10 (3.28m x 3.00m)

Window to rear, radiator.

### Bedroom Three

8'2 x 6'1 (2.49m x 1.85m)

Window to front, radiator.

## Bathroom

6'2 x 5'9 (1.88m x 1.75m)

Window to rear, panelled bath with shower over, pedestal wash hand basin, close coupled WC, tiled walls. Radiator.

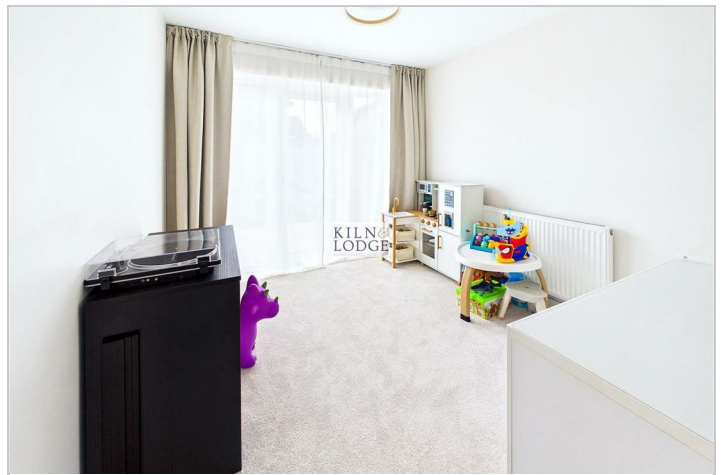
## Exterior

### Driveway

Block paved driveway. Access to rear garden.

### Rear Garden

Paved patio area, remainder laid to lawn, fencing to boundaries.



## Road Map



## Hybrid Map



## Terrain Map



## Floor Plan



## Viewing

Please contact our Chelmsford Office on 01245 330764 if you wish to arrange a viewing appointment for this property or require further information.

## Energy Efficiency Graph



These particulars, whilst believed to be accurate are set out as a general outline only for guidance and do not constitute any part of an offer or contract. Intending purchasers should not rely on them as statements of representation of fact, but must satisfy themselves by inspection or otherwise as to their accuracy. No person in this firm's employment has the authority to make or give any representation or warranty in respect of the property.