



LAWRENCE HOUSE

St. Andrews Street | Bury St. Edmunds | Suffolk





Expansive French patio doors brings the outside in and transforms the principal living space

LAWRENCE HOUSE

ST. ANDREWS STREET | BURY ST EDMUNDS | SUFFOLK

- One-bedroom penthouse apartment, designed to a high specification with two rooftop terraces
- Prime location, exceptional town centre convenience within historic Bury St. Edmunds & A14 access
- Impressive private residents' central atrium lobby serviced by elevator & glazed stairwells
- RAF Lakenheath & Mildenhall are easily commutable within 25 mins
- Highly equipped sleek contemporary kitchen
- Glazed French patio doors brings the outside in & transforms the principal living space
- Privacy curtains & blinds fitted throughout
- Much coveted underground gated parking



Stylish, high specification town centre penthouse apartment with gated underground parking

Positioned on the top floor is this exclusive one-bedroom penthouse apartment, which has been tastefully designed and built with the showpiece being the French patio doors that dramatically rolls back to bring the outside in while providing lots of natural light. Accommodation includes entrance hall, a large open-plan kitchen/living/dining space with a meticulously designed sleek contemporary kitchen area, tall utility cupboards, and a sumptuous walk-in shower room.

Situated in the epicentre of town close to the thriving Arc / Apex retail and entertainment amenities, yet discreetly tucked away from the streetscape, the apartment is approached via a private residents' lobby with a glazed atrium, secure video/audio entry phone systems and automatic welcome lighting. In addition to gated underground parking, there is also a block paved area to the front of the property with a bike/bicycle storage facility. Two roof terrace gardens surprise and delight for those summer evenings.

Lawrence House is conveniently located within the heart of the historic Cathedral town of Bury St. Edmunds and provides excellent A14 ease-of-access and is within close vicinity of a bus stop and a short walk to the train station connecting Cambridge/Ipswich/London. All major food stores are within easy reach as are the boutique shops, bars and restaurants. Refer to our Situation page to discover Suffolk

ACCOMMODATION

WITH APPROXIMATE MEASUREMENTS

Lawrence House displays extremely well-considered features for the enjoyment of tenants following a comprehensive design and build to the highest of standards. The versatile, well-appointed and fantastically arranged accommodation measures approximately 648ft² (60.3 m²) and made to stand-out from the rest. Ideally suited for relocating professionals and visiting forces alike.

COMMUNAL ENTRANCE HALL LOBBY

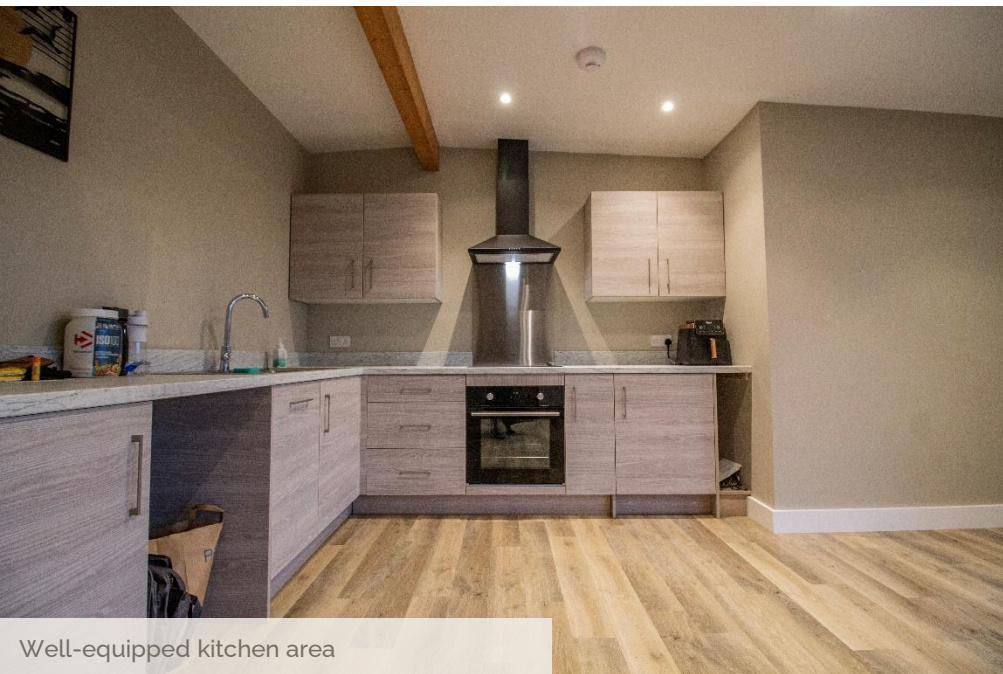
Glazed doors provide access from the street frontage with a Swipe & Go key fob or via a secure video/audio entry phone system for guests and opens into a welcoming private residents' lobby area. Automated lighting and mailboxes. There is bike/bicycle storage and a bus stop close by.

APARTMENT ENTRANCE HALL 22'6" x 16'5" (6.89m x 5.03m)

Opens into the apartment entrance hall with doors to open-plan kitchen / dining / living area, bedroom and shower room.

Video/audio entry phone system. Recessed lighting.





KITCHEN / DINING / LIVING AREAS 5.52m x 4.88m (18'1" x 16')

Walk into a large, light-filled dual aspect open-plan kitchen/living/dining space with the crowning feature being its dramatic six door bi-fold system that rolls back to bring the outside in. The well-designed contemporary Kitchen area has extensive dove grey wall-mounted – part glazed with backlit display lighting – and base cabinetry that extends to the carefully considered tall larder doors and concealed utility cupboard. Marbled quartz worktops inset with one and half sink, drainer and mixer tap. High-quality appliances include below counter fridge, Capel range cooker in stainless steel with mirrored splashback two electric ovens / separate electric grill and 5-zone electric ceramic hob, Caple dishwasher. The other end of the space has a lounge and dining area with TV, Satellite, DAB and phone points. Recessed lighting. French Patio doors.



BEDROOM 18' x 9'4" (5.49m x 2.83m)

Principal bedroom with windows to side aspect fitted with black-out blind and curtains. TV point. Useful storage nook. Recessed lighting. Panel radiator.

SHOWER ROOM 8'8" x 6'2" (2.63m x 1.89m)

This sumptuous shower room, usefully accessed via the Inner Hall to double as a cloakroom, is fitted with a large walk-in rain shower and separate shower hose, wall-mounted wash basin with mixer tap and large vanity unit with concealed wc. Extractor fan. Heated towel rail. LED mirror. Recessed lighting. Ceramic tiled underfloor heating.



Bedroom One with useful recess



Sumptuous walk-in Shower Room



Two impressive low-maintenance rooftop terraces



DISCOVER SUFFOLK

Bury St. Edmunds is an extremely attractive and prosperous market town located in the heart of Suffolk. The A14 gives fast access to the east coast ports, Ipswich, Cambridge, the Midlands and to Stansted and Cambridge Airports, as well as London via the M11. The Arc is the town's latest, modern retail outlet and is a popular shopping destination. All major food stores are well-represented, including Waitrose. There is a twice-weekly open-market in addition to a variety of eateries, attractions and places to stay. The Millennium Tower that crowns St. Edmundsbury Cathedral is the landmark. There is plenty on offer to keep families entertained. The Apex Arts Centre is a state-of-the-art live entertainment venue which hosts exhibitions and events. Watch a great performance at the Theatre Royal – the only surviving Regency playhouse in England. Other amenities include a range of health clubs, swimming pools and leisure facilities. Bury St. Edmunds has a real sense of community and is a truly friendly town. Ideally placed to offer a fantastic lifestyle to visiting forces based at RAF Lakenheath and RAF Mildenhall.

Horseracing is at neighbouring Newmarket, a number of interesting golf courses nearby, sailing and water sports on the River Orwell and an outstanding 50 mile (80 km) heritage coastline and an Area of Outstanding Natural Beauty encompassing Aldeburgh and Southwold.

SITUATION



(A14)	1 mile
Newmarket	18 miles
Ipswich	25 miles
Cambridge	28 miles



Aldeburgh (Suffolk Heritage Coast)
(1 hr 10 mins / 46.5 miles)



From Bury St. Edmunds
London Kings Cross
(105 mins)
London Liverpool Street
(110 mins)
Cambridge
(50 mins)



From Bury St. Edmunds
London Stansted Airport
(48 mins / 51 miles)
Heathrow Airport
(2hrs / 105 miles)



There is a wide choice of excellent schooling, both Private and State, within the area.

Private includes: Culford School (1-19); South Lee School (2-13).

State includes: St. Edmundsbury CEVAP; (5-11); King Edward VI CEVC (11-18).

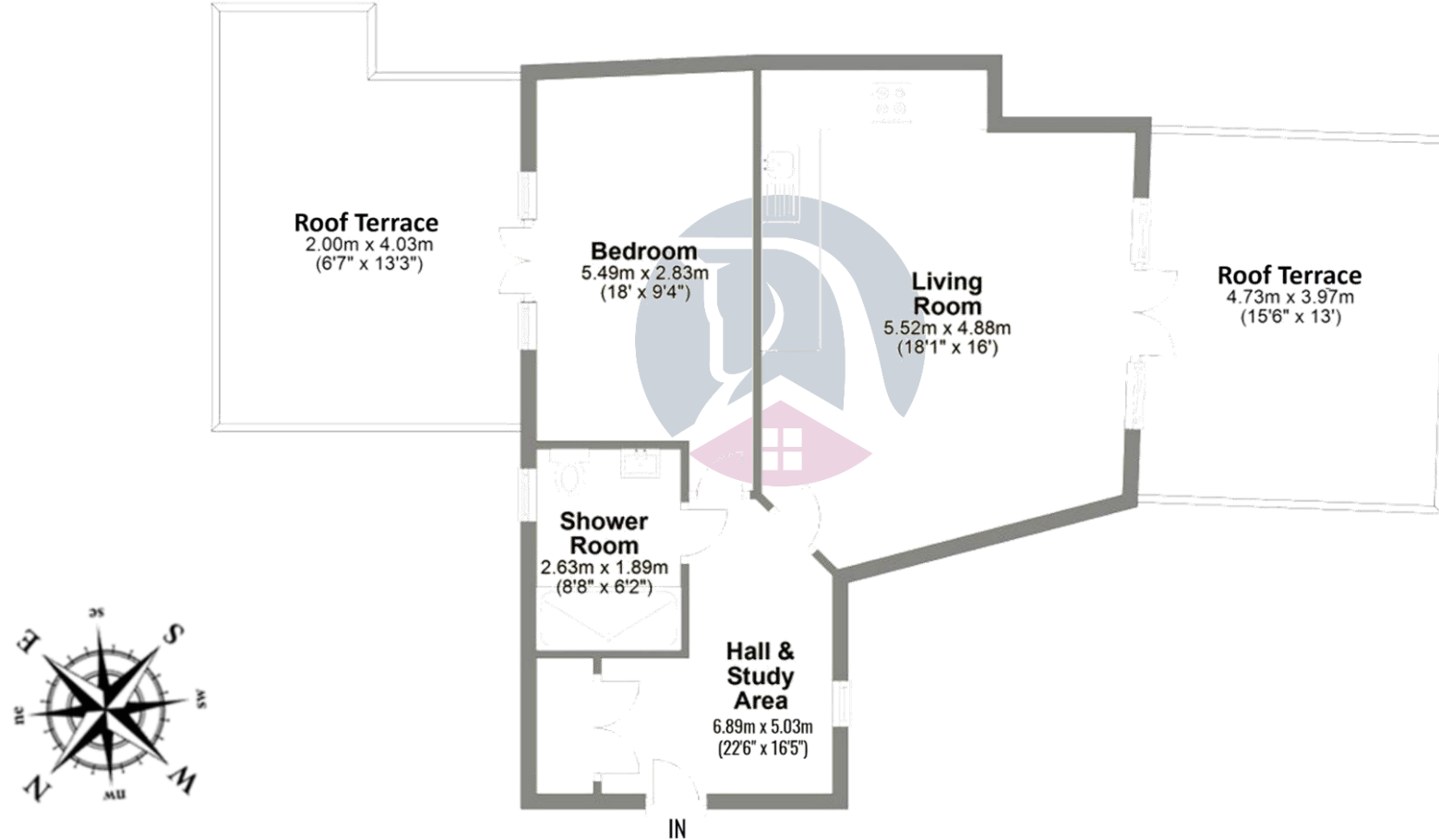
University of Suffolk at West Suffolk College - Further Education.



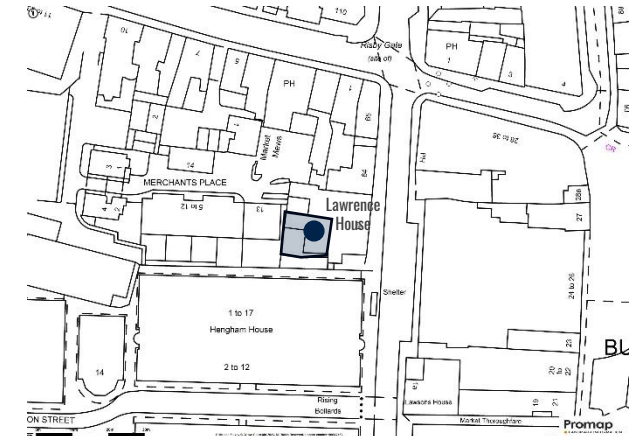
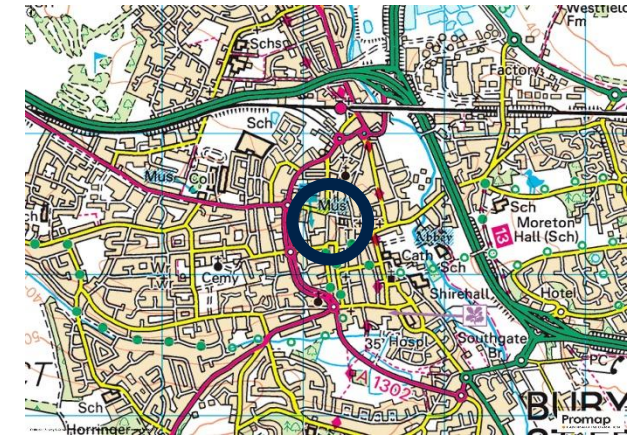
FLOORPLAN

Approximate Gross Internal Area (GIA)

= 648 ft² (60.3 m²)



This plan is for layout guidance only. Drawn in accordance with RICS guidelines. Not drawn to scale, unless stated. Windows & door openings are approximate. Whilst every care is taken in the preparation of this plan, please check all dimensions, shapes & compass bearings before making any decisions reliant upon them.



GENERAL INFORMATION

TENURE

The property is offered to rent and is available from 27 February 2025.

SERVICES

Mains electricity, drainage and water. Electric radiators. Videx secure entry system.

AGENT'S NOTE: none of the services have been tested.

LOCAL AUTHORITY

West Suffolk Council (01284 763 233)

Tax band C – £1,942.11 | NB *USAF personnel exempt*.

EPC rating – C.

VIEWING ARRANGEMENTS

Strictly by prior appointment through the landlord's agent: Whatley Lane.

If there is anything of particular importance, please contact us to discuss, especially before embarking upon your journey to view the property.

DIRECTIONS (IP33 1SD)

(by car) leave the M11 at junction 9 and take the A11 town From London/Cambridge ards Newmarket. Continue on the A14 towards Bury St. Edmunds. Exit the A14 at Junction 43, signposted 'Bury St. Edmunds Central'. Take the A1101 towards the town centre taking the second exit at the 1st roundabout and the same again at the 2nd and 3rd roundabouts. Continue along Parkway for 75 metres and turn left into Cattle Market carpark where you can access The Arc and apartment 9 Lawrence House respectively.

From RAF Lakenheath/Mildenhall (by car) either follow the A1101 all the way directly to Walpole House (as above), or go southbound on the A11 connecting to the A14 at Junction 38 heading towards Bury St. Edmunds until exiting at Junction 43 (as above).

From the town centre (on foot) leaving the Market Square continue along the thoroughfare (Former Post Office on your left), then right into St. Andrews Street and immediately left , apartment 9 Lawrence House glazed lobby can be found on your left-hand side.



Bury St. Edmunds

1 Churchgate Street
Bury St. Edmunds IP33 1RL
+44 (0) 1284 765 256
bury@wlea.co.uk

London (Chelsea)

5 Milner Street
London SW3 2QA
+44 (0) 207 243 0964
london@wlea.co.uk

www.whatley-lane.co.uk
www.rightmove.co.uk
www.countrylife.co.uk

Disclaimer 1. Whatley Lane Estate Agents (the "Agents") are not authorised to make or give any representations or warranties in relation to the property either here or elsewhere, either on their own behalf or on behalf of their client or otherwise. The Agents assume no responsibility for any statement that may be made in our offices. These particulars do not form part of any offer or contract and must not be relied upon as statements or representations of fact. 2. Any areas, measurements or distances are approximate. The text, images and plans are for guidance only and are not necessarily comprehensive. It should not be assumed that the property has all necessary planning, building regulation or other consents and the Agent have not tested any services, equipment or facilities. Purchasers must satisfy themselves by inspection or otherwise. 3. The Agents would urge any potential purchaser to contact our offices to establish availability of this property prior to commencing any journey of distance to view. Details designed and produced by Whatley Lane Marketing | Jan 2026.



Proudly in association with our London Office

