



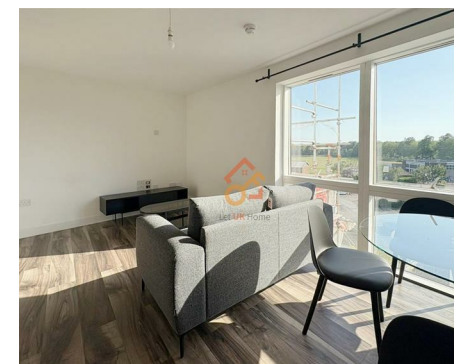
Let **UK** Home

1 Bedrooms

Flat

**Located
in Birmingham**

£1,000 Per Month



padmin@letukhome.co.uk

<https://www.letukhome.co.uk/>

0121 828 8955



Hemisphere Apartments Birmingham

B5 7RJ



Let UK Home are excited to offer this spectacular one bedroom apartment in the heart of Hemisphere located in Birmingham, B5 7RJ.

The flat comprises a spacious open kitchen with a stylishly attached dining area, a magnificent living room, one bright bedroom with built-in wardrobes and one modern bathroom.

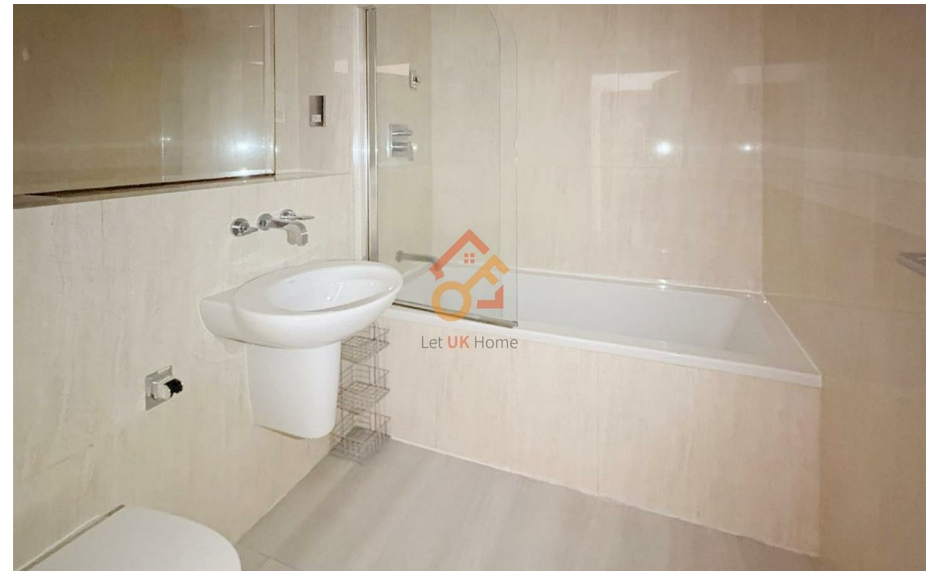
Residents of this property will benefit from a concierge, a parking space and an unrivalled selection of shops, bars, restaurants, and leisure facilities.

The apartment is conveniently located close to some of the UK's famous supermarkets and a variety of dining options, ensuring easy access to daily necessities. Supermarkets such as ALDI, M&S and SPAR, as well as restaurants such as Tabule Kitchen, Sorrento Lounge and Little Black Oak Restaurant can be found just a short walk from the flat. In addition, the famous University of Birmingham and Birmingham City University can be quickly reached by bus, and Aston University is within walking distance.

Hemisphere Apartments Birmingham

£1,000 Per Month

- 3rd Floor
- 24h Security
- Close to Universities
- EPC Rating: C
- Concierge Service
- Parking Space
- Close to Local Shops





Let **UK** Home

Let UK Home
JQ Modern 120 Vyse St
Birmingham
B18 6NF

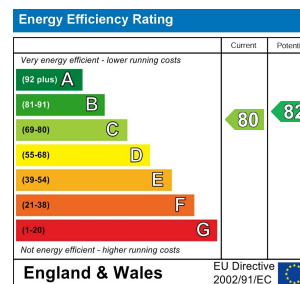
0121 828 8955

pmadmin@letukhome.co.uk

Council Tax Band: C

Local Authority: Birmingham City Council

Agents Note: Whilst every care has been taken to prepare these particulars, they are for guidance purposes only. All measurements are approximate and are for general guidance purposes only and whilst every care has been taken to ensure their accuracy, they should not be relied upon and potential buyers/tenants are advised to recheck the measurements.



<https://www.letukhome.co.uk/>