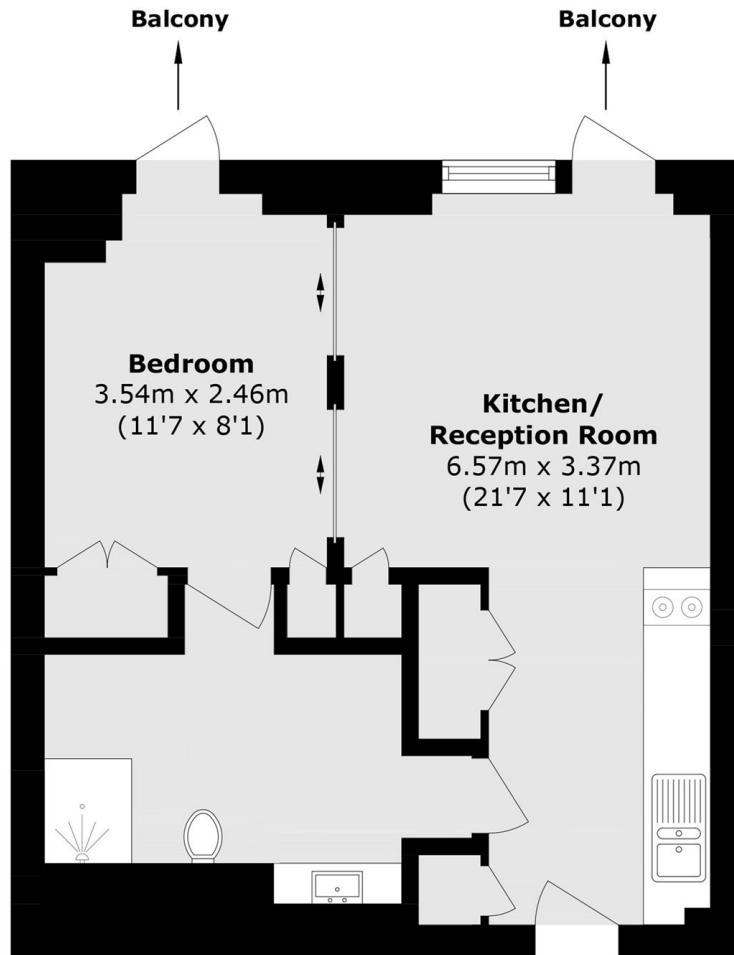


## NEW UNION SQUARE, SW11

£2,950 pcm

An open plan kitchen and living space with a bedroom separate by a sliding glass doors. At over 400 square feet with ample storage throughout this property is perfect for a single person or a couple.

- Spacious Studio
- Integrated Kitchen
- Private Balcony
- 24 Hour Concierge
- Swimming Pool and Spa
- Residents Cinema



Total area (approx.): 39.2 sq. m (419.7 sq. ft)

**LiFE RESIDENTIAL**

11 Flagstaff House, London,  
SW8 2LZ

Sales: 020 7476 1408

Lettings: 020 7582 7989

Energy Rating: C. We aim to make our particulars both accurate and reliable. However they are not guaranteed; nor do they form part of an offer or contract. If you require clarification on any points then please contact us, especially if you're traveling some distance to view. Please note that appliances and heating systems have not been tested and therefore no warranties can be given as to their good working order.