



# Westwood Avenue

Ferndown, Dorset.



# 35

Westwood Avenue  
Ferndown  
BH22 9HL



3



1



2

- A charming detached bungalow with no chain and vacant possession
  - Three bedrooms and two reception rooms
- In need of some modernisation, room to improve and extend (stpp)
- Gardens front and rear, parking for numerous vehicles
- Walking distance to the Town Centre, bus routes and conveniences
- Situated in an excellent school catchment area

Guide Price £380,000

Freehold

Wimborne Sales

01202 843190

wimborne@symondsandsampson.co.uk





## THE PROPERTY

A charming three bedroom detached bungalow only a short walk from Ferndown Town Centre. This property is in need of some modernisation but has lots of parking, wonderful scope to extend and improve coupled with no forward chain whilst offering vacant possession.

## ACCOMMODATION

A large hallway leads to all principal rooms with a sitting room, three bedrooms (two doubles) a kitchen and a separate breakfast room, a wet room and a separate W/C. Originally the main bedroom was the sitting room therefore re-modelling can be carried out, likewise there is a large loft which has scope to extend into (stpp). Garden to the rear, large front garden and parking for numerous vehicles.

## OUTSIDE

The front garden is large with a long driveway which leads to the rear garden, this area could accommodate numerous vehicles. The remainder of the front is laid to shingle, lawn and well stocked shrub and flower borders. The rear garden has a patio together with lawn coupled with a hard standing (formally a garage) ideal for a shed or greenhouse.

## LOCATION

Situated in the heart of Ferndown's Town Centre and only a short stroll to all major shops, the supermarket and bus routes. The town also has a host of cafes and eateries to enjoy and convenience stores, which are all nearby. There is easy access to larger Towns and Cities via the bypass.

## DIRECTIONS

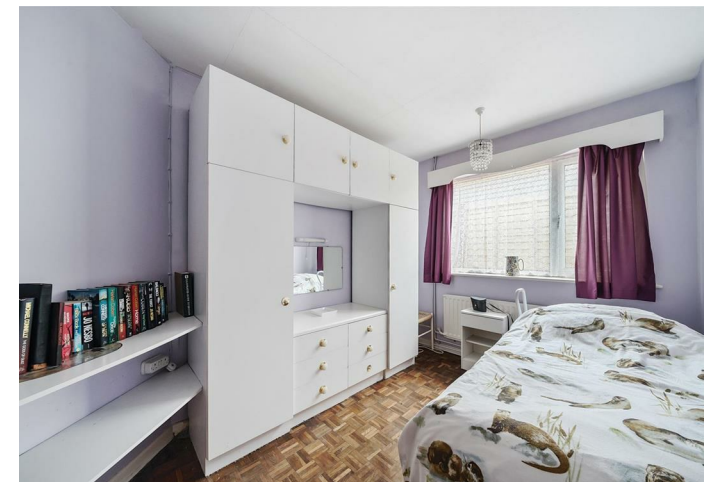
What three words /// [young.flock.wings](#)

## SERVICES

Oil central heating  
Mains water and electricity  
Council Tax Band - D  
EPC Rating - E

## MATERIAL INFORMATION

Gas is supplied to the road should the next occupant wish to change from oil.  
Broadband available  
Full mobile phone signal





## Westwood Avenue, Ferndown

Approximate Area = 930 sq ft / 86.3 sq m

For identification only - Not to scale



Floor plan produced in accordance with RICS Property Measurement 2nd Edition, Incorporating International Property Measurement Standards (IPMS2 Residential). © nichecom 2025. Produced for Symonds & Sampson. REF: 1234796



WIM/NW/JAN25



01202 843190

wimborne@symondsandsampson.co.uk  
Symonds & Sampson LLP  
5, West Street,  
Wimborne, Dorset BH21 1JN



Important Notice: Symonds & Sampson LLP and their Clients give notice that: 1. They have no authority to make or give any representations or warranties in relation to the property. These particulars do not form part of any offer or contract and must not be relied upon as statements or representations of fact. 2. Any areas, measurements or distances are approximate. The text, photographs and plans are for guidance only and are not necessarily comprehensive. It should not be assumed that the properties have all necessary planning, building regulation or other consents and Symonds and Sampson LLP have not tested any services, equipment or facilities. 3. We have not made any investigation into the existence or otherwise of any issues concerning pollution of the land, air or water contamination and the purchaser is responsible for making his/her own enquiries in this regard. 4. The property is sold subject to and with the benefit of all existing wayleaves, easements and rights of way whether public or private, specifically mentioned or not. The vendors shall not be required to define any such rights, privileges or advantages.

**SALES | LETTINGS | AUCTIONS | FARMS & LAND | COMMERCIAL | NEW HOMES | PLANNING & DEVELOPMENT**