

# SNELLERS

ESTATE AGENTS



## Marlow Crescent, TW1

£3,300 PCM

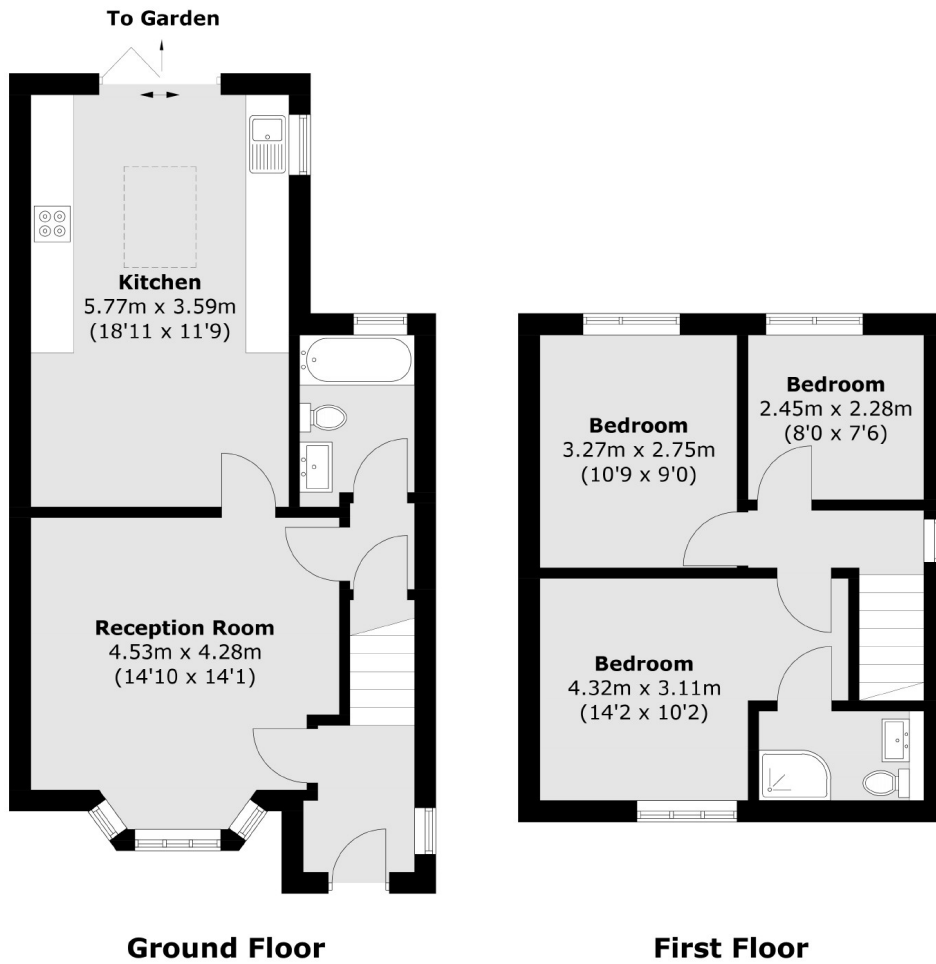
A well presented family home. Upstairs there are three double bedrooms and a family bathroom. Downstairs there is a large eat in kitchen, spacious reception room and a further bathroom. Further benefits include off-street parking for two cars and a generous garden.

Marlow Crescent is a residential road half a mile to Chase Bridge Primary School, Twickenham Station and high street with plenty of shops, pubs, bars and restaurants with direct access into London Waterloo.

- Semi Detached • Three Double Bedrooms • Two Bathrooms •
- South Facing Garden • Driveway • Wood Flooring •

# SNELLERS

ESTATE AGENTS



Total area (approx.): 84.0 sq. m (904.1 sq. ft)

Snellers Twickenham Lettings  
64-66 Heath Road  
Twickenham  
TW1 4BX  
020 8892 5678  
[twickenhamlettings@snellers.co.uk](mailto:twickenhamlettings@snellers.co.uk)

Energy Rating: D We aim to make our particulars both accurate and reliable. However they are not guaranteed; nor do they form part of an offer or contract. If you require clarification on any points then please contact us, especially if you're traveling some distance to view. Please note that appliances and heating systems have not been tested and therefore no warranties can be given as to their good working order