



Wilton Crescent

London, SW1X

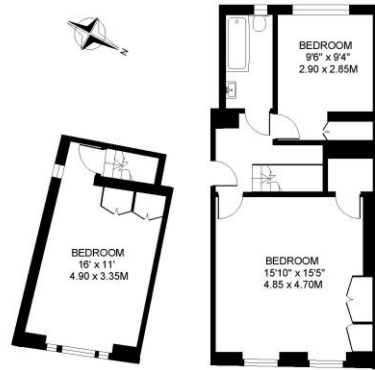
£6,500 per month
(£1,500 per week)

A magnificent duplex apartment spanning across 1,698sqft. the apartment has wooden floors, a separate kitchen and high ceilings.

CHESTERTONS

WILTON CRESCENT, KNIGHTSBRIDGE, LONDON SW1

APPROXIMATE INTERNAL (LIVING) FLOOR AREA
1698 SQ.FT. / 157.7 SQ.M.



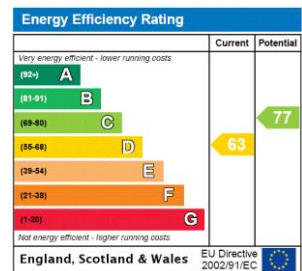
GROUND FLOOR 700 SQ.FT.



LOWER GROUND FLOOR 998 SQ.FT.

COPYRIGHT: Floorplan produced for "Henry & James Estate Agents Ltd." by floorplanners.co.uk
This plan is not to a given scale, and is for guidance only, and must not be relied upon as a statement of fact.
All measurements are maximum, and include window bays, and wardrobes where applicable.
This plan has been prepared in accordance with the "RICS" Code of Measuring Practice.
Where a room has a sloping ceiling, the dotted line indicates height at 1.5m, and measurements are shown at floor level.

Minimum Term: 12 months
Deposit Required: £9,000.00
Local Authority: City Of Westminster
Council Tax Band: H
EPC Rating: D
Furnished



Chestertons Knightsbridge & Belgravia Lettings

31 Lowndes Street
London
SW1X 9HX
lettings.knightsbridge@chestertons.com
02072353530
chestertons.co.uk

Additional tenant charges apply (fees apply to non-AST tenancies only)
Tenancy Agreement Fee: £300
References per Tenant/Guarantor: £60
Inventory check (approx. £100 – £250 inc. VAT)
chestertons.co.uk/property-to-rent/applicable-fees

Chesterton Global Ltd trading as Chestertons for themselves and for the vendor of this property whose agents they are, give notice that (i) these particulars do not constitute any part of an offer or contract, (ii) all statements contained within these particulars are made without responsibility on the part of Chestertons or the vendor, (iii) whilst made in good faith, none of the statements contained within these particulars are to be relied upon as a statement or representation of fact, (iv) any intending purchasers must satisfy themselves by inspection or otherwise as to the correctness of each of the statements contained within these particulars, (v) the vendor does not make or give either Chestertons or any person in their employment any authority to make or give representation or warranty whatsoever in relation to this property. Wide angle lenses may be used. ©Copyright Chestertons | Chesterton Global Ltd | Registered Office 40 Connaught Street, Hyde Park, London W2 2AB Registered Company Number 05334580.

