



## Birkenhead Street, WC1H

£435,000

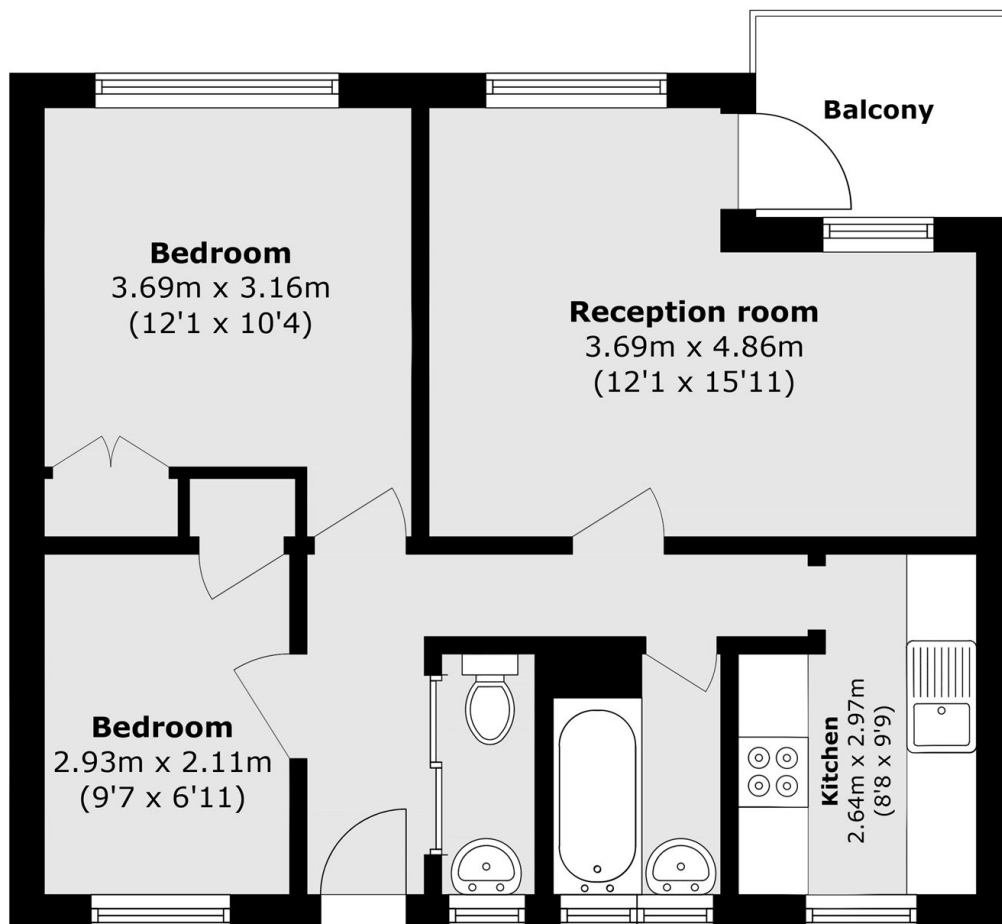
A well-appointed two-bedroom home located in a purpose-built block with lift access, a private balcony a separate kitchen and no onward chain.

Riverfleet is located on Birkenhead Street which is opposite King's Cross St Pancras including all the conveniences at the newly developed Coal Drops Yard.

### Features

- Two Bedrooms
- Separate Kitchen
- Living Room
- Private Balcony
- Lift Access
- No Onward Chain

# Birkenhead Street, London, WC1H



Total area (approx.): 51.5 sq. m (554.3 sq. ft)

Balcony area (approx.): 3.9 sq. m (41.9 sq. ft)