



11 Spindle View, Calverton - NG14 6HF

Guide Price £290,000



11 Spindle View

Calverton, Nottingham

Spacious detached family home in the ever popular village of Calverton! Lounge with conservatory, modern dining kitchen, 3 beds and a bathroom alongside a lawned garden, driveway and garage!

Council Tax band: C

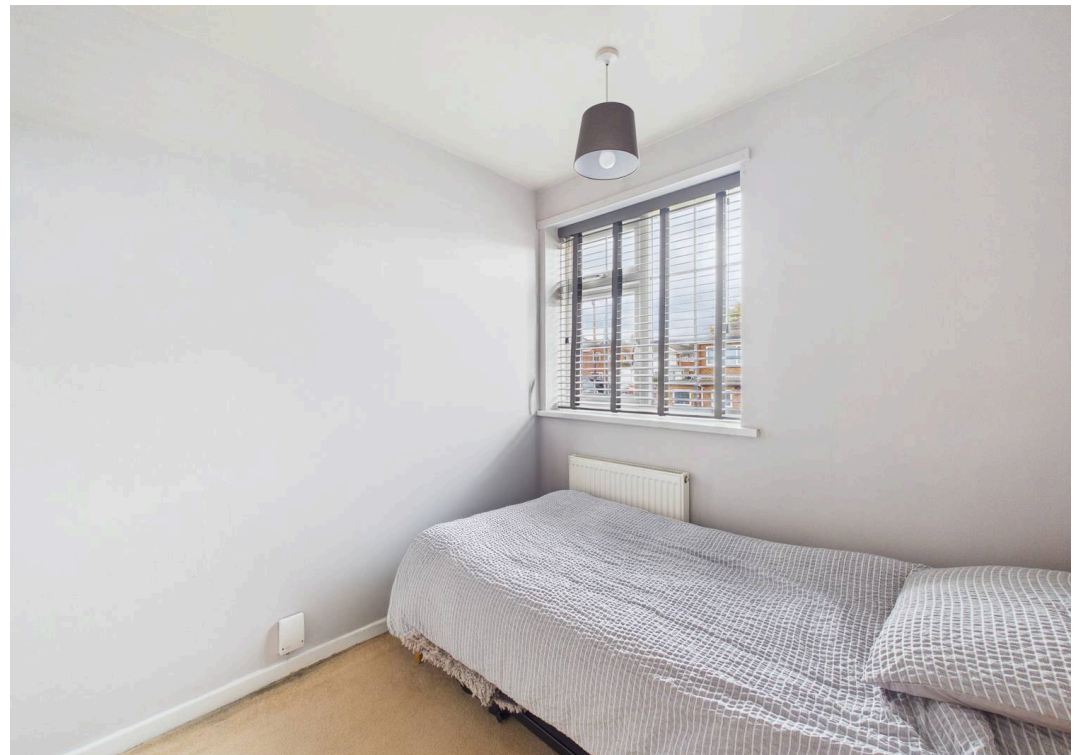
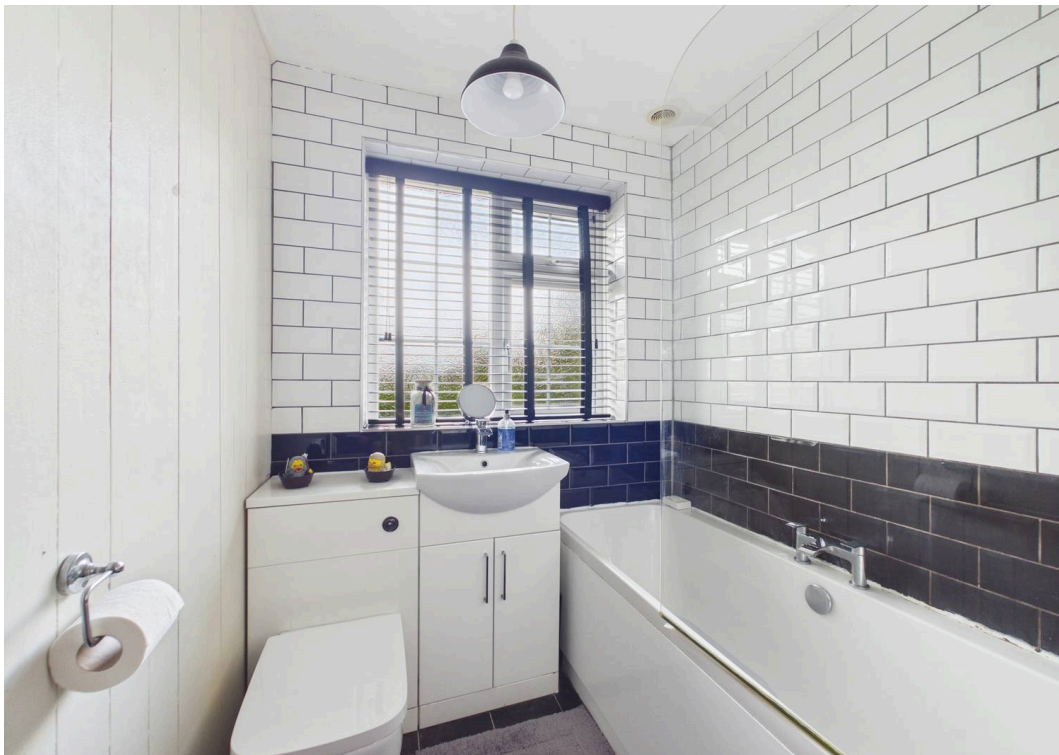
Tenure: Freehold

EPC Energy Efficiency Rating: D

EPC Environmental Impact Rating: D

- Detached family home offering spacious and well-presented accommodation
- Popular Calverton location close to shops, schools, leisure and transport links
- Bright and spacious lounge with a feature fireplace
- Conservatory to rear providing additional living space with garden views
- Modern dining kitchen with fitted units and integrated cooking appliances
- Three bedrooms (including two doubles)
- Family bathroom with a three-piece white suite, rainfall over-bath shower and tiled finishes
- UPVC double glazing and gas central heating with a Worcester boiler
- Enclosed rear garden with lawn, mature planting and a paved patio seating area
- Driveway and garage providing convenient off-street parking and storage







Floor 0



Floor 1



Approximate total area⁽¹⁾

89.9 m²
967 ft²

Reduced headroom

0.8 m²
8 ft²

(1) Excluding balconies and terraces

Reduced headroom

..... Below 1.5 m/5 ft

Calculations reference the RICS IPMS 3C standard. Measurements are approximate and not to scale. This floor plan is intended for illustration only.

GIRAFFE360



David James Estate Agents

98-100 Front Street, Arnold - NG5 7EJ

0115 955 5550 • arnold@david-james.com • www.david-james.com

These particulars are produced in good faith and are set out as a general guide only. Measurements are approximate and floor plans are for illustrative purposes only. Services have not been tested. We have established professional relationships with third-party suppliers for the provision of services to Clients, details of which can be found on the property listing page on our website.