

# LEASEHOLD



Flat (EPC Rating: C)

## NEASDEN LANE, LONDON. NW10

Asking Price

# £310,000 LEASEHOLD

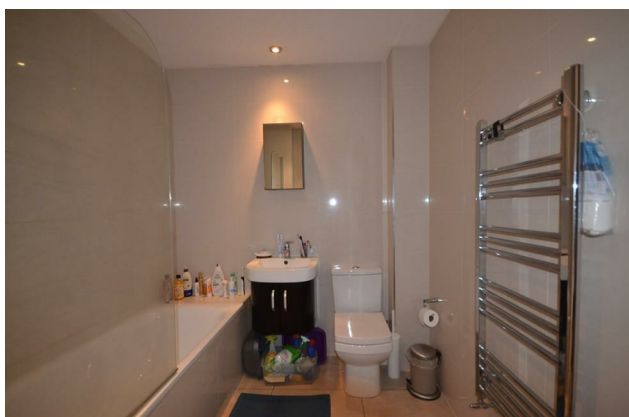


**HAYMILLS**  
Expertise Experience Engagement



# 1 BED FLAT IN PRIME LOCATION IN NW10

Charming flat located at Neasden Lane in London, NW10 1QR. This delightful property boasts a cosy reception room, perfect for relaxing or entertaining guests. With one bedroom, this flat offers a comfortable living space ideal for individuals or couples looking for a new home. The property also features a well-maintained bathroom, fitted kitchen, and gas central heating and a lift. Situated in a prime location in a shopping parade with multiple shops, eateries and several bus services with Neasden Station down the road makes this property perfect for both first time buyers and investors alike.



Council Tax Band C

Energy Performance Graph

Energy Efficiency Rating		Current	Potential
<i>Very energy efficient - lower running costs</i>			
(92 plus) <b>A</b>			
(81-91) <b>B</b>			
(69-80) <b>C</b>		<b>80</b>	<b>80</b>
(55-68) <b>D</b>			
(39-54) <b>E</b>			
(21-38) <b>F</b>			
(1-20) <b>G</b>			
<i>Not energy efficient - higher running costs</i>			
<b>England &amp; Wales</b>	EU Directive 2002/91/EC		

Call us on

0208 904 8822

[info@haymills.uk](mailto:info@haymills.uk)

Agents Note: Whilst every care has been taken to prepare these particulars, they are for guidance purposes only. All measurements are approximate and are for general guidance purposes only and whilst every care has been taken to ensure their accuracy, they should not be relied upon and potential buyers are advised to recheck the measurements.