



Somersby Shipyard Road, Ramsey, Isle Of Man, IM8 3DN
Asking Price £352,500

- Spacious and characterful home blending period charm with modern upgrades
- Two welcoming reception rooms with a log burner and open fireplace for cosy evenings
- Three bedrooms plus study/fourth bedroom, two with en-suite shower rooms
- Modern kitchen, separate utility room and stylish ground floor shower room with mood lighting & Bluetooth
- Private sun-trap outdoor space with gated off-road parking ideal for easy day-to-day living



Somersby, Shipyard Road, Ramsey

Steeped in local history yet beautifully modernised for contemporary living, Somersby is a unique and characterful home offering generous and versatile accommodation in the heart of Ramsey.

The property forms part of the historic Ramsey Industrial School, which began life in 1862 as a short-term ragged school for destitute children, founded by Miss Susannah Gibson, daughter of a local shipyard owner. In 1863, land on Shipyard Road was gifted by Mr Callow, allowing a permanent building to be constructed. Today, this historic building has been sympathetically updated to create a stylish and spacious home.

Internally, the property offers excellent living space with two reception rooms to the front, including a welcoming living room with a log burner and a separate dining room with an open fireplace, ideal for both relaxing and entertaining. There is a modern kitchen, separate utility room, and a study or fourth bedroom, providing flexibility for home working or additional accommodation. A contemporary ground floor shower room, complete with mood lighting and Bluetooth connectivity, adds a modern touch.

To the first floor are two excellent double bedrooms, both benefiting from en-suite shower rooms, along with a third bedroom completing the accommodation.

Externally, the property enjoys a private, sun-trap outdoor space, perfect for outdoor dining or relaxing, together with off-road parking and gated access.

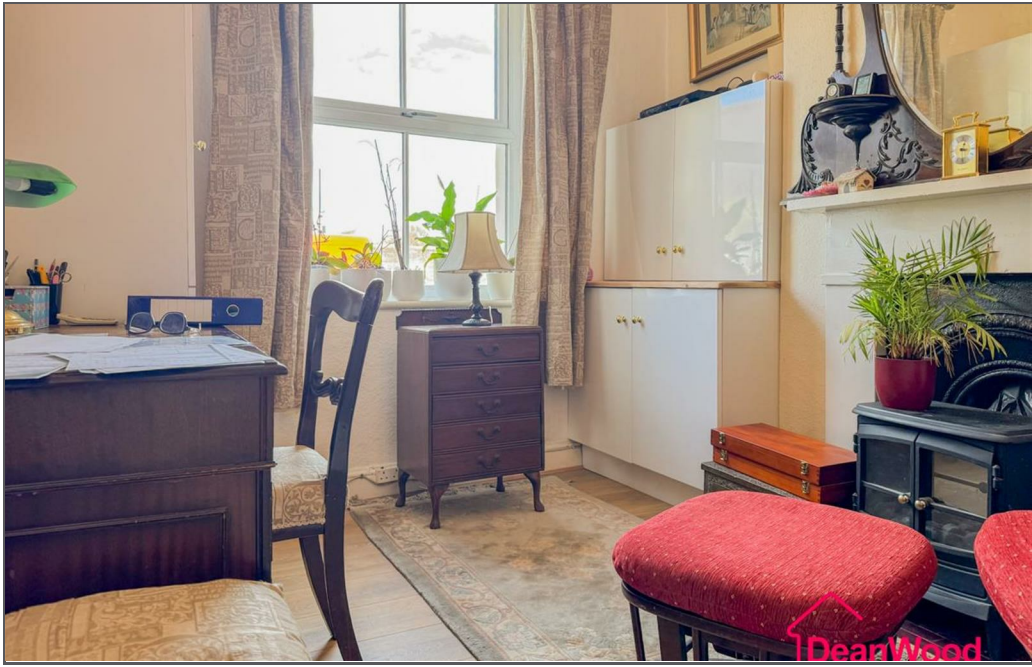
Combining character, history and modern comforts, Somersby is a distinctive home offering space, charm and convenience within Ramsey.







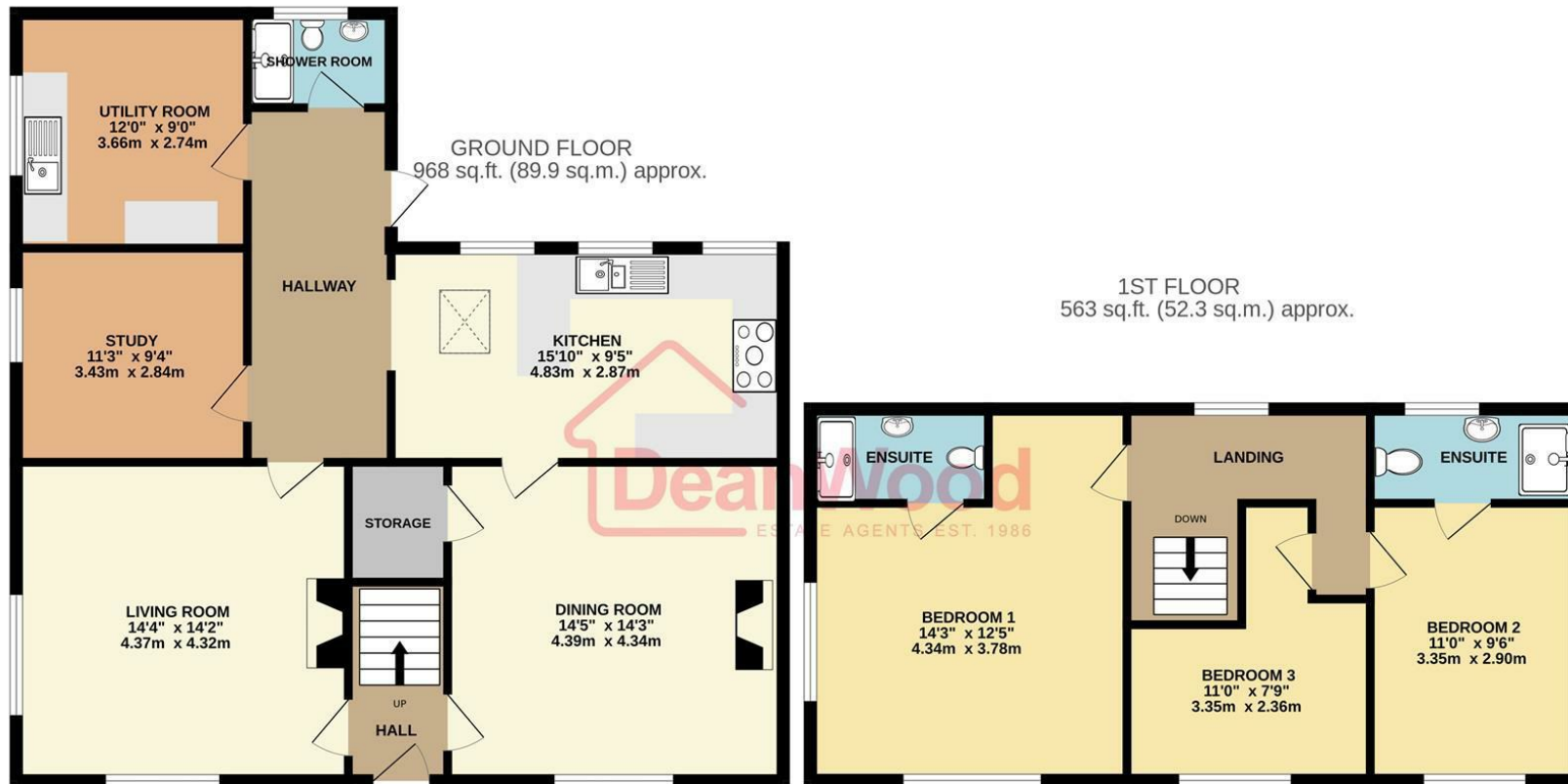






Somersby Shipyard Road, Ramsey, Isle Of Man, IM8 3DN





TOTAL FLOOR AREA : 1531 sq.ft. (142.3 sq.m.) approx.

Not to scale-for identification purposes only
Made with Metropix ©2026



DOUGLAS

37 VICTORIA STREET
DOUGLAS
ISLE OF MAN IM1 2LF

T 01624 620606
F 01624 677363
E info@deanwood.co.im

CASTLETOWN

COMPTON HOUSE
9 CASTLE STREET CASTLETOWN
ISLE OF MAN IM9 1LF

T 01624 825995
F 01624 825996
E castletown@deanwood.co.im

RAMSEY

LEZAYRE HOUSE
87 PARLIAMENT STREET
RAMSEY ISLE OF MAN IM8 1AQ

T 01624 816111
F 01624 816588
E ramsey@deanwood.co.im

These particulars are for information purposes only. They do not constitute or form any contract nor should any statement contained herein be relied upon as a representation of fact. Neither the vendor nor DeanWood Agencies Limited ('the firm'), nor any officer or employee of the firm accept liability or responsibility for any statement contained herein. The vendor does not by these particulars, nor does the firm, nor does any officer or any employee of the firm have any authority to make or give any representation or warranty whatsoever as regards the property or otherwise. It is the sole responsibility of any person interested in the property described in these particulars to make all proper enquiries and searches to verify the description of the property and all other particulars herein.

FOR MORE PROPERTIES VISIT OUR WEBSITE @ deanwood.im