



London Road, TW7

£340,000

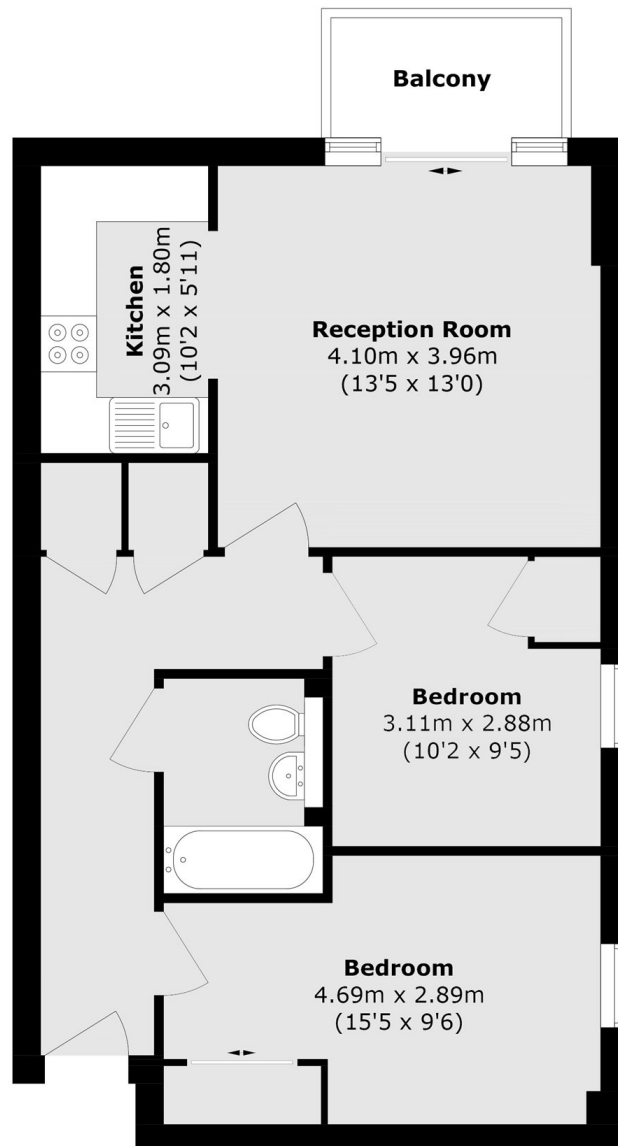
Offered to the market with no onward chain is this immaculately presented two double bedroom first floor apartment located in a popular and sought after development. Offering generous living space throughout, further benefits include a long lease, private balcony with stunning views overlooking the communal gardens and secure underground allocated parking.

Westgate House is a popular and sought after development situated close to excellent transport links including both Isleworth station and Hounslow East (Piccadilly line) station, as well as bus links to neighbouring areas. The property is also a short walk to an array of shops and restaurants.

Features

- Two Double Bedrooms
- Immaculate Condition
- Balcony with Garden Views
- Long Lease
- Secure Allocated Parking
- No Chain

London Road, Isleworth, TW7



Total area (approx.): 60.9 sq. m (655.5 sq. ft)
Balcony area (approx.): 3.1 sq. m (33.3 sq. ft)