



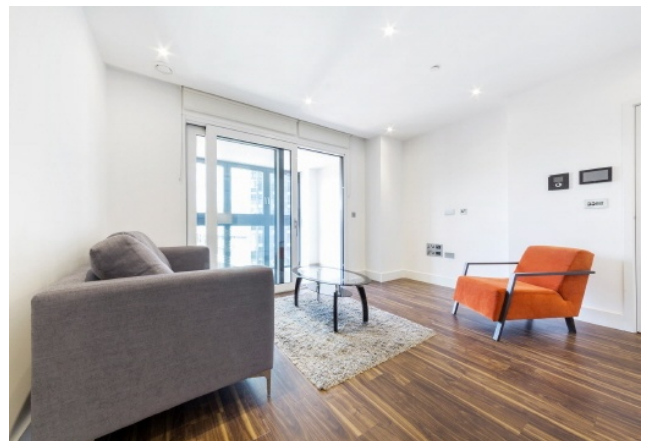
ALDGATE PLACE, E1

£2,700 pcm

Available NOW|||Life Residential, are extremely proud to be offering this One Double Bedroom Apartment to all prospective tenants looking for a high quality fully furnished/ unfurnished apartment.|||The one bedroom apartment is found on the sixth floor of this lovely development. The property in question, will be furnished to the highest quality and is



ABOUT THE HOME







TOTAL AREA: 544 sq ft

Whilst every attempt has been made to ensure the accuracy of the floor plan contained here, measurements of doors, windows, rooms and any other items are approximate and no responsibility is taken for any error, omission, or mis-statement. This plan is for illustrative purposes only and should be used as such by any prospective purchaser. The services, systems and appliances shown have not been tested and no guarantee as to their operability or efficiency can be given

LiFE RESIDENTIAL

71 Drayton Park, London, N5

1BF

Sales: 020 3838 8666

Lettings: 020 7359 4488

Energy Rating: B. We aim to make our particulars both accurate and reliable. However they are not guaranteed; nor do they form part of an offer or contract. If you require clarification on any points then please contact us, especially if you're traveling some distance to view. Please note that appliances and heating systems have not been tested and therefore no warranties can be given as to their good working order.