



Ormonde Road, East Sheen, London, SW14 7BE. Freehold

**RP**  
RANDALL PRICE



A 5/6 bedroom double fronted period residence with driveway parking and south facing garden.

### Features

Period semi detached house	Circa 2,300 sqft
5/6 Bedrooms	South facing garden
2 Reception rooms	Driveway with EV charging point
Large kitchen/breakfast room	Potential to extend stpc

### About the property

This attractive and rarely available double fronted period residence offers superb well appointed lateral accommodation with high ceilings, over 3 floors and benefits from driveway parking and a private south facing garden.

Currently providing 2 reception rooms and a large kitchen breakfast room on the ground floor, there is potential to extend to the rear with a full width extension to create additional family living space, stpc.

Upstairs, to the first floor are 4 bedrooms, a family bathroom and ensuite bathroom, with a spacious converted attic boasting two further bedrooms and shower room with large storage areas.

Ormonde Road is arguably one of the finest and most desirable roads within East Sheen and is within walking distance of both the River Thames and Richmond Park.

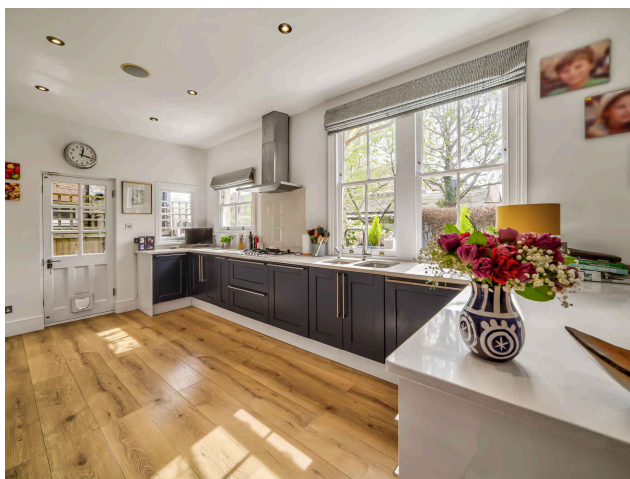
A superb family home that is well-placed to enjoy all that this corner of South West London has to offer.

In addition to Richmond Park, East Sheen has several other green spaces, including Palewell Common and Sheen Common, both of which offer opportunities for outdoor activities and relaxation.

East Sheen has a thriving high street, which is home to a range of shops, cafes, restaurants, and pubs. There are also several supermarkets, including Waitrose and Tesco, making it easy for residents to do their weekly shopping.

The area is known for its excellent schools, both state and private. Some of the top-rated schools in East Sheen include Sheen Mount Primary School, Thomson House Primary school, East Sheen Primary, Tower House and Ibstock Place and St. Paul's School. Transportation links in East Sheen are good, with Mortlake train station, several bus routes serving the area, and Richmond station providing access to the London Underground, Overground, and National Rail services.

Overall, East Sheen is a desirable location for those seeking a suburban lifestyle with easy access to central London and abundant green spaces.



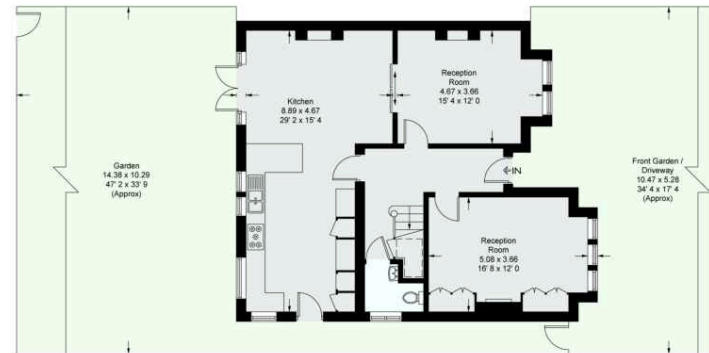
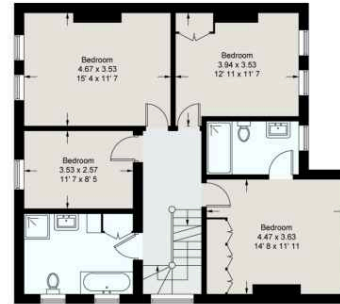


# Ormonde Road

Approximate Gross Internal Area = 2279 sq ft / 211.8 sq m  
 (Excluding Reduced Headroom / Eaves)  
 Reduced Headroom / Eaves = 338 sq ft / 31.4 sq m  
 Total = 2617 sq ft / 243.2 sq m



= Reduced headroom below 1.5m / 5'0"



This plan is not to scale and must be used as layout guidance only. All measurements and areas are approximate and should not be relied upon to provide accurate information. This plan must not be relied upon when making property valuations, design considerations or any other such relevant decisions. We accept no responsibility or liability (whether in contract, tort or otherwise) in relation to any loss whatsoever arising from or in connection with any use of this plan or the adequacy, accuracy or completeness of it or any information within it.

Energy Efficiency Rating		Current	Potential
The more efficient - lower running costs			
70-90	A		
61-69	B		82
52-60	C		
43-51	D	66	
35-42	E		
27-34	F		
19-26	G		
The less efficient - higher running costs			
England & Wales		EU Directive 2002/91/EC	



- 0208 087 3545
- info@randallprice.co.uk
- www.randallprice.co.uk
- Office 108, 20 Mortlake High Street, London, SW14 8JN

Brochure by fourwalls-group.com