

Caraway Walk South Shields NE34 8UG

This beautifully presented home offers stylish and versatile accommodation throughout, perfectly suited to modern family living.

A welcoming entrance hall sets an immediate impression, featuring a glazed composite front door, elegant herringbone flooring and tasteful neutral décor, complemented by a classic column-style radiator. The lounge is a sophisticated yet inviting space, enhanced by herringbone flooring, part-panelled walls and a contemporary colour drench finish, flowing seamlessly into the dining area to create an impressive open-plan layout ideal for both everyday living and entertaining. The dining space enjoys a delightful garden outlook and is further enhanced by feature panelling and bi-fold doors that open directly onto the rear garden, filling the room with natural light.

At the heart of the home is a stunning kitchen/breakfasting area, thoughtfully designed with both style and functionality in mind. A central island, bespoke matt black cabinetry and quartz work surfaces create a striking contemporary aesthetic, while a comprehensive range of integrated appliances ensures a high-spec finish. Two sets of bi-fold doors further enhance the sense of space and provide a superb connection to the garden,

Offers in the region of £335,000

23 Caraway Walk

South Shields NE34 8UG



- FULLY MODERNISED GENEROUS SEMI DETACHED HOME
- TWO BATHROOMS
- DRIVEWAY FOR TWO CARS
- THREE RECEPTION ROOMS
- THREE BEDROOMS
- MUCH SOUGHT AFTER AREA
- KITCHEN BREAKFAST ROOM WITH ISLAND AND BI FOLD DOORS TO THREE SIDES
- WELL MAINTAINED GARDEN
- NEW EPC TO FOLLOW

Entrance Hall

A striking composite front door with an elegant glazed panel welcomes you into a beautifully presented entrance hall, bathed in natural light. The space is enhanced by exquisite herringbone flooring and a sophisticated neutral colour palette, creating a timeless first impression. A stylish column-style radiator adds a touch of classic charm, perfectly blending character with contemporary comfort.

Lounge

A beautifully styled, neutrally decorated lounge showcasing elegant herringbone flooring and striking part-panelled walls. The space embraces a contemporary "colour drench" design, creating a cohesive and sophisticated aesthetic throughout. Seamlessly open plan to the dining area, this inviting room is perfectly suited to both relaxed living and modern entertaining.

Dining Area

Enjoying a wonderful outlook over the garden, this beautifully presented dining area features elegant panelled walls that add depth and character. Impressive bi-fold doors create a seamless connection to the outdoors, flooding the space with natural light. Open plan to the kitchen/breakfasting area, it provides an ideal setting for both everyday living and stylish entertaining.

Kitchen/ Breakfasting Room

A stunning contemporary space designed with both style and functionality in mind, featuring a sleek central island and two sets of bi-fold doors that fully open to create an exceptional indoor-outdoor living experience. The bespoke matt black wall and base units are beautifully contrasted by luxurious quartz work surfaces, delivering a bold yet refined aesthetic.

The impressive island incorporates a sink with an elegant gold mixer tap, generous storage, and integrated appliances including a dishwasher and washer/dryer, alongside a stylish breakfast seating area. Further high-specification features include an induction hob with extractor over, integrated oven and microwave, wine cooler, and full-height fridge and freezer. Recessed spot lighting completes this sophisticated and highly practical space, ideal for modern living and entertaining.

Second Reception / Bedroom

A versatile second reception room, equally suited as a ground floor bedroom, benefitting from an en-suite shower room for added convenience. Finished with elegant herringbone style flooring and a neutral décor, the space is further enhanced by stylish panelled walls, creating a refined and contemporary feel. Ideally positioned for use as a home office, guest suite, or additional living space, it offers excellent flexibility to suit modern lifestyles.

Shower Room

A beautifully appointed shower room featuring a bespoke vanity wash hand basin and WC, complemented by a sleek walk-in shower. The shower is fitted with an elegant overhead waterfall shower head alongside a hand-held attachment, creating a luxurious and spa-like experience. Finished to a high standard throughout, this stylish space combines contemporary design with everyday practicality.

First Floor landing

Bedroom

A well-proportioned double bedroom featuring an attractive feature panelled wall, adding a touch of style and sophistication.

The room offers ample space for a range of furnishings and benefits from a pleasant front-facing aspect, creating a bright and welcoming retreat.

Bedroom

A well-proportioned double bedroom enjoying a pleasant rear-facing aspect, providing a quiet and private outlook. The room offers ample space for a range of furnishings.

Bedroom

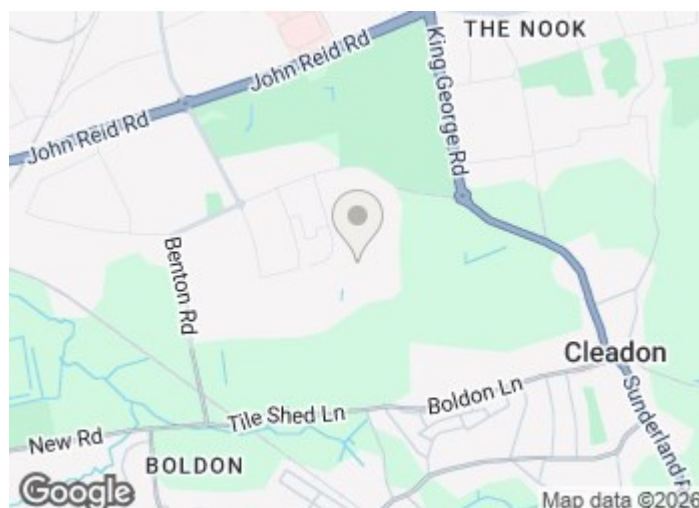
A light and airy front-facing bedroom, benefiting from an abundance of natural light and a pleasant outlook. The room offers a comfortable and versatile space.

Family Bathroom

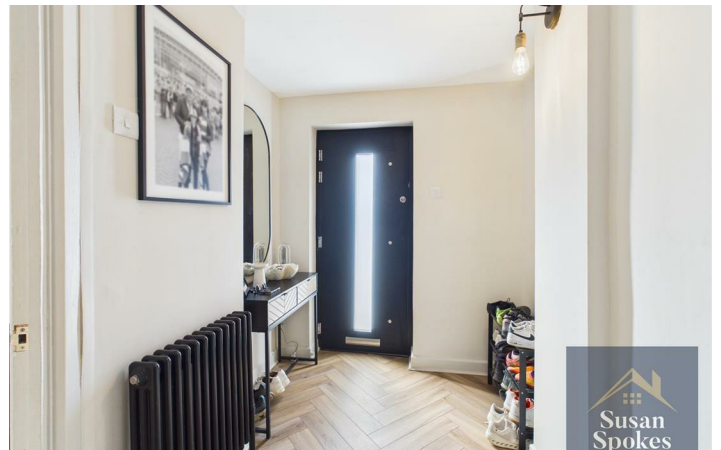
A stylish and contemporary bathroom fitted with a modern three-piece suite, complemented by a luxurious waterfall shower over the bath. Finished with elegant brushed gold fittings, the space exudes a refined, high-end feel. A heated towel radiator adds both comfort and practicality, completing this beautifully appointed room.

External

A wonderful home enjoying a pleasant outlook, with a private driveway providing off-street parking for two vehicles. To the rear, an enclosed and well-maintained garden features a spacious patio area, ideal for outdoor dining and entertaining, alongside a neatly laid lawn bordered by mature shrubs and trees, offering both privacy and charm. A delightful summer house, complete with electrical supply and lighting, provides a versatile additional space for relaxation, hobbies, or home working.



Directions



Floor Plan



These particulars, whilst believed to be accurate are set out as a general outline only for guidance and do not constitute any part of an offer or contract. Intending purchasers should not rely on them as statements of representation of fact, but must satisfy themselves by inspection or otherwise as to their accuracy. No person in this firm's employment has the authority to make or give any representation or warranty in respect of the property.

179a Sunderland Road, South Shields, Tyne and Wear, NE34 6AD
Tel: 0191 541 22 08 Email: info@susanspokes.co.uk <https://www.susanspokes.co.uk>

