

IMPORTANT NOTICE Wilkie May & Tuckwood for the vendors of the property, whose agents they are, give notice that the particulars are intended to give a fair and substantially correct overall description for the guidance of intending purchasers and do not constitute part of an offer or contract. Prospective purchasers and lessees ought to seek their own professional advice. 2. All descriptions, dimensions, areas, references to condition and necessary permissions for use and occupation and other details are given in good faith, and are believed to be correct, but any intending purchasers should not rely on them as statements or representations of fact but must satisfy themselves by inspection or otherwise as to the correctness of each of them. 3. No person in the employment of Wilkie May & Tuckwood has any authority to make or give any representations or warranties. 4. No responsibility can be accepted for any expenses incurred by whatever in relation to this property on behalf of Wilkie May & Tuckwood, nor enter into any contract on behalf of the vendor. All measurements are approximate and have been taken by Nichecom. While we endeavour to make our sales particular accurate and reliable, if there is any point which is of particular importance to you, please contact the office and we will be pleased to check the information with you. We routinely refer potential sellers and purchasers to a selection of recommended local conveyancing firms. It is their decision whether to use those services. In making that decision, it should be known that we receive a payment benefit of not more than £150+VAT. Once an offer is accepted by our client, an Administration Fee of £20+VAT (£24) per buyer will be required in order to process the necessary checks relating to our compliance under Anti-Money Laundering legislation. This is a non-refundable payment and cannot be returned should purchase cease to continue. It can be paid via a card machine, or via BACS transfer. Code of Practice for Residential Estate Agents: Effective from 1 August 2011. 8. Financial Evaluation. At the time that an offer has been made and is being considered by the seller, you must take reasonable steps to find out from the prospective buyer the source and availability of his funds for buying the property and pass this information to the seller. Such information will include whether the prospective buyer needs to sell a property, requires a mortgage, claims to be a cash buyer or any combination of these. Such relevant information that is available should be included in the Memorandum of Sale having regard to the provisions of the Data Protection Act. These reasonable steps must continue after acceptance of the offer until exchange of contracts (in Scotland, conclusion of missives) and must include regular monitoring of the prospective buyer's progress in achieving the funds required, and reporting such progress to the seller. The agent has not tested any apparatus, equipment, fixtures and fittings or services and so cannot verify that they are in working order or fit for their purpose. A Buyer is advised to obtain verification from their solicitor or surveyor. References to the Tenure of the Property are based on information supplied by the Seller. The agent has not had sight of the title documents. A Buyer is advised to obtain verification from their solicitor.

Agents Note: Planning permission has been granted for residential development of 45 retirement dwellings in the field to the rear. Planning Application number: 38/18/0108

Tenure: The property is offered for sale freehold by private treaty with vacant possession on completion.
Services: Mains water with meter, mains electricity, mains drainage, gas fired central heating.
Local Authority: Somerset Council, County Hall, The Crescent, Taunton, Somerset, TA1 4DY
Local Authority: Somerset
Property Location: //faul/speeds.taped
Council Tax Band: E
Broadband Availability: Ultrafast with up to 1800 Mbps download speed and 220 Mbps upload speed. Check: <https://www.ofcom.org.uk/mobile-coverage-checker>
Flood Risk: Rivers & Sea—very low, Surface water—very low.



8 Feversham Way,
 Taunton, TA2 8SD
 £365,000

4 2 2 D EPC

Wilkie May & Tuckwood

Floor Plan

Feversham Way, Taunton, TA2

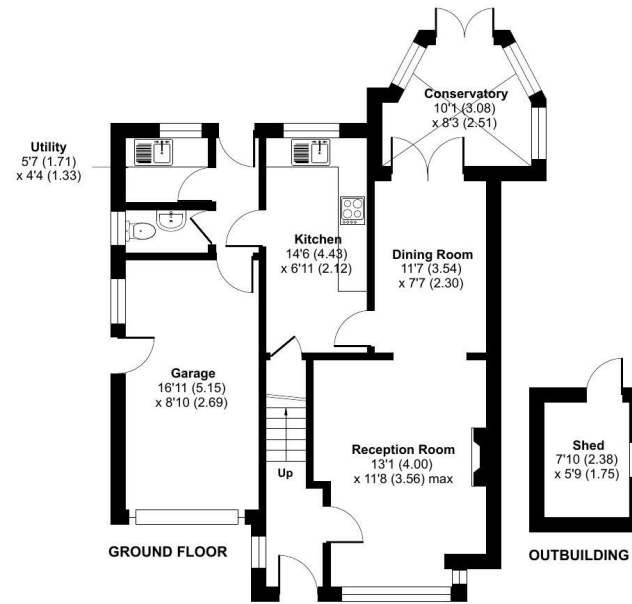
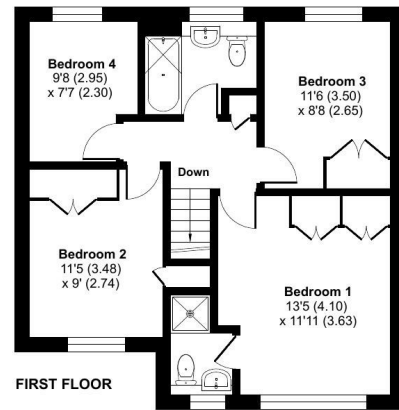
Approximate Area = 1156 sq ft / 107.3 sq m

Garage = 152 sq ft / 14.1 sq m

Outbuilding = 46 sq ft / 4.2 sq m

Total = 1354 sq ft / 125.6 sq m

For identification only - Not to scale



Floor plan produced in accordance with RICS Property Measurement 2nd Edition, incorporating International Property Measurement Standards (IPMS2 Residential). © nrichcom 2026. Produced for JREA Ltd TA Wilkie May & Tuckwood, Taunton. REF: 1435494

WM&T

Description

- Four Bedrooms
- Detached House
- Cul-De-Sac Position
- Mains Gas Fired Central Heating
- uPVC Double Glazing
- Conservatory
- Garage & Off Road Parking
- Private & Enclosed Rear Garden

A well presented, four bedroom detached family home, situated in a quiet cul-de-sac position in Feversham Way. The property benefits from uPVC double glazing throughout and a mains gas fired central heating system. The accommodation is light and spacious and enjoys a conservatory extension overlooking the rear garden. Externally, there is an enclosed rear garden, a single garage and off-road parking for two vehicles.



The accommodation is arranged over two floors and comprises in brief; a front door leading into an entrance hallway with stairs rising to the first floor and access to the living room. The living room enjoys a front aspect window and features a gas fire with surround, with an archway opening into the dining area. From here, double doors lead into the conservatory with an electric heater and French doors opening onto the rear garden. The kitchen is fitted with a range of matching wall and base units with work surfaces over, an integrated electric oven with hob and extractor above, stainless steel sink, space for an under-counter fridge and an under stairs storage cupboard. A separate utility room provides additional storage with space and plumbing for a washing machine and a sink. There is also a ground floor cloakroom

with low level WC and wash hand basin, along with internal access into the garage. On the first floor are four bedrooms, three with built-in wardrobes. The principal bedroom benefits from an en-suite shower room comprising shower cubicle, low level WC and wash hand basin. The family bathroom is fitted with a panelled bath with shower over, low level WC and wash hand basin. Externally, the rear garden is mainly laid to lawn with a patio area and well stocked flower and shrub borders, along with an outside tap, lighting and side access. To the front, there is off road parking for two vehicles and a single garage with power, lighting and an up-and-over door.

WM&T