



17, Pimlico Court, Hertford
SG13 8EB
Price Guide £270,000



stevenoates.com



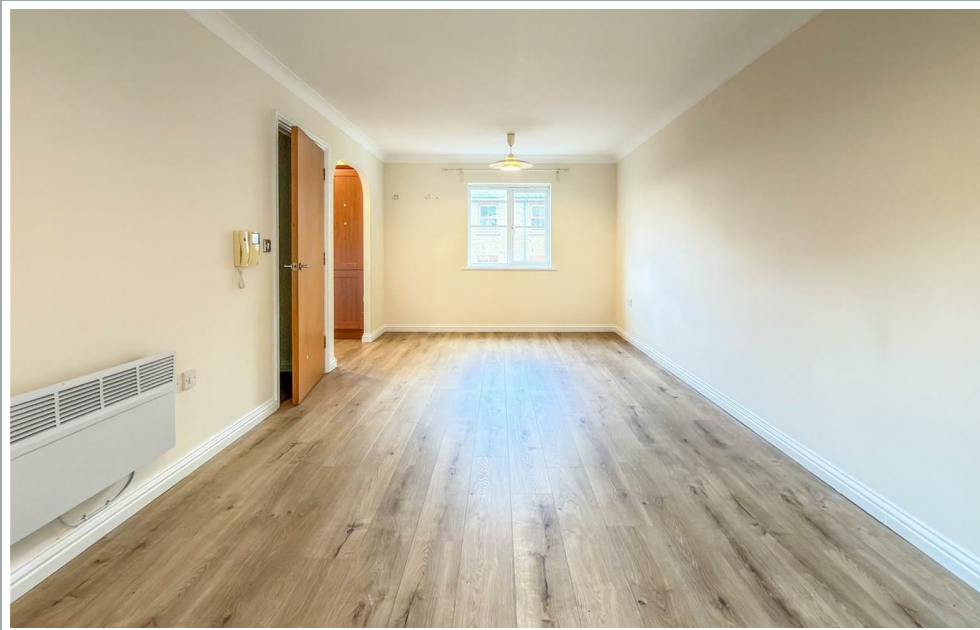
17 Pimlico Court, Pegs Lane, Hertford, Hertfordshire, SG13 8EB

**** 200 Year Plus Lease with Peppercorn Ground Rent **** Steven Oates are delighted to offer this two bedroom, first floor apartment situated conveniently for Hertford Town's multiple facilities and transport links. The apartment benefits from two double bedrooms, En-suite to principal bedroom, 21ft lounge leading to kitchen, secure underground allocated parking space, and secure bike storage, communal gardens, additional visitor parking telephone entry system and Juliet balcony. Offer on a chain free basis.

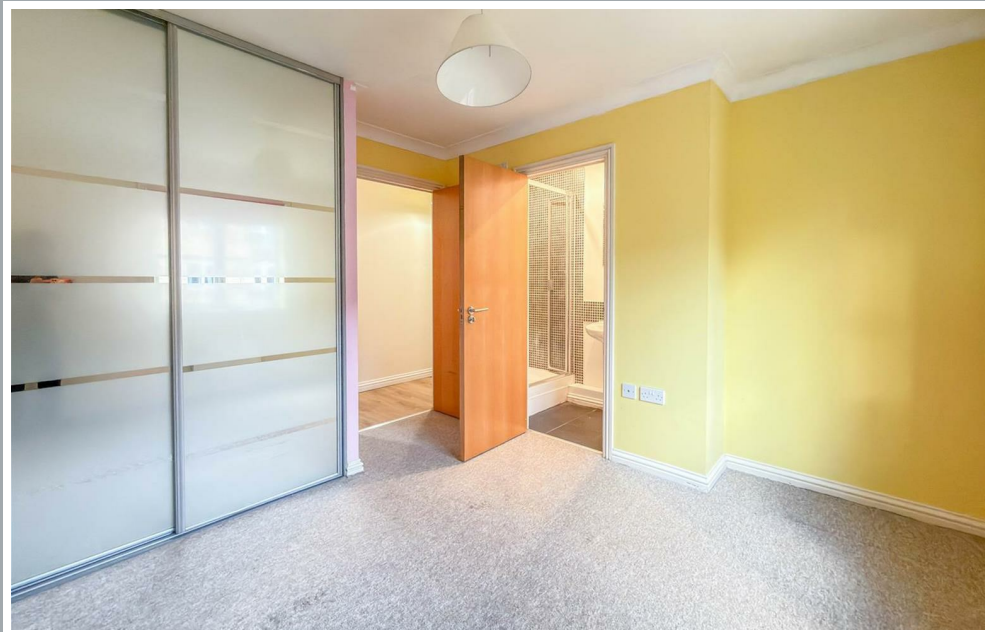
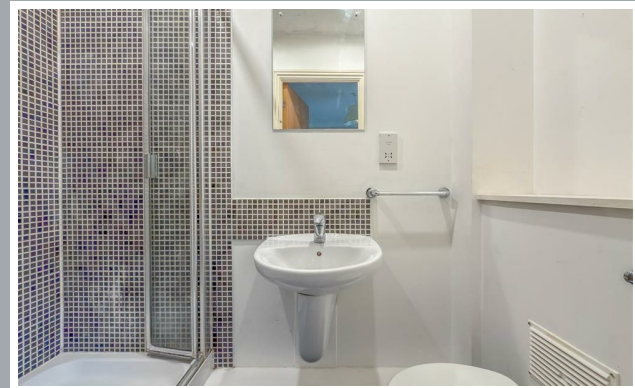
Situated on the outskirts of the town centre within this sought after development, only a short walk through the Hertford castle grounds to Hertford North and East British Rail Stations, also close to shops and leisure facilities.



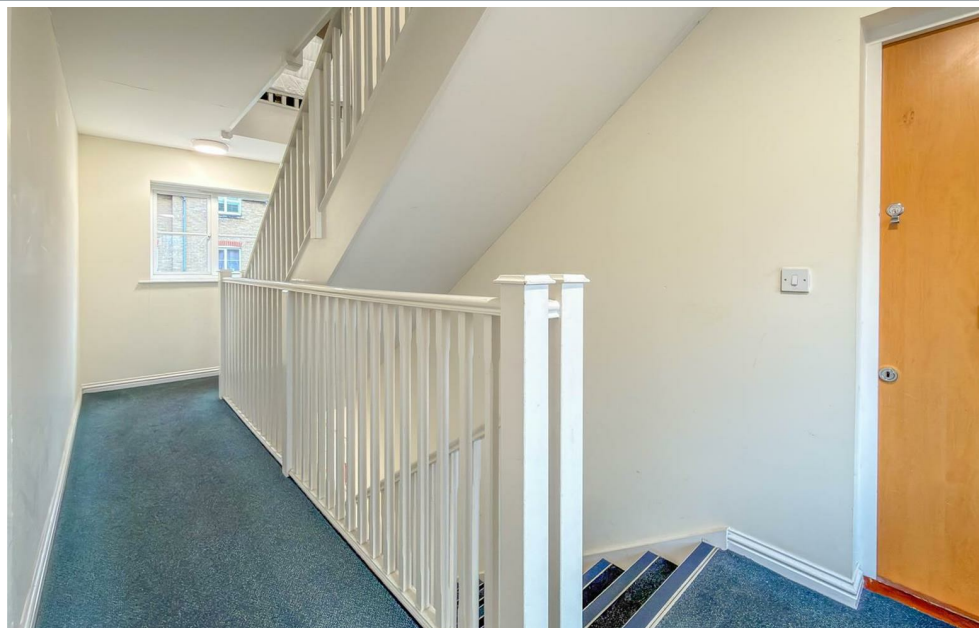
70 Fore Street, Hertford, Hertfordshire, SG14 1BY



70 Fore Street, Hertford, Hertfordshire, SG14 1BY

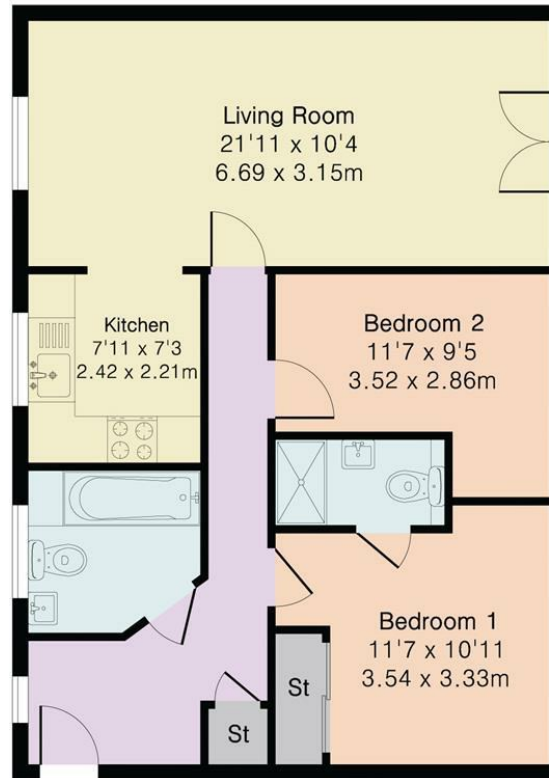


70 Fore Street, Hertford, Hertfordshire, SG14 1BY



70 Fore Street, Hertford, Hertfordshire, SG14 1BY

Approximate Gross Internal Area 687 sq ft - 64 sq m



First Floor

These particulars, whilst believed to be accurate are set out as a general outline only for guidance and do not constitute any part of an offer or contract. Intending purchasers should not rely on them as statements of representation of fact, but must satisfy themselves by inspection or otherwise as to their accuracy. No person in this firm's employment has the authority to make or give any representation or warranty in respect of the property.



stevenoates.com