



Guide Price
£325,000

Freehold

2x  1x  1x 

**Watling Street,
Dartford, Kent, DA2**

OVER 60?

Secure this property
for up to **59% less!**

Wards
Helping you move forwards



Main features

- **Lovely terrace house with garage**
- **Handy downstairs cloakroom**
- **Separate kitchen and lounge**
- **Rear garden**
- **Situated near local shops and amenities**

Accommodation

GROUND FLOOR

Hallway
 Lounge: 13'3 x 13'1 (4.04m x 3.99m)
 Kitchen: 9'6 x 5'8 (2.90m x 1.73m)
 Cloakroom: 6'4 x 2'7 (1.93m x 0.79m)

FIRST FLOOR

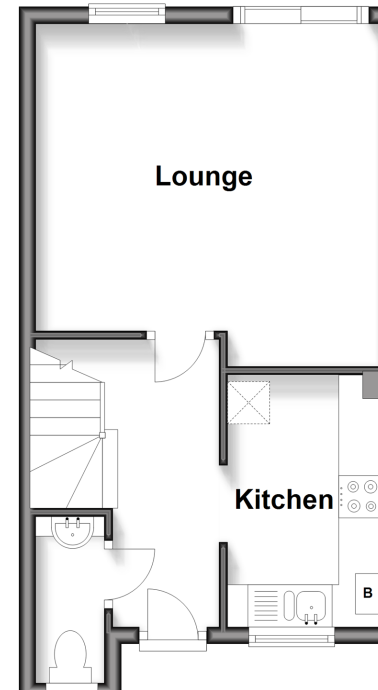
Landing
 Bedroom 1: 11'2 x 8'8 (3.41m x 2.64m)
 Bedroom 2: 11'1 x 7'4 (3.38m x 2.24m)
 Family Bathroom: 6'5 x 6'1 (1.96m x 1.86m)

OUTSIDE

Rear Garden
 Garage

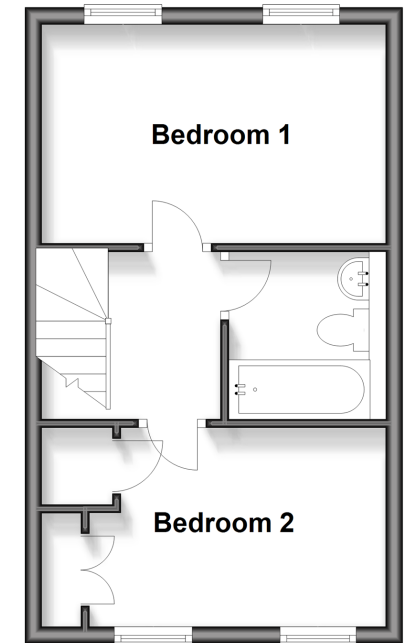
Ground Floor

Approx. 29.7 sq. metres (320.1 sq. feet)



First Floor

Approx. 29.1 sq. metres (313.7 sq. feet)



Call Dartford - 01322 288211 ■ wardsofkent.co.uk

■ Legal advice should be taken to verify fixtures/fittings, planning, alterations and/or lease details
 ■ Through a Homewise Home For Life Plan people aged 60+ can secure this property for up to 59% less, by purchasing a Lifetime Lease

■ Appliances & services are untested, dimensions are approximate and floor plans are not to scale



18175913/20260311/YD/YD