



YUKON ROAD, SW12

£2,400 per month

A spacious two double bedroom garden flat situated in the heart of Balham.

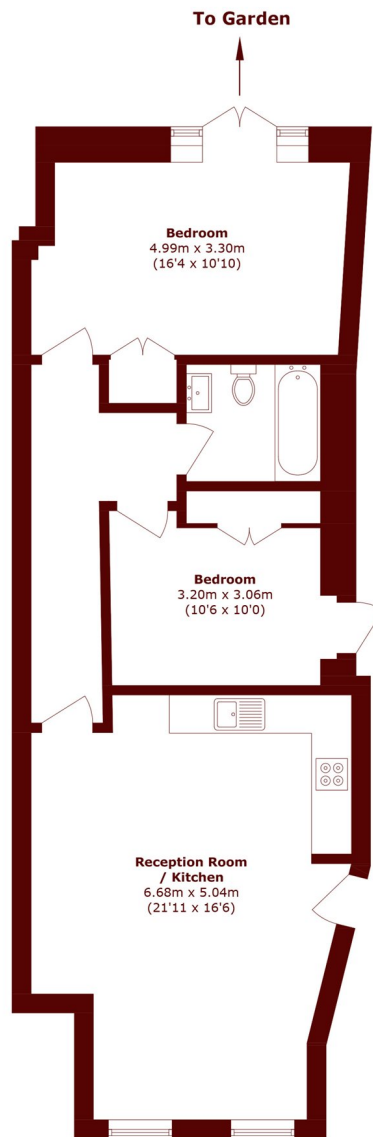
Two bedrooms
Private garden
Wooden floors

Open plan
Modern
Energy rating: c

@marshandparsons
marshandparsons.co.uk

MARSH &
PARSONS

STEP INSIDE YUKON ROAD



Total area (approx.): 71.3 sq. m (767.4 sq. ft)

Balham & Clapham South
020 8772 9200

Energy Rating: C We aim to make our particulars both accurate and reliable. However, they are not guaranteed; nor do they form part of an offer or contract. If you require clarification on any points then please contact us, especially if you're traveling some distance to view. Please note that appliances and heating systems have not been tested and therefore no warranties can be given as to their good working order

**MARSH &
PARSONS**