

TwentyFive, Nutford Place W1H

£5,200 per month



TwentyFive, Nutford Place W1H

£5,200 per month Furnished

Modern two bedroom apartment in TwentyFive available.

This fourth floor apartment covers 845 sq ft and comprises a reception and open plan kitchen fitted with Miele integrated appliances and breakfast bar with waterfall edge, primary bedroom with floor to ceiling built in wardrobes and ensuite bathroom with walk in shower, second double bedroom and a family bathroom. The apartment benefits from underfloor heating, comfort cooling and Juliet balconies to each room.

TwentyFive offers Concierge and a fully equipped residents gym.

Council Tax band: F

Tenure: Leasehold

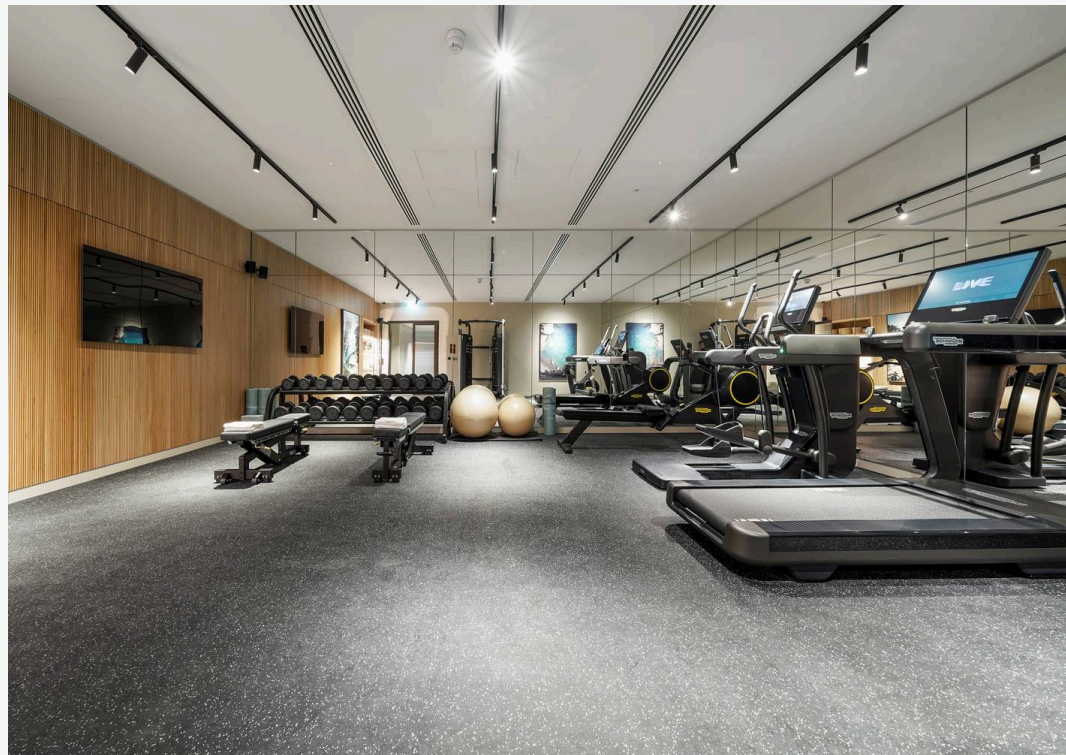
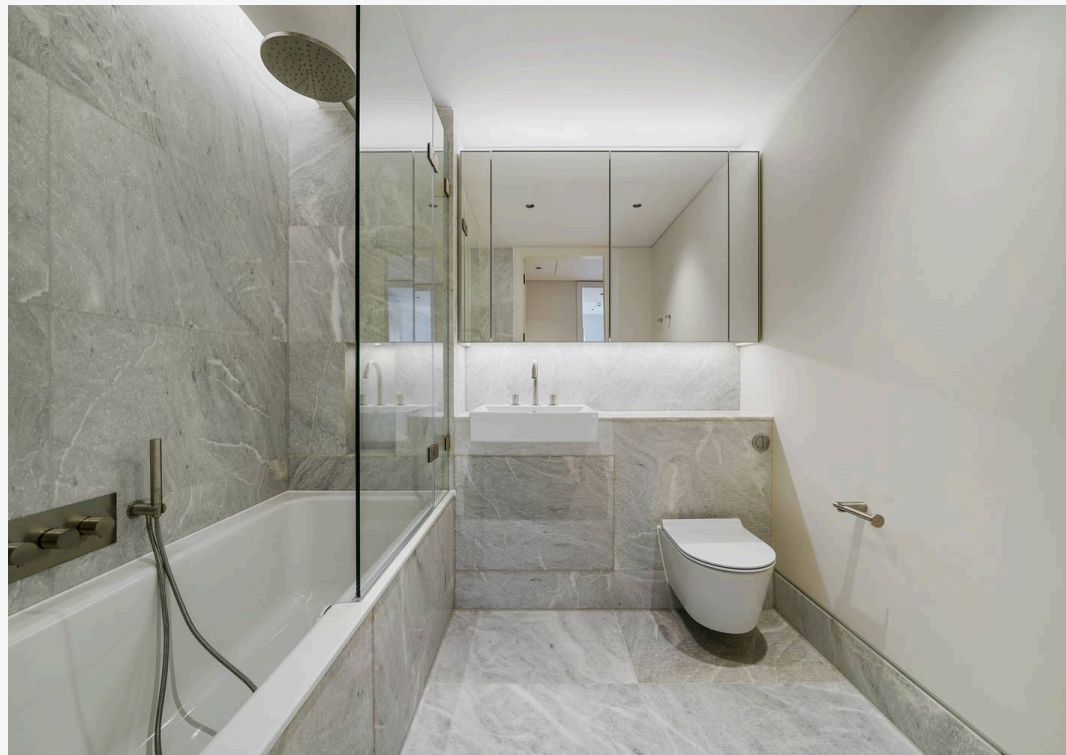
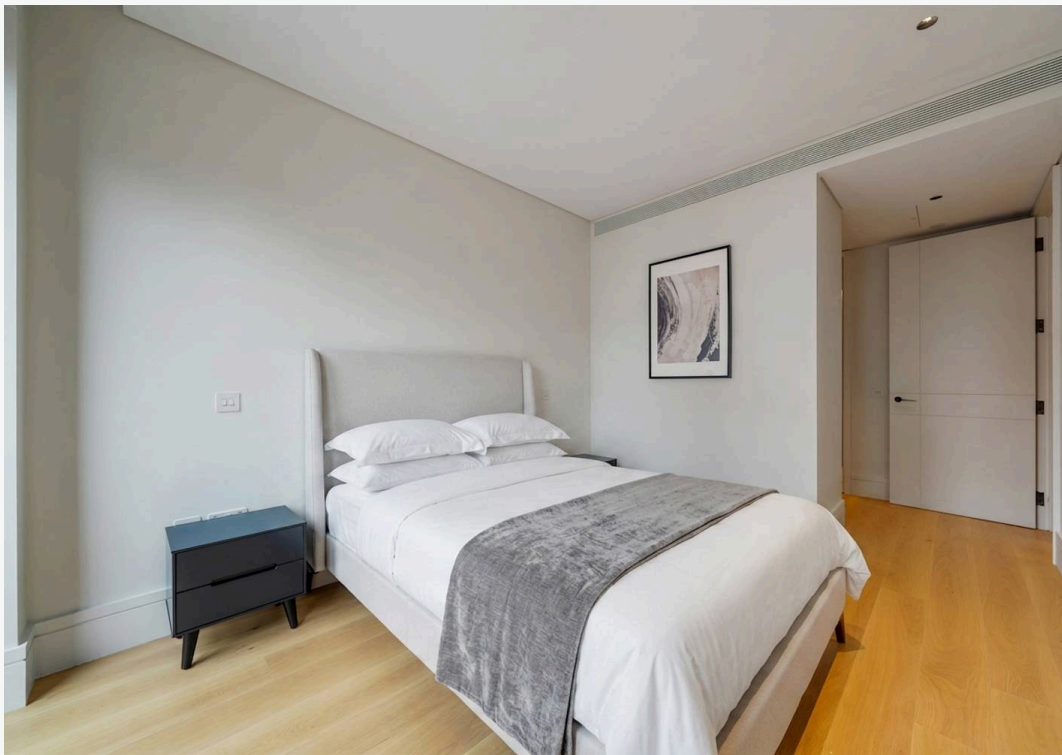
EPC Energy Efficiency Rating: B

EPC Environmental Impact Rating: B

- Comfort Cooling
- Concierge
- Gym

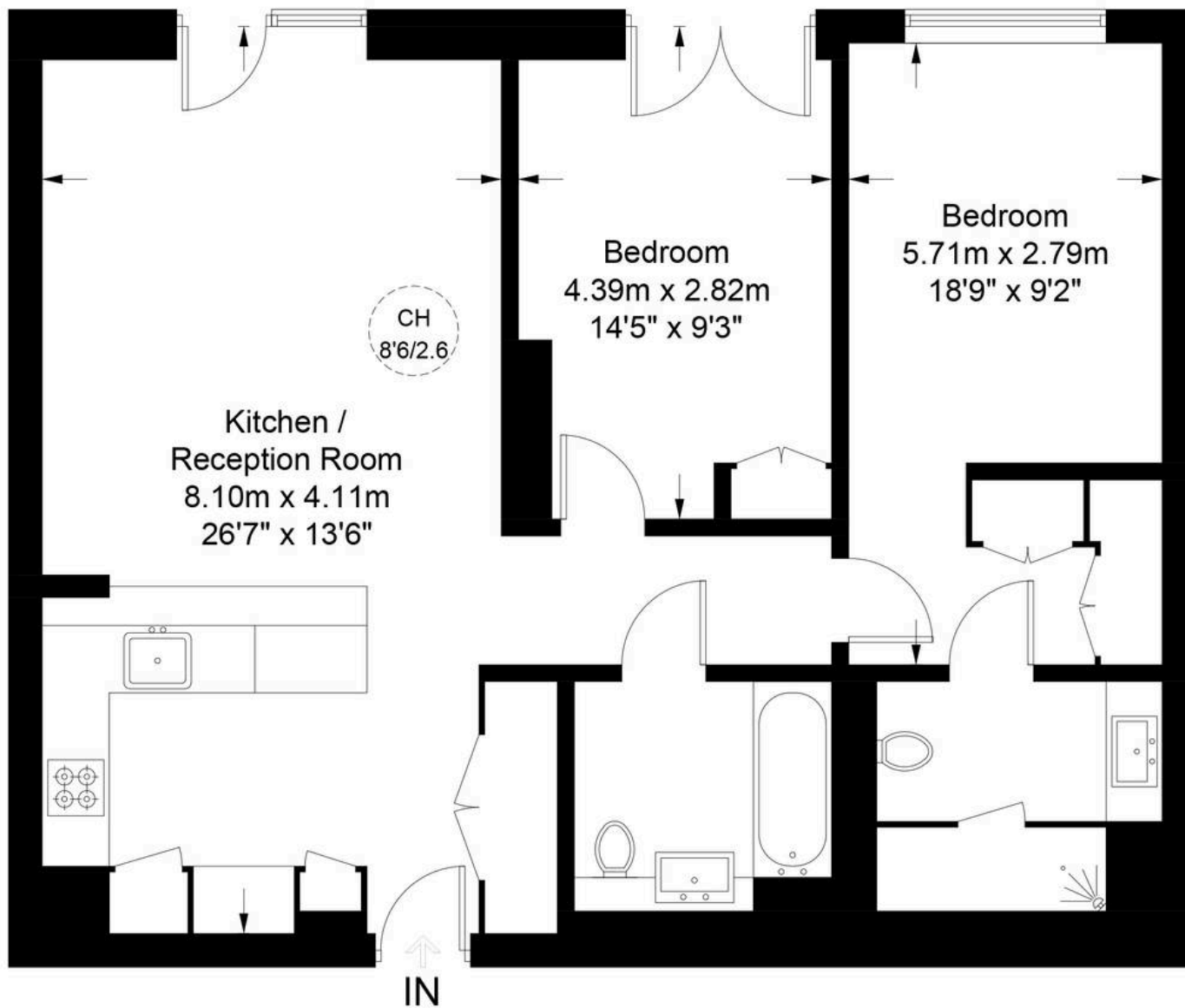








Approximate Gross Internal Area = 845 sq ft / 78.5 sq m



**Certified
Property
Measurer**

This plan is for layout guidance only. Not drawn to scale unless stated. Windows and door openings are approximate. Whilst every care is taken in the preparation of this plan, please check all dimensions, shapes and compass bearings before making any decisions reliant upon them. (ID889096)

LREO

Contact Agent

Michael Sevilla

+44 (0) 7763 694 543

michael@lreo.co.uk

+44 (0) 20 3348 8000

lreo.co.uk