

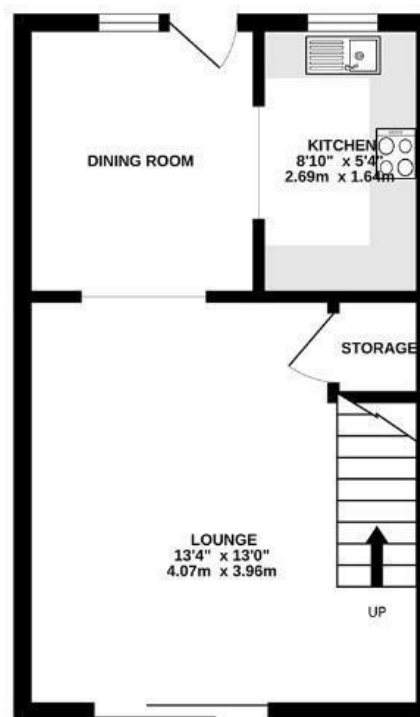
Epsom Close

DOWNEND

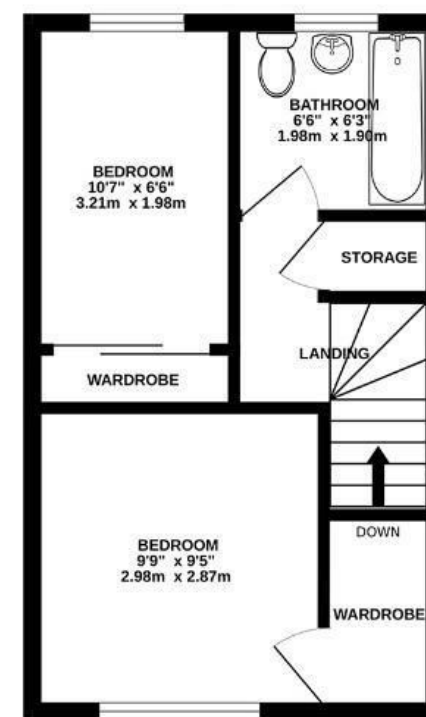
APPROXIMATE FLOOR AREA
53.6 SQM / 577 SQFT



GROUND FLOOR



FIRST FLOOR



Boardwalk

Epsom Close

DOWNEND, BRISTOL



£300,000



2 Bedrooms



BS16 6ST



1 Bathrooms

"This has been a comfortable and easy going home to own, with bright, practical spaces and a garden that offers a lovely spot to unwind. It's been particularly well suited as a long-term rental, with a tenant happily living here for the past 14 years, which speaks to how enjoyable and straightforward it is day to day. The location works brilliantly, with quick access to the Ring Road and the Bristol to Bath Cycle Track, making it ideal for commuting and getting outdoors. Overall, it's a great first home in a well-connected and friendly area."

